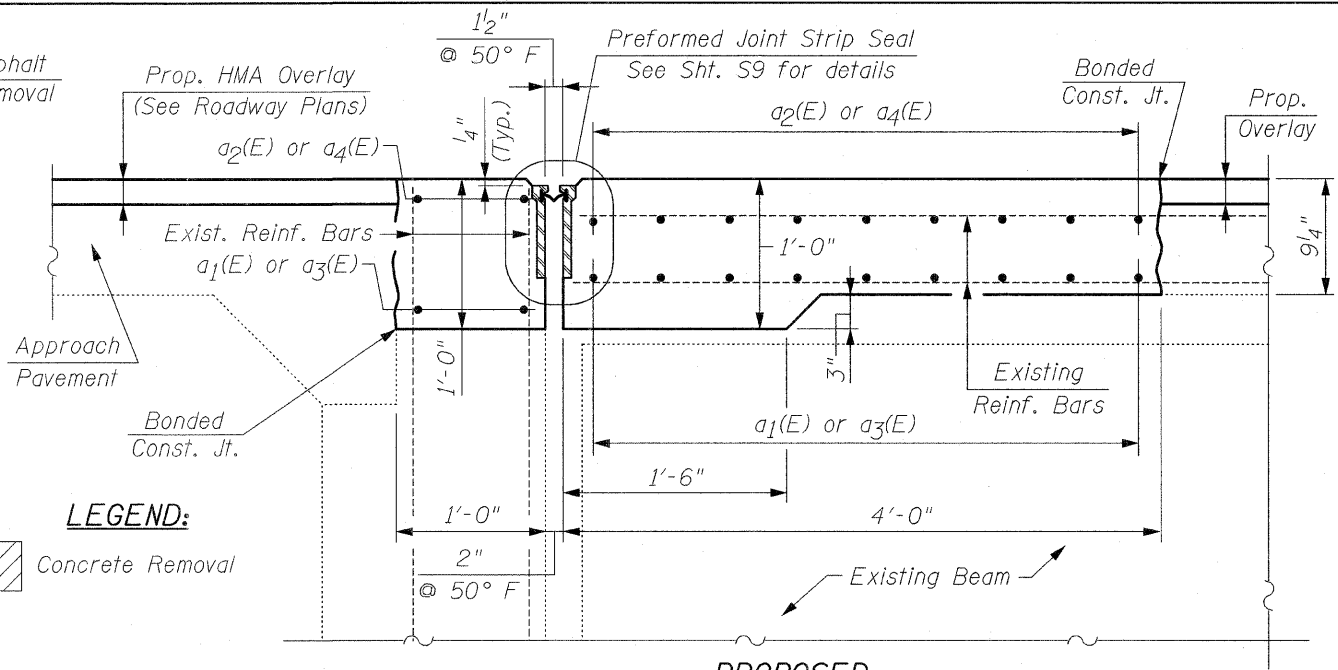


EXISTING
SECTION A-A

NORTH ABUTMENT
(South Abutment similar by 180° rotation)



PROPOSED
SECTION A-A

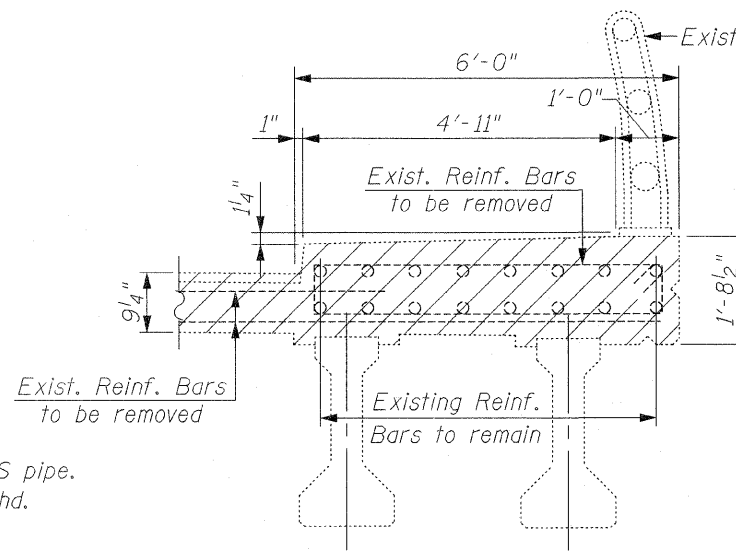
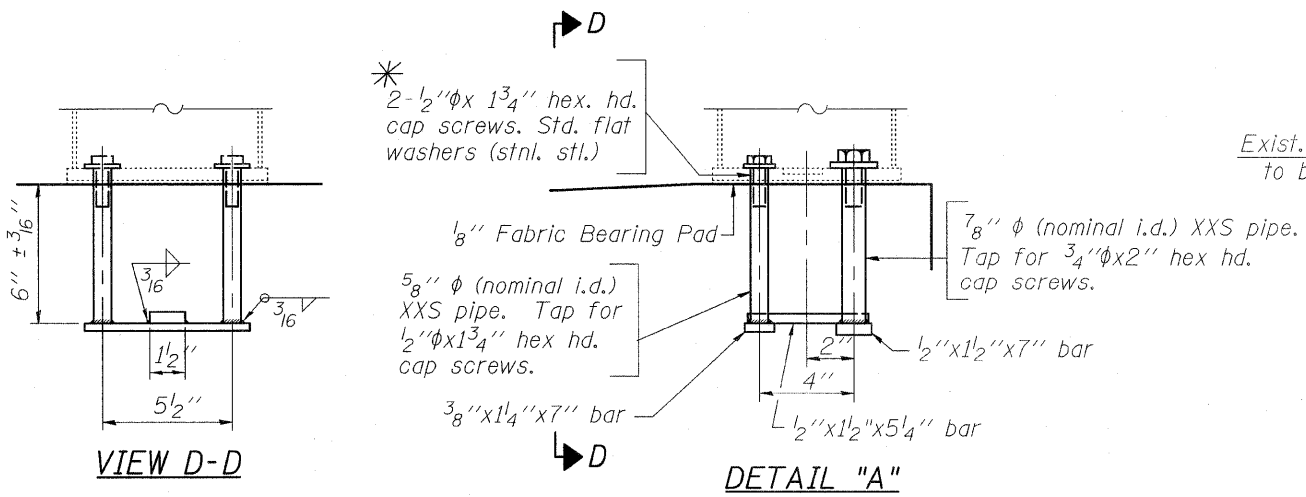
NORTH ABUTMENT
(South Abutment similar by 180° rotation)

NOTE:
For Bar Splicer Assembly details, see Sht. S8

NOTE:
Dimensions are based on a Rolled Rail Strip Seal Joint. If the Contractor elects to use the Welded Rail Strip Seal Joint, Deck dimensions may require adjustments to match the details on Sht. S9

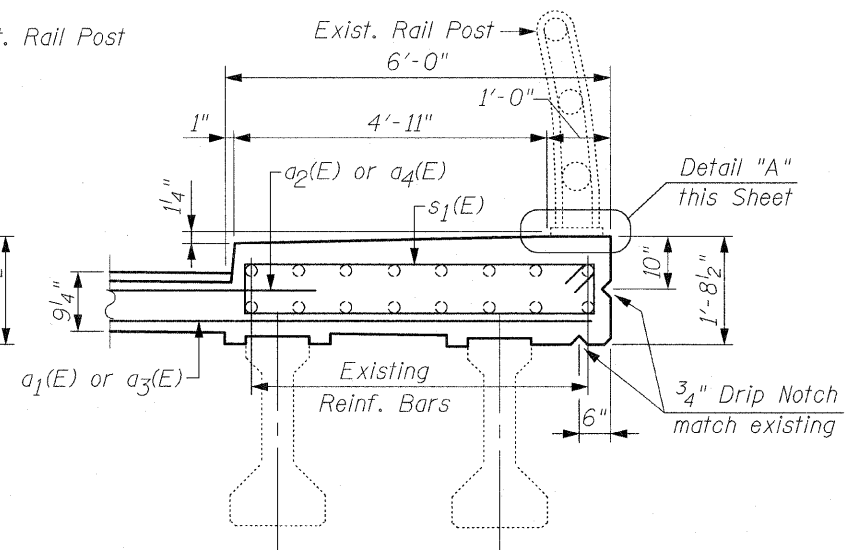
NOTES:
Remove and store rails in the removal area, prior to Concrete removal. Remove and store Rail Post that may be in the Concrete removal area. Reattach Rail Post as shown in Detail "A" and View D-D, the Contractor must verify locations & sizes of existing holes prior to ordering XXS pipes, bars, cap screws & Std. flat washers. Reinstall Rails after Concrete Superstructure is completed. Cost included with Concrete Superstructure.

*
In lieu of the cast-in-place anchor device shown, the Contractor has the option of drilling and setting stainless steel anchor rods of the same diameter and grade as the specified cap screws according to Article 509.06 of the Standard Specifications. Embedment shall be according to the manufacturer's specifications. Cost included with Concrete Superstructure.



EXISTING
SECTION C-C
AT WEST SIDEWALK

(Looking South)
(East Sidewalk similar by 180° rotation)



PROPOSED
SECTION C-C
AT WEST SIDEWALK

(Looking South)
(East Sidewalk similar by 180° rotation)