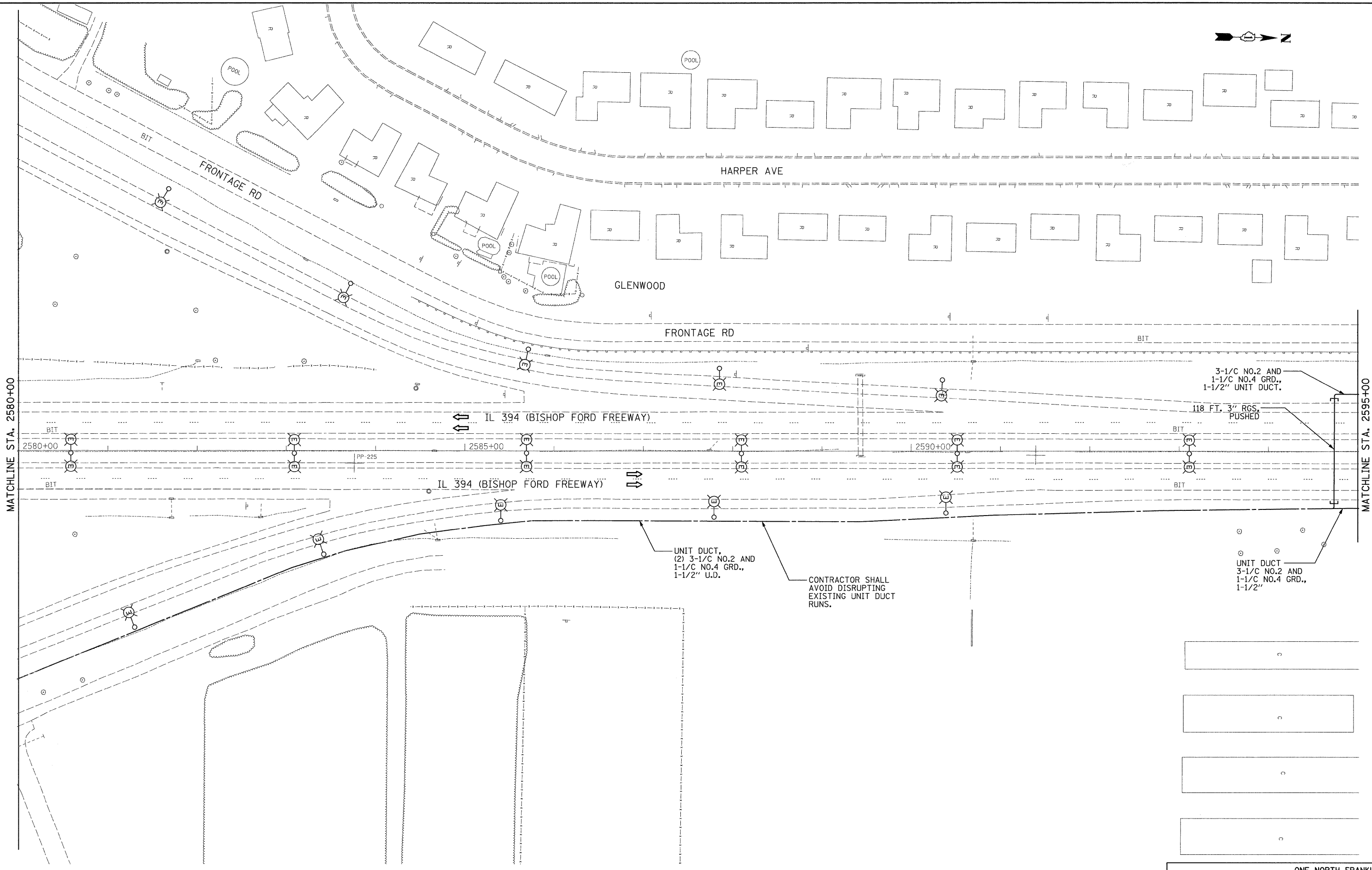


3/5/2009

P:\\_2009\C93620\CADD\Sheets\Lighting\Proposed\_Sheet\_03.dgn



MATCHLINE STA. 2580+00

MATCHLINE STA. 2595+00

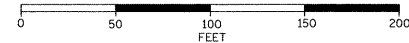
3-1/C NO.2 AND  
1-1/C NO.4 GRD.,  
1-1/2" UNIT DUCT.

118 FT. 3" RGS,  
PUSHED

UNIT DUCT,  
(2) 3-1/C NO.2 AND  
1-1/C NO.4 GRD.,  
1-1/2" U.D.

CONTRACTOR SHALL  
AVOID DISRUPTING  
EXISTING UNIT DUCT  
RUNS.

UNIT DUCT  
3-1/C NO.2 AND  
1-1/C NO.4 GRD.,  
1-1/2"



FILE NAME =	USER NAME = default	DESIGNED - HS	REVISED -
P:\_2009\C93620\CADD\Sheets\Lighting\Proposed_Sheet_03.dgn		DRAWN - MJO/HS	REVISED -
	PLOT SCALE = *SCALE*	CHECKED - CDS	REVISED -
	PLOT DATE = 3/5/2009	DATE - 3/5/2009	REVISED -

**STATE OF ILLINOIS  
DEPARTMENT OF TRANSPORTATION**

**PROPOSED LIGHTING PLAN**

SCALE: 1"=50' SHEET NO. OF SHEETS STA. 2580+00 TO STA. 2595+00

<b>JACOBS</b>		ONE NORTH FRANKLIN CHICAGO IL, 60606 312-251-3000		
F.A.P. RTE.	SECTION	COUNTY	TOTAL SHEETS	SHEET NO.
332	2008-081 L	COOK	18	5
FED. ROAD DIST. NO.		ILLINOIS FED. AID PROJECT		
		CONTRACT NO. 60F83		