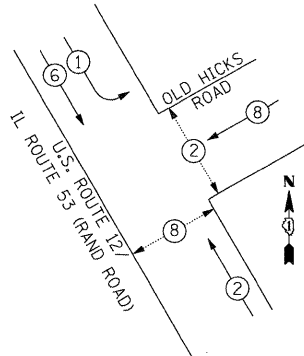


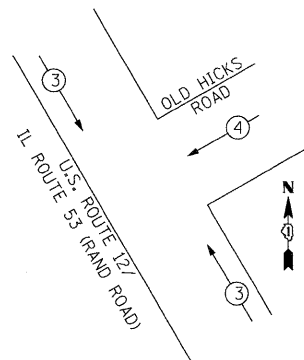
1/27/2009 P:\2009\200912720\CAD\Drawings\02_TempCablePlan_RandOldHicks.dgn

TEMPORARY CONTROLLER SEQUENCE



- LEGEND**
- ⊕ DUAL ENTRY PHASE
 - ⊕ SINGLE ENTRY PHASE
 - OL OVERLAP
 - ⊕ PEDESTRIAN PHASE
 - # NUMBER REFERS TO ASSOCIATED PHASE

TEMPORARY PHASE DESIGNATION DIAGRAM
EMERGENCY VEHICLE PREEMPTION SEQUENCE



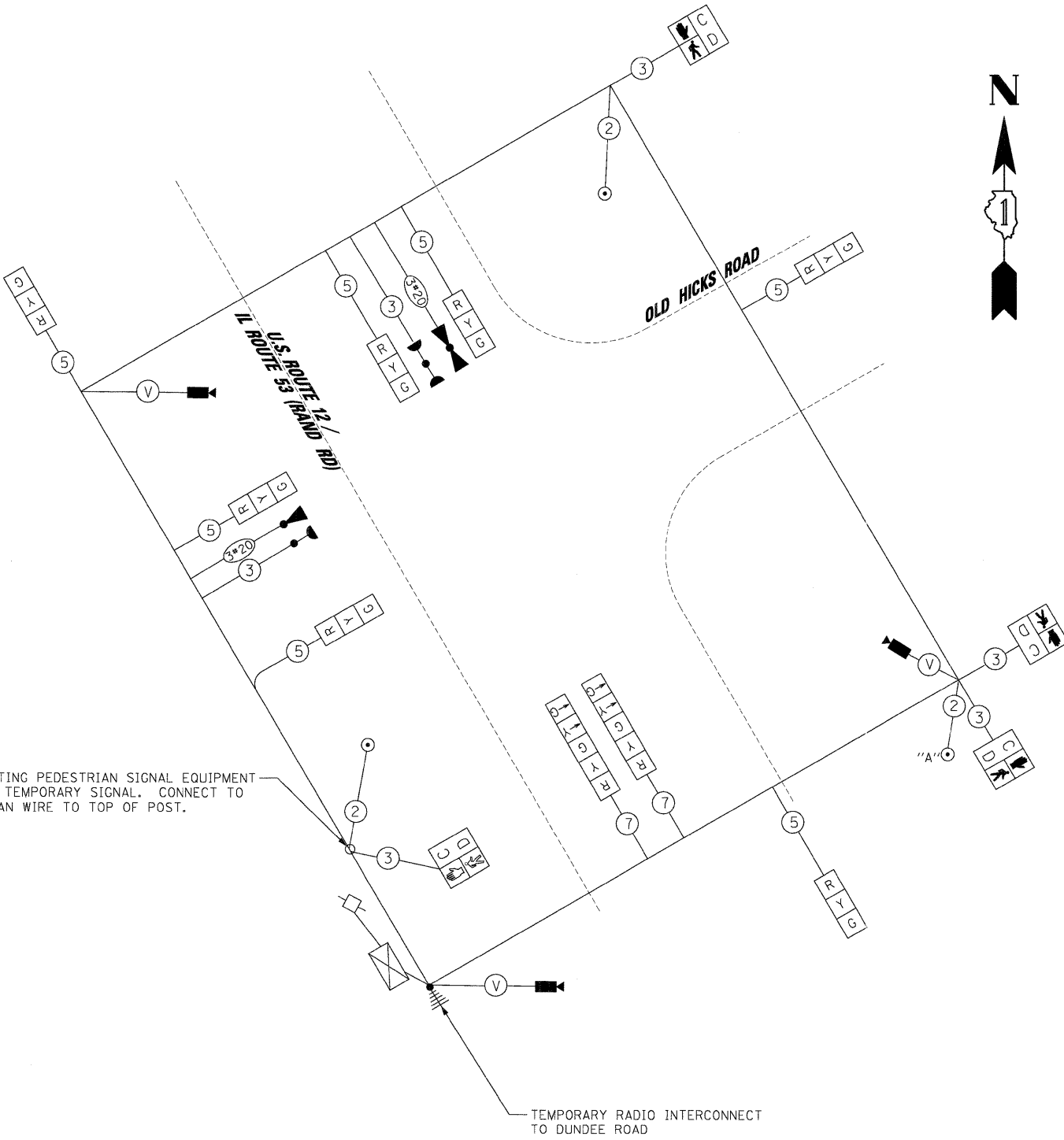
PROPOSED EMERGENCY VEHICLE PREEMPTORS		
EMERGENCY VEHICLE PREEMPTOR	3	4
MOVEMENT	↔	↙

RESTORATION OF WORK AREA, RESTORATION OF THE TRAFFIC SIGNAL WORK AREA SHALL BE INCIDENTAL TO THE RELATED PAY ITEM SUCH AS FOUNDATION, CONDUIT, HANDHOLE, TRENCH AND BACKFILL, ETC., AND NO EXTRA COMPENSATION SHALL BE ALLOWED. ALL ROADWAY SURFACES SUCH AS SHOULDERS, MEDIANS, SIDEWALKS, PAVEMENT, ETC. SHALL BE REPLACED IN KIND. ALL DAMAGE TO MOWED LAWNS SHALL BE REPLACED WITH AN APPROVED SOD, AND ALL DAMAGE TO UNMOWED FIELDS SHALL BE SEEDED IN ACCORDANCE WITH STANDARD SPECIFICATIONS 252 AND 250 RESPECTIVELY.

NOTE:
THE TRAFFIC SIGNAL CONTROLLER EQUIPMENT FOR THIS PROJECT SHALL BE "ECONOLITE" TO MATCH THE EXISTING ADJACENT SYSTEM.

TEMPORARY CABLE DIAGRAM LEGEND

- R TEMPORARY TRAFFIC SIGNAL SECTION
- C 12" PEDESTRIAN SIGNAL SECTION
- D C/D INDICATES COUNTDOWN SIGNAL HEAD
- ⊗ TEMPORARY CONTROLLER CABINET
- TEMPORARY SERVICE INSTALLATION
- VEHICLE DETECTOR, INDUCTION LOOP
- ⊗ VEHICLE DETECTION CAMERA
- ⊗ EMERGENCY VEHICLE LIGHT DETECTOR
- ⊗ CONFIRMATION BEACON
- ⊗ PEDESTRIAN PUSHBUTTON
- ⊕ # DENOTES NUMBER OF CONDUCTORS IN CABLE. ALL CABLE NO. 14 AWG. WIRE UNLESS OTHERWISE NOTED.
- ⊕ VENDOR CABLE
- ⊕ RADIO INTERCONNECT



MAINTAIN EXISTING PEDESTRIAN SIGNAL EQUIPMENT AND POST FOR TEMPORARY SIGNAL. CONNECT TO TEMPORARY SPAN WIRE TO TOP OF POST.

NOTE:
PUSHBUTTON "A" SHALL PLACE A CALL IN PHASES 2 AND 8.

I.D.O.T. TRAFFIC SIGNAL INSTALLATION ELECTRICAL SERVICE REQUIREMENTS					TOTAL WATTAGE
TYPE	NO. OF LAMPS	x INCAND.	WATTAGE LED	x % OPERATION	
SIGNAL (RED)	9		17	0.50	76.5
(YELLOW)	9		25	0.25	56.3
(GREEN)	9		15	0.25	33.8
ARROW	4		12	0.10	4.8
PED. SIGNAL	4		25	1.0	100.0
CONTROLLER	1		100	1.0	100.0
ILLUM. SIGN	-		25	1.0	-
FLASHER	-		-	-	-
TOTAL =					371.4

ENERGY COST TO : ILLINOIS DEPARTMENT OF TRANSPORTATION
DIVISION OF HIGHWAYS / DISTRICT 1
201 WEST CENTER COURT / SCHAUMBURG, IL 60196-1096

ENERGY SUPPLY: CONTACT: MICKI MULERO-WILLIAMS
PHONE: (630) 691-4721
COMPANY: COMED

FOUNDATION (DEPTH)	(FT.)	CABLE SLACK	(FT.)	VERTICAL	(FT.)
TYPE A - POST	4	HANDHOLE	6.5	ALL FOUNDATIONS	3.5
C - CONTROLLER W/UPS	4	DOUBLE HANDHOLE	13	MAST ARM (L) POLE	20'-H.-2 =
D - CONTROLLER	4	SIGNAL POST	2	BRACKET MOUNTED	13
E - MAST ARM POLE		CONTROLLER CAB.	1	PED. PUSHBUTTON	6
30"	15	FIBER OPTIC	13	ELECTRIC SERVICE	13.5
36"	15	ELECTRIC SERVICE	1	SERVICE TO GROUND	13.5
42"	25	GROUND CABLE	1	POST MOUNTED	6

FILE NAME =
02_TempCablePlan_RandOldHicks.dgn

USER NAME = #USER#
DESIGNED - CH, RP
DRAWN - NY
CHECKED - MJL
PLOT SCALE = #SCALE#
PLOT DATE = 1/27/2009

REVIS -
REVIS -
REVIS -
REVIS -

STATE OF ILLINOIS
DEPARTMENT OF TRANSPORTATION

TEMPORARY CABLE PLAN
TEMPORARY PHASE DESIGNATION DIAGRAM
U.S. ROUTE 12 / IL ROUTE 53 (RAND ROAD) AND OLD HICKS ROAD

SCALE: N.T.S. SHEET NO. OF SHEETS STA. TO STA.

JACOBS		ONE NORTH FRANKLIN CHICAGO IL, 60606 312-251-3000		
F.A.P. RTE. 334	SECTION 2008-08-31	COUNTY COOK	TOTAL SHEETS 80	SHEET NO. 12
CONTRACT NO. 60F87				
FED. ROAD DIST. NO.		ILLINOIS FED. AID PROJECT		