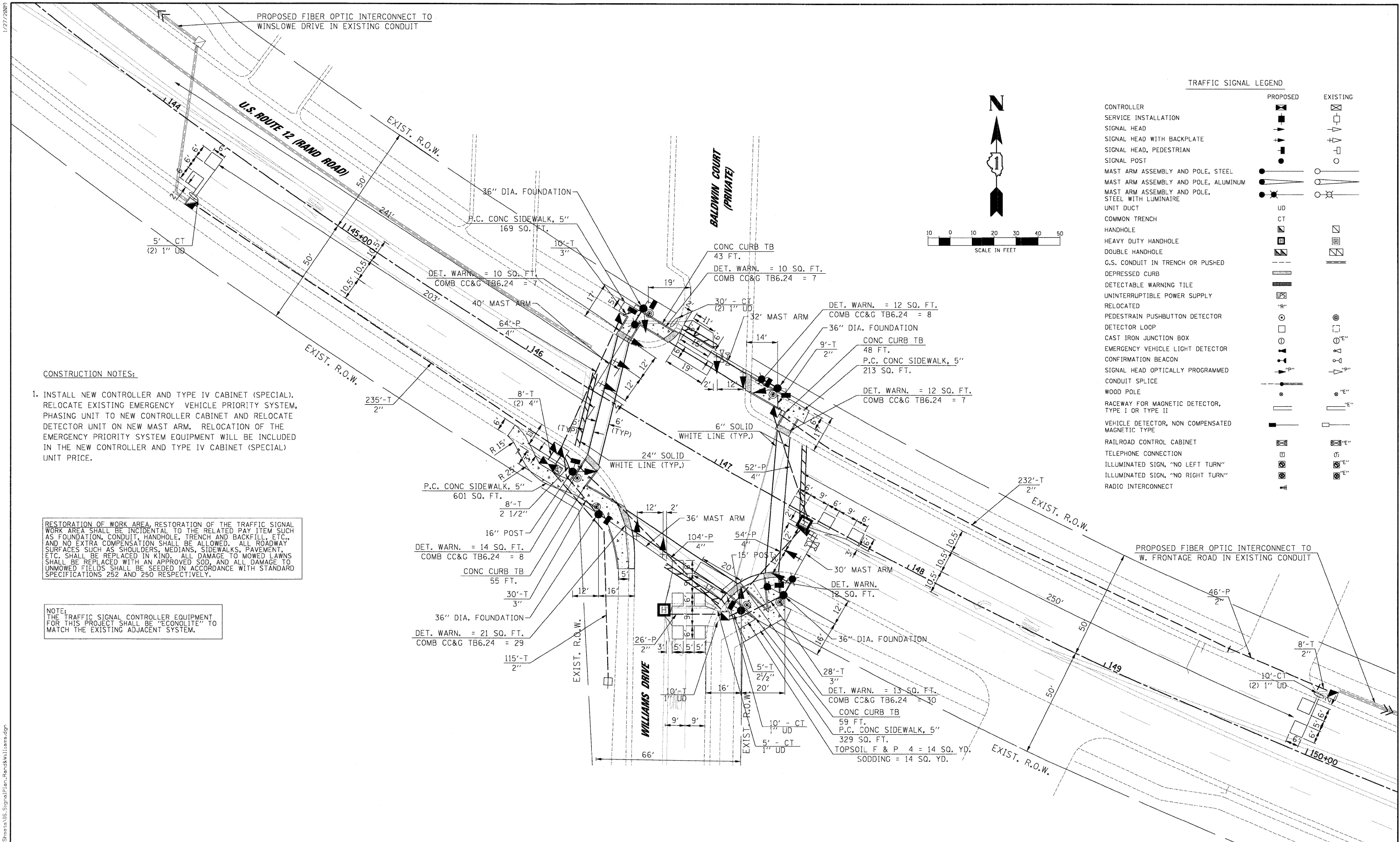


1/27/2009

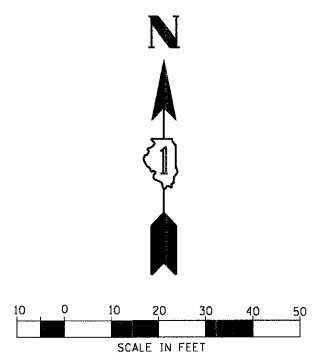


CONSTRUCTION NOTES:

1. INSTALL NEW CONTROLLER AND TYPE IV CABINET (SPECIAL). RELOCATE EXISTING EMERGENCY VEHICLE PRIORITY SYSTEM, PHASING UNIT TO NEW CONTROLLER CABINET AND RELOCATE DETECTOR UNIT ON NEW MAST ARM. RELOCATION OF THE EMERGENCY PRIORITY SYSTEM EQUIPMENT WILL BE INCLUDED IN THE NEW CONTROLLER AND TYPE IV CABINET (SPECIAL) UNIT PRICE.

RESTORATION OF WORK AREA, RESTORATION OF THE TRAFFIC SIGNAL WORK AREA SHALL BE INCIDENTAL TO THE RELATED PAY ITEM SUCH AS FOUNDATION, CONDUIT, HANDHOLE, TRENCH AND BACKFILL, ETC., AND NO EXTRA COMPENSATION SHALL BE ALLOWED. ALL ROADWAY SURFACES SUCH AS SHOULDERS, MEDIANS, SIDEWALKS, PAVEMENT, ETC. SHALL BE REPLACED IN KIND. ALL DAMAGE TO MOWED LAWNS SHALL BE REPLACED WITH AN APPROVED SOD, AND ALL DAMAGE TO UNMOWED FIELDS SHALL BE SEEDING IN ACCORDANCE WITH STANDARD SPECIFICATIONS 252 AND 250 RESPECTIVELY.

NOTE:
THE TRAFFIC SIGNAL CONTROLLER EQUIPMENT FOR THIS PROJECT SHALL BE "ECONOLITE" TO MATCH THE EXISTING ADJACENT SYSTEM.



TRAFFIC SIGNAL LEGEND

	PROPOSED	EXISTING
CONTROLLER	[Symbol]	[Symbol]
SERVICE INSTALLATION	[Symbol]	[Symbol]
SIGNAL HEAD	[Symbol]	[Symbol]
SIGNAL HEAD WITH BACKPLATE	[Symbol]	[Symbol]
SIGNAL HEAD, PEDESTRIAN	[Symbol]	[Symbol]
SIGNAL POST	[Symbol]	[Symbol]
MAST ARM ASSEMBLY AND POLE, STEEL	[Symbol]	[Symbol]
MAST ARM ASSEMBLY AND POLE, ALUMINUM	[Symbol]	[Symbol]
MAST ARM ASSEMBLY AND POLE, STEEL WITH LUMINAIRE	[Symbol]	[Symbol]
UNIT DUCT	[Symbol]	[Symbol]
COMMON TRENCH	[Symbol]	[Symbol]
HANDHOLE	[Symbol]	[Symbol]
HEAVY DUTY HANDHOLE	[Symbol]	[Symbol]
DOUBLE HANDHOLE	[Symbol]	[Symbol]
G.S. CONDUIT IN TRENCH OR PUSHED	[Symbol]	[Symbol]
DEPRESSED CURB	[Symbol]	[Symbol]
DETECTABLE WARNING TILE	[Symbol]	[Symbol]
UNINTERRUPTIBLE POWER SUPPLY	[Symbol]	[Symbol]
RELOCATED	[Symbol]	[Symbol]
PEDESTRIAN PUSHBUTTON DETECTOR	[Symbol]	[Symbol]
DETECTOR LOOP	[Symbol]	[Symbol]
CAST IRON JUNCTION BOX	[Symbol]	[Symbol]
EMERGENCY VEHICLE LIGHT DETECTOR	[Symbol]	[Symbol]
CONFIRMATION BEACON	[Symbol]	[Symbol]
SIGNAL HEAD OPTICALLY PROGRAMMED	[Symbol]	[Symbol]
CONDUIT SPLICE	[Symbol]	[Symbol]
WOOD POLE	[Symbol]	[Symbol]
RACEWAY FOR MAGNETIC DETECTOR, TYPE I OR TYPE II	[Symbol]	[Symbol]
VEHICLE DETECTOR, NON COMPENSATED MAGNETIC TYPE	[Symbol]	[Symbol]
RAILROAD CONTROL CABINET	[Symbol]	[Symbol]
TELEPHONE CONNECTION	[Symbol]	[Symbol]
ILLUMINATED SIGN, "NO LEFT TURN"	[Symbol]	[Symbol]
ILLUMINATED SIGN, "NO RIGHT TURN"	[Symbol]	[Symbol]
RADIO INTERCONNECT	[Symbol]	[Symbol]

FILE NAME =	USER NAME = #USER#
16_SignalPlan_Rand&Williams.dgn	
PLOT SCALE = #SCALE#	
PLOT DATE = 1/27/2009	

DESIGNED - CH	REVISED -
DRAWN - MP, AG	REVISED -
CHECKED - MJL	REVISED -
DATE - 1/22/2009	REVISED -

**STATE OF ILLINOIS
DEPARTMENT OF TRANSPORTATION**

**TRAFFIC SIGNAL MODERNIZATION PLAN
U.S. ROUTE 12 (RAND ROAD) AND WILLIAMS DRIVE**

SCALE: 1"=20' SHEET NO. OF SHEETS STA. TO STA.

JACOBS		ONE NORTH FRANKLIN CHICAGO IL, 60606 312-251-3000	
F.A.P. RTE.	SECTION	COUNTY	TOTAL SHEETS
334	2008-08-3I	COOK	80
			SHEET NO. 27
CONTRACT NO. 60F87			
FED. ROAD DIST. NO.		ILLINOIS FED. AID PROJECT	