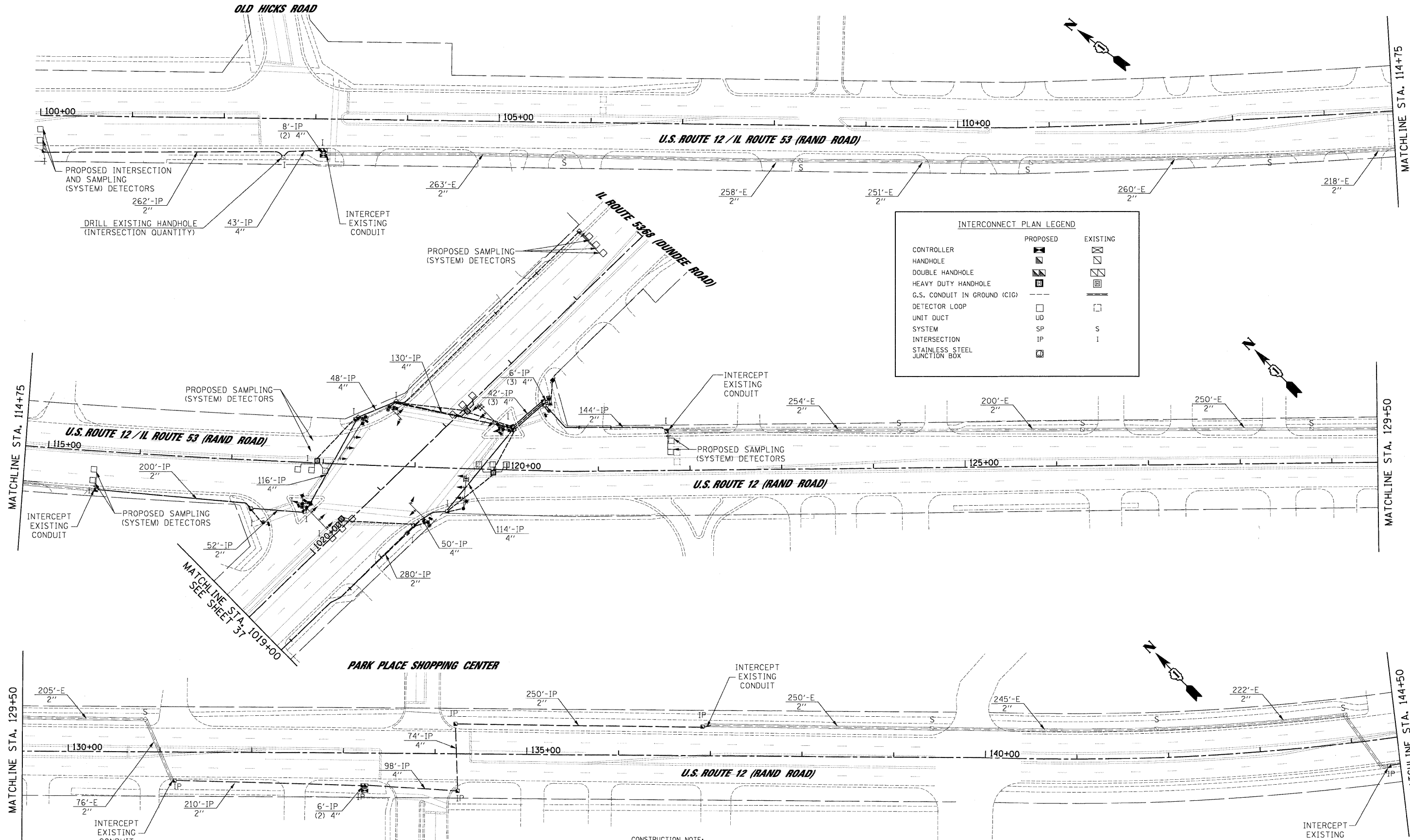


1/27/2009



INTERCONNECT PLAN LEGEND

	PROPOSED	EXISTING
CONTROLLER		
HANDHOLE		
DOUBLE HANDHOLE		
HEAVY DUTY HANDHOLE		
G.S. CONDUIT IN GROUND (CIG)		
DETECTOR LOOP		
UNIT DUCT	UD	S
SYSTEM	SP	S
INTERSECTION	IP	I
STAINLESS STEEL JUNCTION BOX		

CONSTRUCTION NOTE:
 AVAILABILITY OF CONDUITS, HAVE NOT BEEN FIELD VERIFIED.
 CONTRACTOR MUST VERIFY EXISTING CONDITIONS BEFORE COMMENCING WORK.

FILE NAME = 31-InterconnectPlan_Rand.dgn

USER NAME = #USER#	DESIGNED - MJL, JS	REVISED -
PLOT SCALE = #SCALE#	DRAWN - MP	REVISED -
PLOT DATE = 1/27/2009	CHECKED - CH	REVISED -
	DATE - 1/22/2009	REVISED -

**STATE OF ILLINOIS
 DEPARTMENT OF TRANSPORTATION**

INTERCONNECT PLAN
 U.S. ROUTE 12 (RAND ROAD) - FROM OLD HICKS ROAD TO KENNICOTT DRIVE
 IL ROUTE 68 (DUNDEE ROAD) - FROM HICKS ROAD TO RAND ROAD

SCALE: 1"=50' SHEET NO. OF SHEETS STA. TO STA.

JACOBS ONE NORTH FRANKLIN CHICAGO IL, 60606 312-251-3000

F.A.P. RTE. 334	SECTION 2008-08-3I	COUNTY COOK	TOTAL SHEETS 80	SHEET NO. 35
CONTRACT NO. 60F87				
FED. ROAD DIST. NO. ILLINOIS FED. AID PROJECT				