

F.A.P. RTE.	SECTION	COUNTY	TOTAL SHEETS	SHEET NO.
	2009-003 TS	KANE	28	1
FED. ROAD DIST. NO.	ILLINOIS	CONTRACT NO. 60F98		

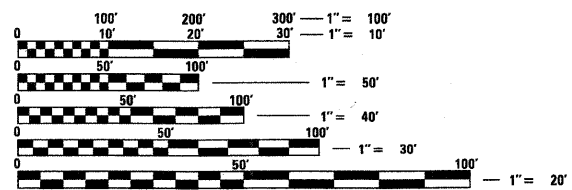
D-91-312-09

**INDEX OF SHEETS**

1. TITLE SHEET
2. GENERAL NOTES
3. SUMMARY OF QUANTITIES
- 4.-7. DISTRICT ONE STANDARD TRAFFIC SIGNAL DESIGN DETAILS
8. TEMPORARY TRAFFIC SIGNAL INSTALLATION AND EXISTING TRAFFIC SIGNAL EQUIPMENT REMOVAL PLAN  
IL ROUTE 25 (E. RIVER ROAD) AT MILL STREET
9. TEMPORARY CABLE PLAN AND PHASE DESIGNATION DIAGRAM  
IL ROUTE 25 (E. RIVER ROAD) AT MILL STREET
10. TRAFFIC SIGNAL MODIFICATION PLAN  
IL ROUTE 25 (E. RIVER ROAD) AT MILL STREET
11. SCHEDULE OF QUANTITIES, CABLE PLAN AND PHASE DESIGNATION DIAGRAM  
IL ROUTE 25 (E. RIVER ROAD) AT MILL STREET
12. TRAFFIC SIGNAL MODIFICATION PLAN  
IL ROUTE 38 AND 14TH STREET /BRICHER ROAD
13. SCHEDULE OF QUANTITIES, CABLE PLAN AND PHASE DESIGNATION DIAGRAM  
IL ROUTE 38 AND 14TH STREET /BRICHER ROAD
- 14.-16. INTERCONNECT SCHEMATIC  
RANDALL ROAD
17. TEMPORARY TRAFFIC SIGNAL INSTALLATION AND EXISTING TRAFFIC SIGNAL EQUIPMENT REMOVAL PLAN  
U.S. ROUTE 30 AT IL. ROUTE 47 (BASELINE ROAD)
18. TEMPORARY CABLE PLAN AND PHASE DESIGNATION DIAGRAM  
U.S. ROUTE 30 AT IL. ROUTE 47 (BASELINE ROAD)
19. TRAFFIC SIGNAL MODIFICATION PLAN  
U.S. ROUTE 30 AT IL. ROUTE 47 (BASELINE ROAD)
20. SCHEDULE OF QUANTITIES, CABLE PLAN AND PHASE DESIGNATION DIAGRAM  
U.S. ROUTE 30 AT IL. ROUTE 47 (BASELINE ROAD)
21. IL ROUTE 47 STRIPING PLAN  
U.S. ROUTE 30 AT IL. ROUTE 47 (BASELINE ROAD)
22. INTERCONNECT SCHEMATIC  
IL ROUTE 47
23. MAST ARM MOUNTED STREET NAME SIGN  
IL ROUTE 25 (E. RIVER ROAD) AT MILL STREET
24. MAST ARM MOUNTED STREET NAME SIGN  
U.S. ROUTE 30 AT IL. ROUTE 47 (BASELINE ROAD)
- 25.-26. ILLINOIS DEPARTMENT OF TRANSPORTATION DETAILS  
KANE COUNTY TRAFFIC SIGNAL MODERNIZATION
27. RECORD LIGHTING PLAN - IL ROUTE 38 @ 14th STREET  
KANE COUNTY TRAFFIC SIGNAL MODERNIZATION
28. WIRING DIAGRAM - IL ROUTE 38 @ 14th STREET  
KANE COUNTY TRAFFIC SIGNAL MODERNIZATION

**IDOT STANDARDS:**

- 424001-05 CURB RAMPS FOR SIDEWALKS
- 701001-02 OFF-RD OPERATIONS, 2L, 2W, MORE THAN 15' (4.5m) AWAY
- 701011-02 OFF-RD OPERATIONS, 2L, 2W, DAY ONLY
- 701101-01 OFF-ROAD OPERATIONS, MULTILANE, 4.5 m (15') TO 600 mm (24") FROM PAVEMENT EDGE
- 701106-02 OFF-ROAD OPERATIONS, 2L, 2W, 4.5 m (15') TO 600 mm (24") FROM PAVEMENT EDGE
- 701301-03 LANE CLOSURE, 2L, 2W, SHORT TIME OPERATIONS
- 701201-03 LANE CLOSURE, 2L, 2W, DAY ONLY, FOR SPEEDS > 45 MPH
- 701421-02 LANE CLOSURE, MULTILANE, DAY OPERATIONS ONLY, FOR SPEEDS > 45 MPH TO 55 MPH
- 701501-05 URBAN LANE CLOSURE, 2L, 2W, UNDIVIDED
- 701502-03 URBAN LANE CLOSURE, 2L, 2W, BIDIRECTIONAL LEFT TURN LANE
- 701701-06 URBAN LANE CLOSURE, MULTILANE INTERSECTION
- 701801-04 LANE CLOSURE MULTILANE 1W OR 2W CROSSWALK OR SIDEWALK CLOSURE
- 701901-01 TRAFFIC CONTROL DEVICES
- 720001-01 SIGN PANEL MOUNTING DETAILS
- 814001-02 HANDHOLES
- 814005-02 DOUBLE HANDHOLES
- 857001-01 STANDARD PHASE DESIGNATION DIAGRAMS AND PHASE SEQUENCES
- 886001-01 DETECTOR LOOP INSTALLATION
- 862001-01 UNINTERRUPTIBLE POWER SUPPLY (UPS)
- 877001-03 STEEL MAST ARM ASSEMBLY AND POLE 16" THROUGH 55"
- 877011-04 STEEL COMB. MAST ARM ASSEMBLY AND POLE 16" THROUGH 55"
- 878001-07 CONCRETE FOUNDATION DETAILS
- 880001-01 SPAN WIRE MOUNTED SIGNALS AND FLASHING BEACON INSTALLATION
- 880006-01 TRAFFIC SIGNAL MOUNTING DETAILS



FULL SIZE PLANS HAVE BEEN PREPARED USING STANDARD ENGINEERING SCALES. REDUCED SIZED PLANS WILL NOT CONFORM TO STANDARD SCALES. IN MAKING MEASUREMENTS ON REDUCED PLANS, THE ABOVE SCALES MAY BE USED.

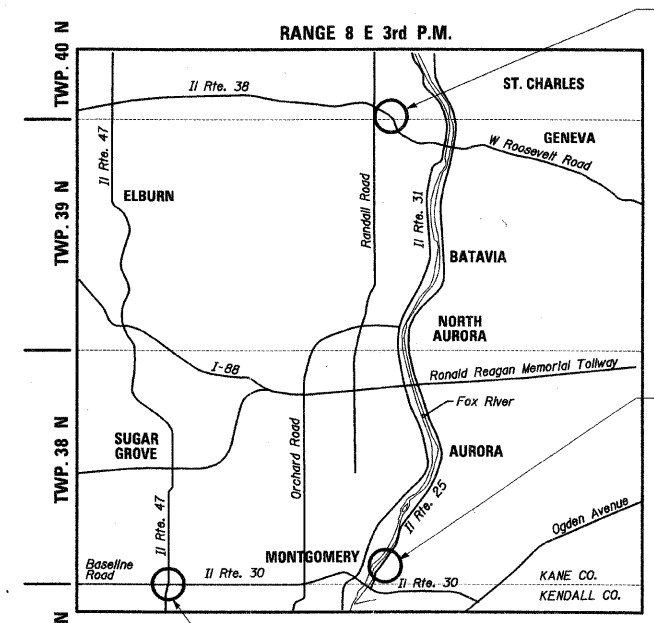
J.U.L.I.E.  
JOINT UTILITY LOCATING INFORMATION FOR EXCAVATORS  
1-800-892-0123  
OR 811

**CONTRACT NO. 60F98**

STATE OF ILLINOIS  
DEPARTMENT OF TRANSPORTATION

DIVISION OF HIGHWAYS  
**PLANS FOR PROPOSED  
FEDERAL AID HIGHWAY**

DISTRICT 1  
HIGHWAY SAFETY IMPROVEMENT PROJECT  
FAU 2503 (IL ROUTE 25 - EAST RIVER ROAD) @ MILL STREET  
FAP 347 ( IL ROUTE 38) @ 14TH STREET/BRICHER ROAD  
FAP 349 ( US ROUTE 30) @ IL ROUTE 47/BASELINE ROAD  
KANE COUNTY PROJECT: HSIP-000S(669)  
SECTION 2009-003 TS  
C-91-312-09

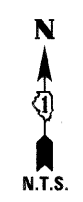


US ROUTE 30 @  
IL ROUTE 47 /BASELINE ROAD

LOCATION MAP

IL ROUTE 38 @  
14th STREET /BRICHER ROAD

IL ROUTE 25 (E. RIVER ROAD)  
@ MILL STREET



*Bruce P. Talbot*  
Expires 11-30-09

PREPARED BY:  
**CEMCON, Ltd.**  
Consulting Engineers, Land Surveyors & Planners  
2280 White Oak Circle, Suite 100  
Aurora, Illinois 60504 9675  
Ph: 630.862.2100 Fax: 630.862.2199  
E-Mail: cadd@cemcon.com Website: www.cemcon.com

STATE OF ILLINOIS  
DEPARTMENT OF TRANSPORTATION  
DIVISION OF HIGHWAYS

SUBMITTED Jan 30 2009  
*Debra M. Okach*  
DEPUTY DIRECTOR OF HIGHWAYS, REGION ENGINEER

March 27 2009  
*Charles J. Ingersoll*  
ENGINEER OF DESIGN AND ENVIRONMENT

March 27 2009  
*Christine M. Reed*  
DIRECTOR OF HIGHWAYS, CHIEF ENGINEER

**PRINTED BY THE AUTHORITY  
OF THE STATE OF ILLINOIS**

BUREAU OF TRAFFIC, DISTRICT ONE: STEPHEN TRAVIA / DARYLE DREW (847) 705-4420