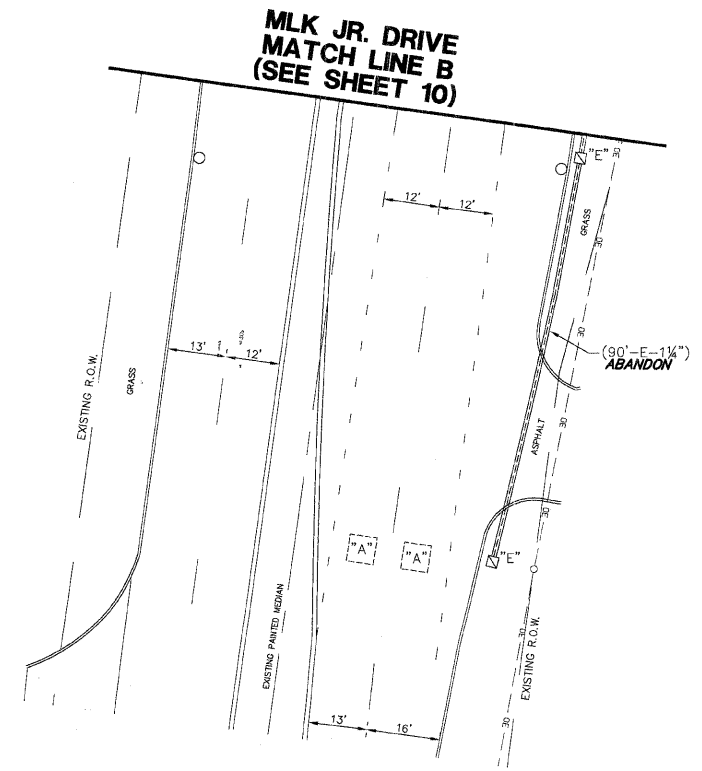
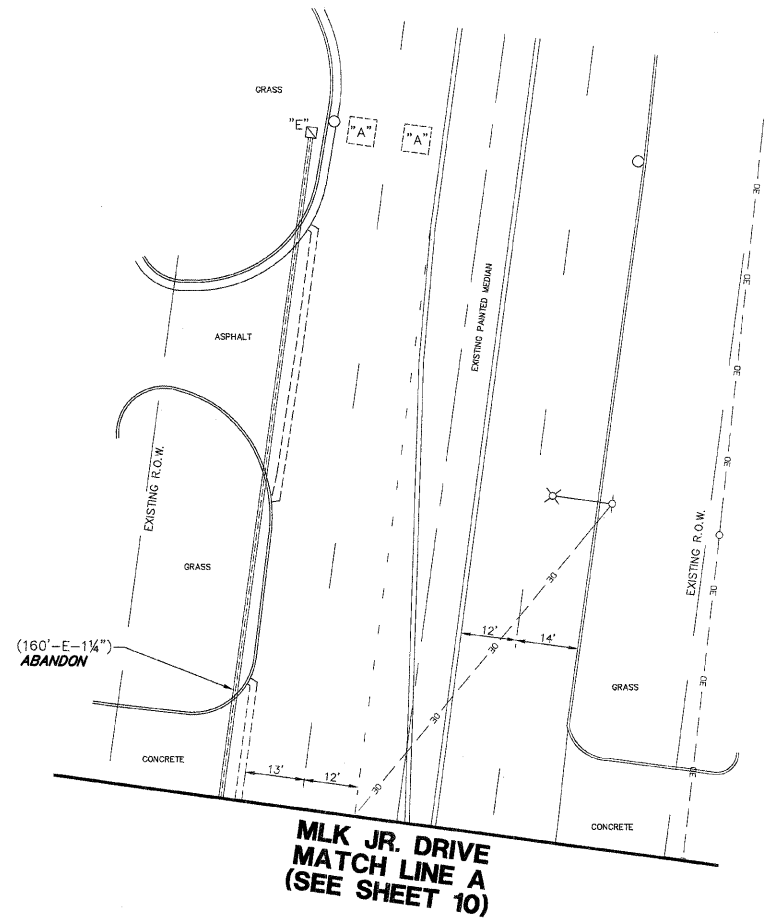
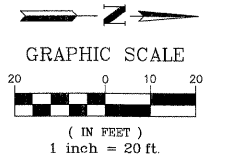


EXISTING EQUIPMENT TO BE REMOVED

- ◁ EXISTING TRAFFIC SIGNAL HEAD TO BE REMOVED
- "E" ■ EXISTING SERVICE INSTALLATION TO BE REMOVED
- "E" ○ EXISTING SIGNAL POST AND FOUNDATION TO BE REMOVED
- ⚡ EXISTING ALUMINUM MAST ARM POLE AND FOUNDATION TO BE REMOVED
- ⊠ EXISTING CONTROLLER AND FOUNDATION TO BE REMOVED
- "E" □ EXISTING HANDHOLE TO BE REMOVED
- EXISTING PEDESTRIAN SIGNAL HEAD TO BE REMOVED
- EXISTING PEDESTRIAN PUSHBUTTON TO BE REMOVED
- ▶ EXISTING EMERGENCY VEHICLE LIGHT DETECTOR TO BE REMOVED
- ⚡ EXISTING CONFIRMATION BEACON TO BE REMOVED
- "E" ■ EXISTING HEAVY-DUTY HANDHOLE TO BE REMOVED
- EXISTING STEEL MAST ARM POLE AND FOUNDATION TO BE REMOVED



TEMPORARY TRAFFIC SIGNAL LEGEND

- ◁ TEMPORARY TRAFFIC SIGNAL HEAD SPAN WIRE MOUNTED ORIGINAL LOCATION
- ◁ TEMPORARY TRAFFIC SIGNAL HEAD SPAN WIRE MOUNTED SECONDARY LOCATION
- ⊗ TEMPORARY WOOD POLE (CLASS 5 OR BETTER) 45 FOOT (13.7m) MINIMUM.
- ⊠ TEMPORARY CONTROLLER CABINET
- TEMPORARY SPAN WIRE, TETHER WIRE, AND CABLE
- TEMPORARY SERVICE INSTALLATION
- TEMPORARY PEDESTRIAN SIGNAL HEAD, BRACKET MOUNTED
- PEDESTRIAN PUSHBUTTON DETECTOR
- ▶ EMERGENCY VEHICLE LIGHT DETECTOR
- ⚡ CONFIRMATION BEACON
- VEHICLE DETECTOR, INDUCTION LOOP
- G.S. CONDUIT IN GROUND
- HANDHOLE
- HEAVY DUTY HANDHOLE
- ⊗ LUMINAIRE
- VIDEO DETECTION CAMERA
- "A" ABANDON

THE TRAFFIC SIGNAL CONTROL EQUIPMENT FOR THIS PROJECT SHALL BE "NTCIP" COMPLIANT.

FILE NAME = 4085.800-TR1.dgn	USER NAME =	DESIGNED - JRD	REVISED -	STATE OF ILLINOIS DEPARTMENT OF TRANSPORTATION	TEMPORARY TRAFFIC SIGNAL INSTALLATION AND REMOVAL OF EXISTING TRAFFIC SIGNAL EQUIPMENT ILL RTE 131 (GREEN BAY RD.) AND MARTIN LUTHER KING JR. DRIVE	F.A.U. RTE. 27W	SECTION 2009-006 TS	COUNTY 097(LAKE)ILK	TOTAL SHEETS 21	SHEET NO. II
PLOT SCALE = 1"=20'		CHECKED - KLB	REVISED -	SCALE: 1"=20' SHEET NO. 11 OF 21 SHEETS STA. TO STA.		ILLINOIS FED. AID PROJECT		CONTRACT NO. 60G02		
PLOT DATE = 1/30/09		DATE - 1/30/09	REVISED -	GHA #4085.805						