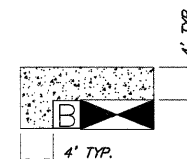
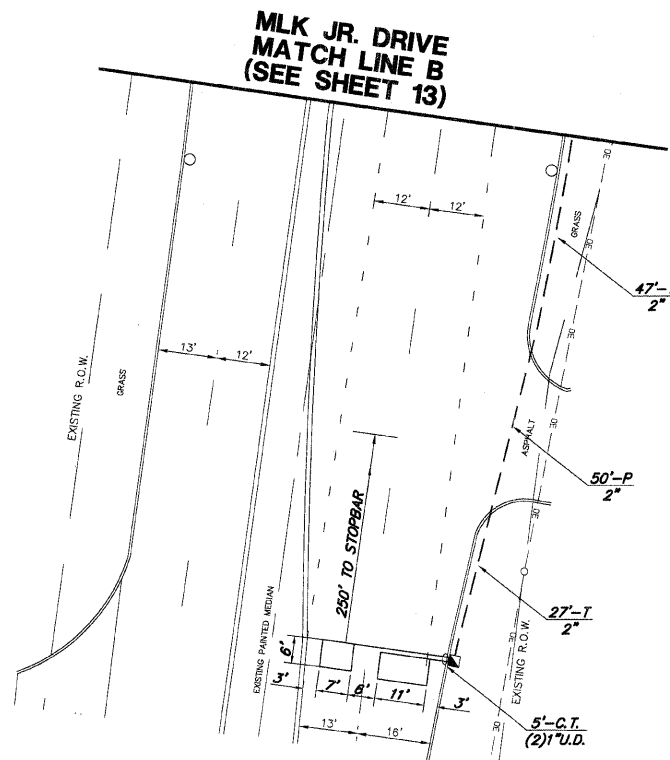
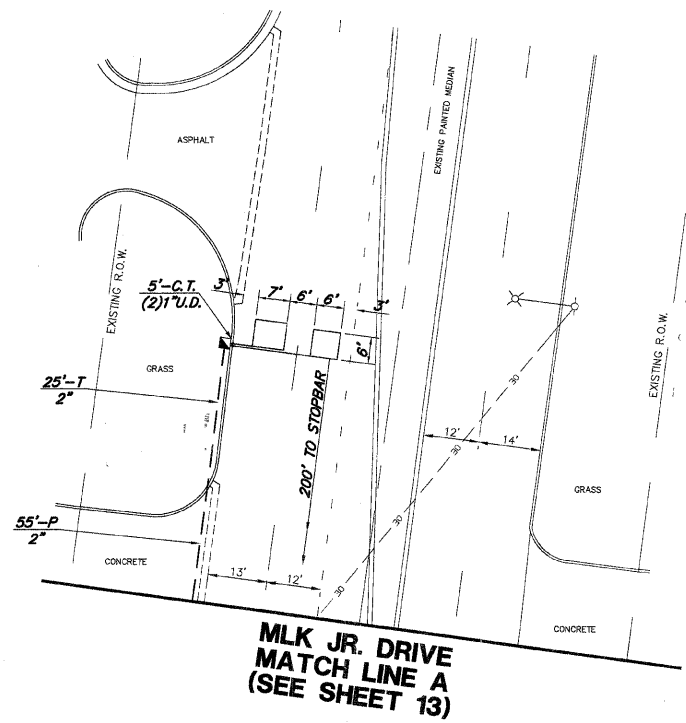
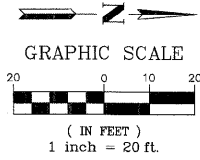
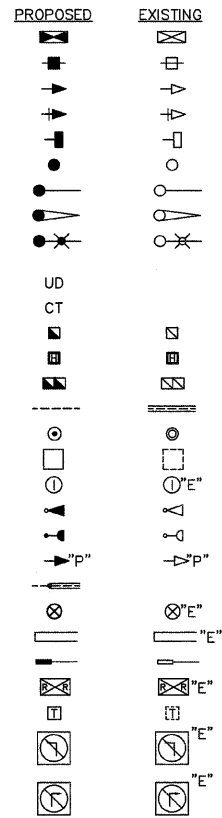


**TRAFFIC SIGNAL LEGEND**

- CONTROLLER
- SERVICE INSTALLATION
- SIGNAL HEAD AND POST
- SIGNAL HEAD AND BACKPLATE
- SIGNAL HEAD, PEDESTRIAN
- SIGNAL POST
- MAST ARM ASSEMBLY AND POLE, STEEL
- MAST ARM ASSEMBLY AND POLE, ALUMINUM
- COMBINATION MAST ARM ASSEMBLY AND POLE, STEEL WITH LUMINAIRE
- UNIT DUCT
- COMMON TRENCH
- HANDHOLE
- HEAVY DUTY HANDHOLE
- DOUBLE HANDHOLE
- G.S. CONDUIT IN TRENCH (T) OR PUSHED (P)
- PEDESTRIAN PUSHBUTTON DETECTOR
- DETECTOR LOOP
- CAST IRON JUNCTION BOX
- EMERGENCY VEHICLE SYSTEM DETECTOR
- CONFIRMATION BEACON
- SIGNAL HEAD OPTICALLY PROGRAMMED
- CONDUIT SPLICE
- WOOD POLE
- RACEWAY FOR MAGNETIC DETECTOR, TYPE I OR TYPE II
- VEHICLE DETECTOR, NON COMPENSATED MAGNETIC TYPE
- RAILROAD CONTROL CABINET
- TELEPHONE CONNECTION
- ILLUMINATED SIGN "NO LEFT TURN"
- ILLUMINATED SIGN "NO RIGHT TURN"



- 1) 5" THICK CONCRETE PAD SHALL BE POURED NEXT TO NEW CONTROLLER AND/OR UPS TO PROVIDE EASY MAINTENANCE ACCESS.
  - 2) MAINTENANCE PAD SHALL EXTEND TO THE EDGE OF EXISTING CONTROLLER FOUNDATION.
  - 3) COST OF PAD SHALL BE INCLUDED IN THE PRICE OF THE UNINTERRUPTIBLE POWER SUPPLY PAY ITEM.
- CONCRETE MAINTENANCE PAD DETAIL (TYPICAL)**  
N.T.S.

THE TRAFFIC SIGNAL CONTROL EQUIPMENT FOR THIS PROJECT SHALL BE "NTCIP" COMPLIANT.

|                                 |                     |                |           |   |   |  |             |             |              |           |  |  |
|---------------------------------|---------------------|----------------|-----------|---|---|--|-------------|-------------|--------------|-----------|--|--|
| FILE NAME =<br>4085.800-TR1.dgn | USER NAME =         | DESIGNED - JRD | REVISED - | STATE OF ILLINOIS<br>DEPARTMENT OF TRANSPORTATION | TRAFFIC SIGNAL MODERNIZATION PLAN<br>ILL RTE 131 (GREEN BAY RD.) AND MARTIN LUTHER KING JR. DRIVE | F.A.J. RTE. =  | SECTION     | COUNTY      | TOTAL SHEETS | SHEET NO. |  |  |
|                                 | PLOT SCALE = 1"=20' | CHECKED - KLB  | REVISED - |   |   | 27#  | 2009-006 TS | 097(LAKE)LK | 21           | 14        |  |  |
|                                 | PLOT DATE = 1/30/09 | DATE - 1/30/09 | REVISED - |   |   | SCALE: 1"=20' SHEET NO. 14 OF 21 SHEETS STA. TO STA. |             |             |              |           |  |  |
|                                 | CONTRACT NO. 60G02  |                |           |   |   |  |             |             |              |           |  |  |

GHA #4085.805

ILLINOIS FED. AID PROJECT