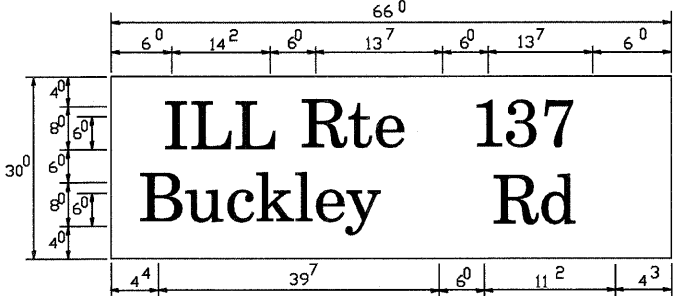


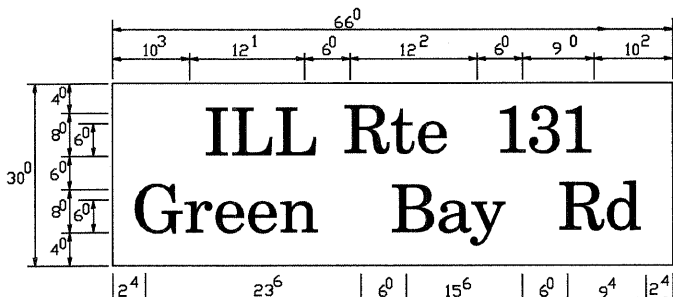
REGINA WEBSTER AND ASSOC. INC. CIVIL ENGINEERING CONSULTANTS 560 North Cicero Avenue, Suite 500 Chicago, Illinois 60623-1369 RWA Regina Webster & Associates, Inc.

PANEL SIGN DESIGN TYPE 2



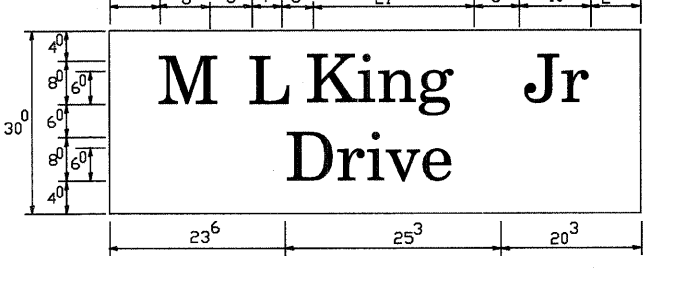
Sq. M. each
13.75 Sq. Ft. each
2 Required
Design Series D

PANEL SIGN DESIGN TYPE 2



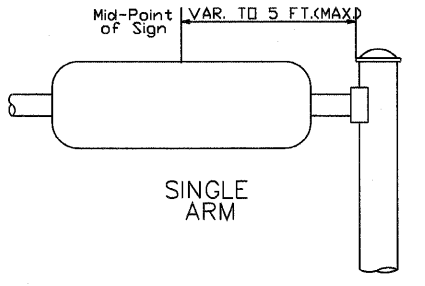
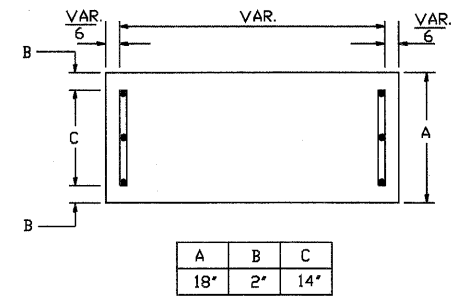
Sq. M. each
13.75 Sq. Ft. each
4 Required
Design Series C

PANEL SIGN DESIGN TYPE 2

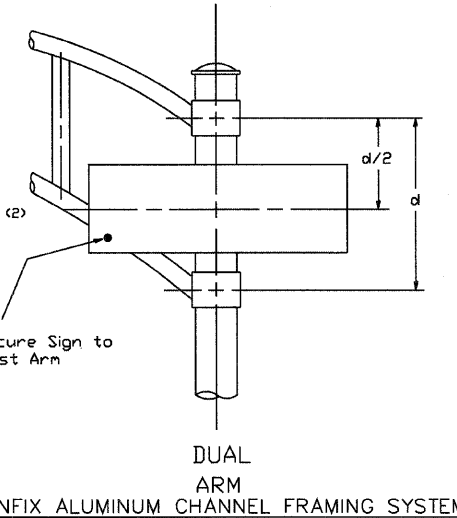
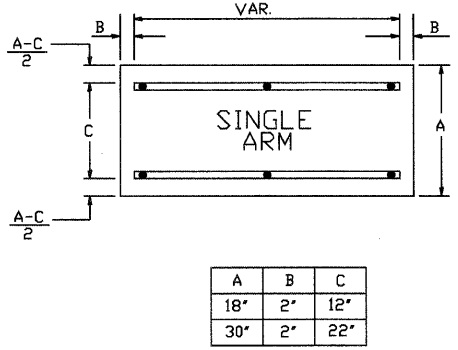


Sq. M. each
13.75 Sq. Ft. each
2 Required
Design Series C

SUPPORTING CHANNELS



SUPPORTING CHANNELS



DUAL ARM SIGNFIX ALUMINUM CHANNEL FRAMING SYSTEM

Shall be used. See Note #5.

Upper Case To Lower Case Spacing Chart 8-6 Inch Series "C & D"

EXAMPLE, 2 3 DENOTES 3/8

Spacing chart table for Upper Case To Lower Case, 8-6 Inch Series "C & D". Includes First Letter and Second Letter columns.

Lower Case To Lower Case Spacing Chart 6 Inch Series "C & D"

Spacing chart table for Lower Case To Lower Case, 6 Inch Series "C & D". Includes First Letter and Second Letter columns.

Number To Number Spacing Chart 8 Inch Series "C & D"

Spacing chart table for Number To Number, 8 Inch Series "C & D". Includes First Number and Second Number columns.

UPPER AND LOWER CASE LETTER WIDTHS

Table of letter widths for 6 inch upper case letters, 8 inch upper case letters, and 6 inch lower case letters.

Table of letter widths for 6 inch series and 8 inch series, categorized by number.

GENERAL NOTES

- 1. WHERE MAST ARM MOUNTED STREET NAME SIGNS ARE SPECIFIED, THE MAST ARM ASSEMBLY AND POLES SHALL BE DESIGNED TO SUPPORT THE LOADINGS CALLED FOR IN STANDARDS 834001, 834006 AND 834011, AS APPLICABLE, PLUS TWO (2) SIGN PANELS 2'-6" x 6'-0" MOUNTED AS SHOWN. THE DESIGN SHALL BE IN ACCORDANCE WITH THE REQUIREMENTS OF THE CURRENT "STANDARD SPECIFICATIONS FOR STRUCTURAL SUPPORTS FOR HIGHWAY SIGNS, LUMINAIRES, AND TRAFFIC SIGNALS" AS PUBLISHED BY THE AMERICAN ASSOCIATION OF STATE HIGHWAY AND TRANSPORTATION OFFICIALS FOR 80 M.P.H. WIND VELOCITY.
2. ALL SIGNS SHALL HAVE A WHITE REFLECTORIZED LEGEND AND BORDER ON A GREEN REFLECTORIZED BACKGROUND, TYPE A SHEETING.
3. THE SIGN LENGTH SHOULD BE INCREASED IN 6-INCH INCREMENTS, BUT THE OVERALL LENGTH SHOULD NOT EXCEED 6'-0".
4. ALL BORDERS SHALL BE 3/4" WIDE AND CORNER RADIUS SHALL BE 2-1/4".
5. SIGNFIX ALUMINUM CHANNEL FRAMING SYSTEM SHALL BE USED FOR ALL SIGNS ATTACHED TO SIGNAL POLES AND POSTS. LOCAL SUPPLIERS OF THE SIGNFIX ALUMINUM CHANNEL FRAMING SYSTEM ARE:
* A.K.T. CORPORATION (SCHAUMBURG, IL)
* TUCKER COMPANY, INC. (WAUWATOSA, WI)
* AMERICAN FABRICATION CO. (CHICAGO HEIGHTS, IL)
* WESTERN TRAFFIC CONTROL INC. (CICERO, IL)
PARTS LISTING: SIGN CHANNEL (PART #HFN053 (MED. CHANNEL), 1/4" x 14 x 1" H.W.H. #3, SELF TAPPING WITH NEOPRENE WASHER, PART #HFN034 (UNIVERSAL)), BRACKETS (CHANNEL CLAMPS WITH STAINLESS STEEL STRAPPING), OTHER BRANDS OF MOUNTING HARDWARE ARE ACCEPTABLE, BASED UPON THE DEPARTMENT'S APPROVAL AND COMPATIBILITY WITH THE CHANNEL/BRACKET OF THE ABOVE PRODUCT.

REVISIONS table, ILLINOIS DEPARTMENT OF TRANSPORTATION logo, MAST ARM MOUNTED STREET NAME SIGNS, SCALE: VERT. NONE, HORIZ. DATE 1-01-02, DRAWN BY: RDB, DESIGNED BY: JHE, CHECKED BY: DAD