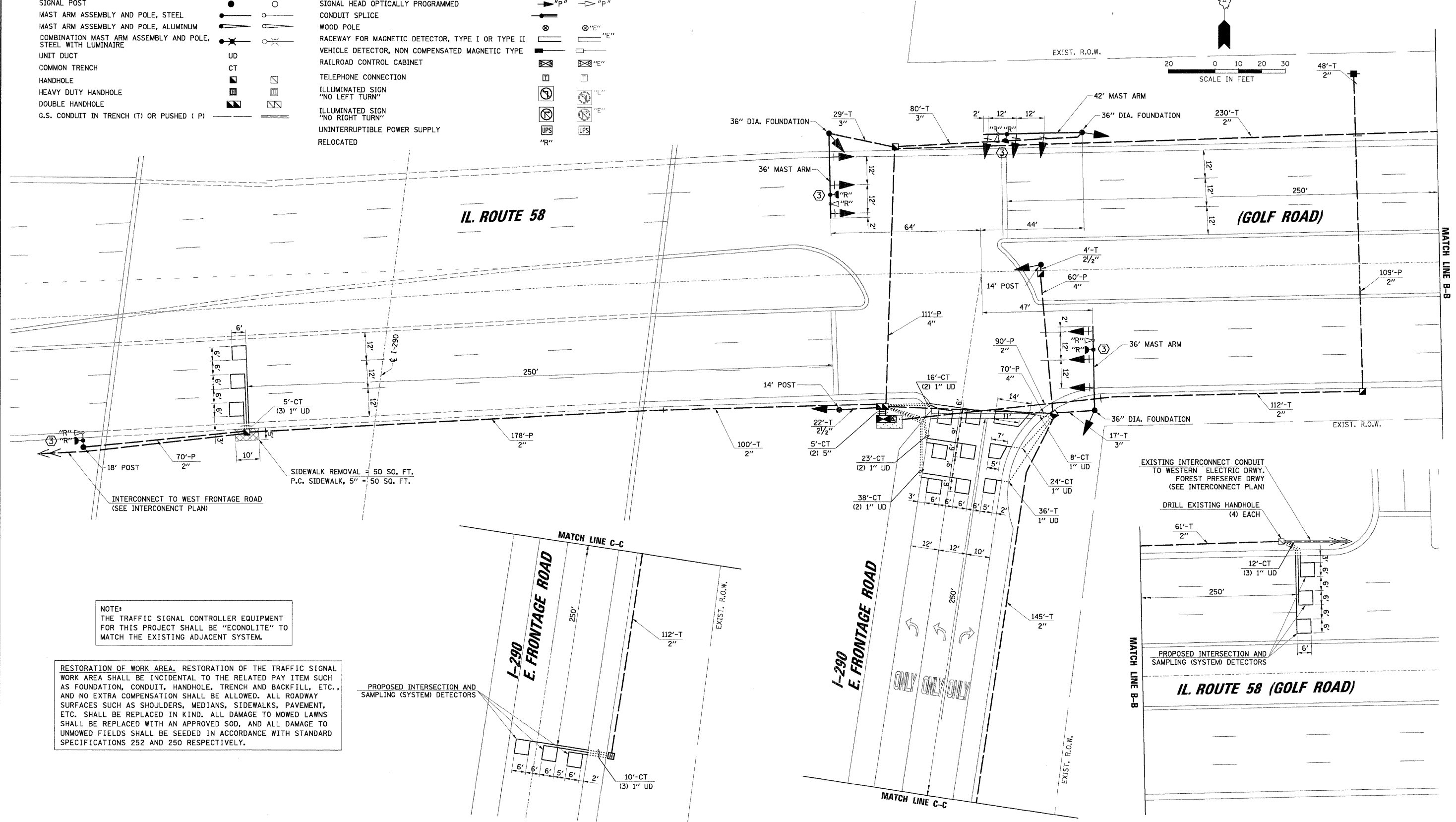
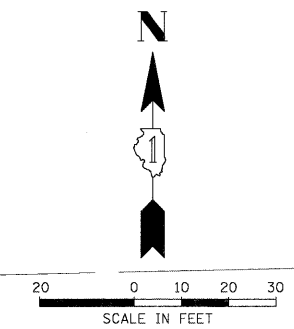


**TRAFFIC SIGNAL LEGEND**

	PROPOSED	EXISTING		PROPOSED	EXISTING
CONTROLLER	[Symbol]	[Symbol]	PEDESTRIAN PUSHBUTTON DETECTOR	[Symbol]	[Symbol]
SERVICE INSTALLATION	[Symbol]	[Symbol]	DETECTOR LOOP	[Symbol]	[Symbol]
SIGNAL HEAD	[Symbol]	[Symbol]	CAST IRON JUNCTION BOX	[Symbol]	[Symbol]
SIGNAL HEAD WITH BACKPLATE	[Symbol]	[Symbol]	EMERGENCY VEHICLE LIGHT DETECTOR	[Symbol]	[Symbol]
SIGNAL HEAD, PEDESTRIAN	[Symbol]	[Symbol]	CONFIRMATION BEACON	[Symbol]	[Symbol]
SIGNAL POST	[Symbol]	[Symbol]	SIGNAL HEAD OPTICALLY PROGRAMMED	[Symbol]	[Symbol]
MAST ARM ASSEMBLY AND POLE, STEEL	[Symbol]	[Symbol]	CONDUIT SPLICE	[Symbol]	[Symbol]
MAST ARM ASSEMBLY AND POLE, ALUMINUM	[Symbol]	[Symbol]	WOOD POLE	[Symbol]	[Symbol]
COMBINATION MAST ARM ASSEMBLY AND POLE, STEEL WITH LUMINAIRE	[Symbol]	[Symbol]	RACEWAY FOR MAGNETIC DETECTOR, TYPE I OR TYPE II	[Symbol]	[Symbol]
UNIT DUCT	[Symbol]	[Symbol]	VEHICLE DETECTOR, NON COMPENSATED MAGNETIC TYPE	[Symbol]	[Symbol]
COMMON TRENCH	[Symbol]	[Symbol]	RAILROAD CONTROL CABINET	[Symbol]	[Symbol]
HANDHOLE	[Symbol]	[Symbol]	TELEPHONE CONNECTION	[Symbol]	[Symbol]
HEAVY DUTY HANDHOLE	[Symbol]	[Symbol]	ILLUMINATED SIGN "NO LEFT TURN"	[Symbol]	[Symbol]
DOUBLE HANDHOLE	[Symbol]	[Symbol]	ILLUMINATED SIGN "NO RIGHT TURN"	[Symbol]	[Symbol]
G.S. CONDUIT IN TRENCH (T) OR PUSHED (P)	[Symbol]	[Symbol]	UNINTERRUPTIBLE POWER SUPPLY	[Symbol]	[Symbol]
			RELOCATED	[Symbol]	[Symbol]

- CONSTRUCTION NOTES:**
- RELOCATE EXISTING LIGHT DETECTORS AND CONFIRMATION BEACONS TO THE NEW MAST ARMS AND POST.
  - RELOCATE EXISTING LIGHT DETECTOR AMPLIFIER TO NEW CONTROLLER CABINET.
  - ALL EXISTING CONFIRMATION BEACONS SHALL BE RETROFITTED WITH LED INDICATIONS. THIS WORK SHALL BE INCIDENTAL TO THE PAY ITEM: UNINTERRUPTIBLE POWER SUPPLY.



NOTE:  
THE TRAFFIC SIGNAL CONTROLLER EQUIPMENT FOR THIS PROJECT SHALL BE "ECONOLITE" TO MATCH THE EXISTING ADJACENT SYSTEM.

RESTORATION OF WORK AREA. RESTORATION OF THE TRAFFIC SIGNAL WORK AREA SHALL BE INCIDENTAL TO THE RELATED PAY ITEM SUCH AS FOUNDATION, CONDUIT, HANDHOLE, TRENCH AND BACKFILL, ETC., AND NO EXTRA COMPENSATION SHALL BE ALLOWED. ALL ROADWAY SURFACES SUCH AS SHOULDERS, MEDIANS, SIDEWALKS, PAVEMENT, ETC. SHALL BE REPLACED IN KIND. ALL DAMAGE TO MOWED LAWNS SHALL BE REPLACED WITH AN APPROVED SOD, AND ALL DAMAGE TO UNMOWED FIELDS SHALL BE SEEDED IN ACCORDANCE WITH STANDARD SPECIFICATIONS 252 AND 250 RESPECTIVELY.

PROPOSED INTERSECTION AND SAMPLING (SYSTEM) DETECTORS

EXISTING INTERCONNECT CONDUIT TO WESTERN ELECTRIC DRWY. FOREST PRESERVE DRWY (SEE INTERCONNECT PLAN)

DRILL EXISTING HANDHOLE (4) EACH

PROPOSED INTERSECTION AND SAMPLING (SYSTEM) DETECTORS

DATE	BY	DATE	BY

CHRISTOPHER B. BURKE ENGINEERING LTD.  
9575 West Higgins Road, Suite 600  
Rosemont, Illinois 60018  
(847) 823-0500

FILE NAME = ...TSD\_IL58.dgn  
USER NAME = FPAICONE  
DESIGNED - ABR  
DRAWN - FPB / FCP  
CHECKED - MJT  
DATE - 1/26/2009

**STATE OF ILLINOIS  
DEPARTMENT OF TRANSPORTATION**

**TRAFFIC SIGNAL MODERNIZATION PLAN  
IL. ROUTE 58 (GOLF ROAD) AND I-290 E. FRONTAGE ROAD**

SCALE: 1"=20' SHEET NO. OF SHEETS STA. TO STA.

F.A.P. RTE.	SECTION	COUNTY	TOTAL SHEETS	SHEET NO.
VAR	2009-008-TS	COOK	41	29
CONTRACT NO. 60G04				
FED. ROAD DIST. NO. ILLINOIS FED. AID PROJECT				