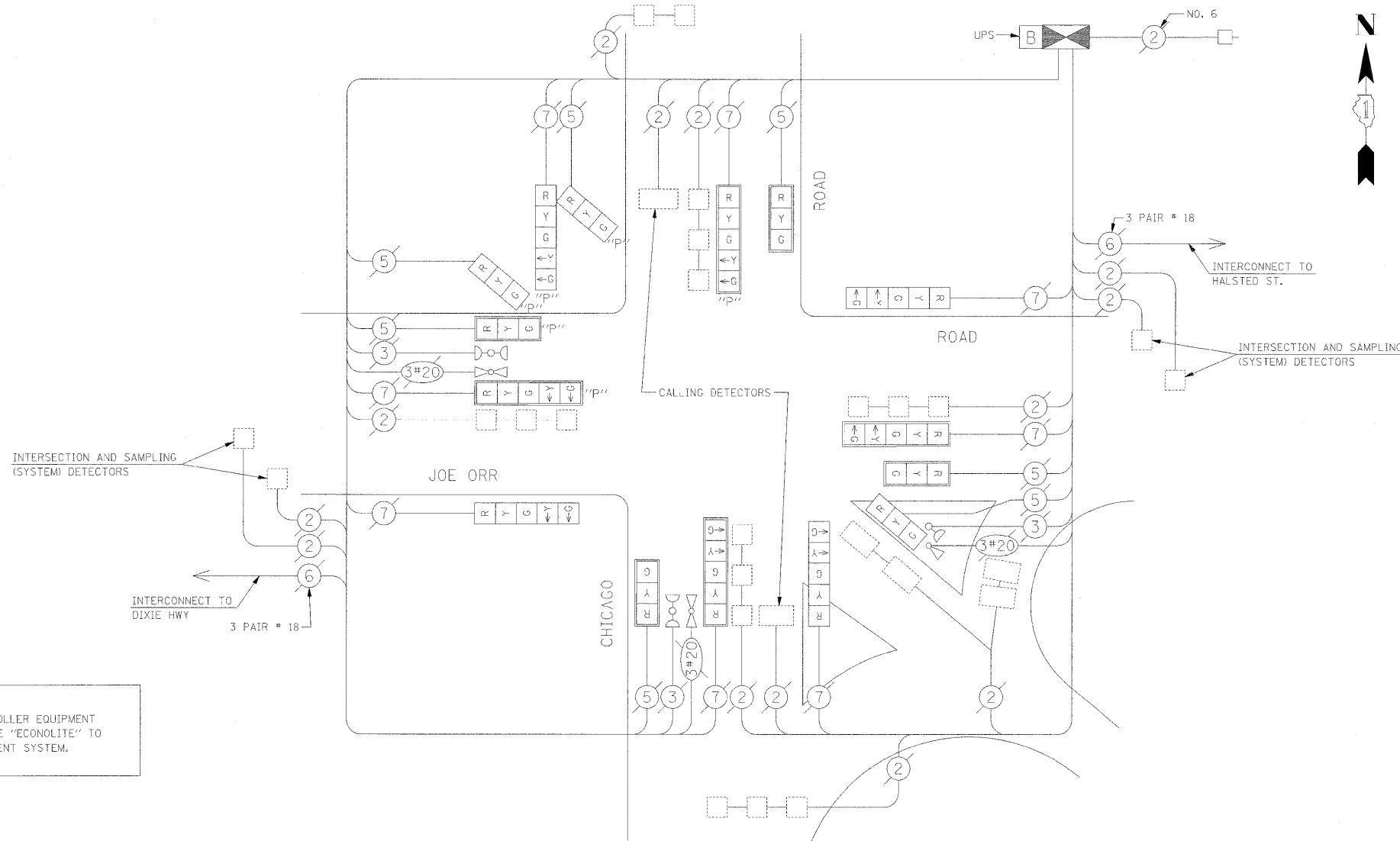


CABLE PLAN LEGEND

PROPOSED	EXISTING	
[Symbol]	[Symbol]	8" (200mm) TRAFFIC SIGNAL SECTION
[Symbol]	[Symbol]	12" (300mm) TRAFFIC SIGNAL SECTION
[Symbol]	[Symbol]	12" (300mm) PEDESTRIAN SIGNAL SECTION
[Symbol]	[Symbol]	12" (300mm) PEDESTRIAN SIGNAL SECTION
[Symbol]	[Symbol]	CONTROLLER CABINET
[Symbol]	[Symbol]	SERVICE INSTALLATION
[Symbol]	[Symbol]	TELEPHONE CONNECTION
[Symbol]	[Symbol]	MAGNETIC DETECTOR
[Symbol]	[Symbol]	PUSHBUTTON DETECTOR
[Symbol]	[Symbol]	VEHICLE DETECTOR, INDUCTION LOOP
[Symbol]	[Symbol]	DENOTES NUMBER OF CONDUCTORS. ALL CABLE NO. 14 EXCEPT AS INDICATED. ALL LOOP DETECTOR CABLE TO BE SHIELDED.
[Symbol]	[Symbol]	SIGNAL FACE WITH BACKPLATE. "P" INDICATES PROGRAMMED HEAD
[Symbol]	[Symbol]	RAILROAD CONTROL CABINET
[Symbol]	[Symbol]	ILLUMINATED SIGN, FIBER OPTIC "NO LEFT TURN"
[Symbol]	[Symbol]	ILLUMINATED SIGN, FIBER OPTIC "NO RIGHT TURN"
[Symbol]	[Symbol]	GROUND ROD AT HANDHOLE, DOUBLE HANDHOLE, OR CONTROLLER
[Symbol]	[Symbol]	GROUND ROD AT POST OR MAST ARM POLE
[Symbol]	[Symbol]	GROUND ROD AT ELECTRIC SERVICE INSTALLATION
[Symbol]	[Symbol]	GROUND CABLE IN CONDUIT NO. 6 SOLID COPPER (GREEN)
[Symbol]	[Symbol]	FIBER OPTIC CABLE IN CONDUIT NO. 62.5/125 2-MM12F & SM12F
[Symbol]	[Symbol]	MICROWAVE VEHICLE SENSOR
[Symbol]	[Symbol]	VIDEO DETECTOR
[Symbol]	[Symbol]	CLOSED CIRCUIT TV
[Symbol]	[Symbol]	EMERGENCY VEHICLE LIGHT DETECTOR
[Symbol]	[Symbol]	CONFIRMATION BEACON
[Symbol]	[Symbol]	UNINTERRUPTIBLE POWER SUPPLY
[Symbol]	[Symbol]	PEDESTRIAN SIGNAL HEAD WITH COUNTDOWN TIMER



NOTE:
THE TRAFFIC SIGNAL CONTROLLER EQUIPMENT FOR THIS PROJECT SHALL BE "ECONOLITE" TO MATCH THE EXISTING ADJACENT SYSTEM.

CABLE PLAN

SCHEDULE OF QUANTITIES

QUANTITY	UNIT	ITEM
40	SQ FT	PORTLAND CEMENT CONCRETE SIDEWALK 5 INCH
0.33	L SUM	TRAFFIC CONTROL AND PROTECTION, STANDARD 701501
0.33	L SUM	TRAFFIC CONTROL AND PROTECTION, STANDARD 701701
1	EACH	MAINTENANCE OF EXISTING TRAFFIC SIGNAL INSTALLATION
1	EACH	FULL-ACTUATED CONTROLLER AND TYPE IV CABINET, SPECIAL
1	EACH	TRANSCEIVER
1	EACH	UNINTERRUPTIBLE POWER SUPPLY
3	EACH	SIGNAL HEAD, L.E.D., 1-FACE, 3-SECTION, MAST ARM MOUNTED
1	EACH	SIGNAL HEAD, L.E.D., 1-FACE, 3-SECTION, BRACKET MOUNTED
3	EACH	SIGNAL HEAD, L.E.D., 1-FACE, 5-SECTION, BRACKET MOUNTED
2	EACH	SIGNAL HEAD, L.E.D., 1-FACE, 5-SECTION, MAST ARM MOUNTED
1	EACH	SIGNAL HEAD, L.E.D., 1-FACE, 3-SECTION OPTICALLY PROGRAMMED, MAST ARM MOUNTED
1	EACH	SIGNAL HEAD, L.E.D., 1-FACE, 3-SECTION OPTICALLY PROGRAMMED, BRACKET MOUNTED
2	EACH	SIGNAL HEAD, L.E.D., 1-FACE, 5-SECTION OPTICALLY PROGRAMMED, MAST ARM MOUNTED
1	EACH	SIGNAL HEAD, L.E.D., 2-FACE, 1-3 SECTION OPTICALLY PROGRAMMED, 1-5 SECTION OPTICALLY PROGRAMMED, BRACKET MOUNTED
8	EACH	TRAFFIC SIGNAL BACKPLATE, LOUVERED, ALUMINUM
13	EACH	INDUCTIVE LOOP DETECTOR
1	EACH	REMOVE EXISTING TRAFFIC SIGNAL EQUIPMENT
51.4	SQ FT	TEMPORARY INFORMATION SIGNING

I.D.O.T. TRAFFIC SIGNAL INSTALLATION ELECTRICAL SERVICE REQUIREMENTS					TOTAL WATTAGE
TYPE	NO. LAMPS	WATTAGE INCAND.	WATTAGE LED	% OPERATION	
SIGNAL (RED)	15		17	0.50	127.50
(YELLOW)	15		25	0.25	93.75
(GREEN)	15		15	0.25	56.25
ARROW	16		12	0.10	19.20
PED. SIGNAL	-		25	1.00	-
CONTROLLER	1		100	1.00	100.00
ILLUM. SIGN				0.05	-
FLASHER				0.05	-
ENERGY COSTS TO:					TOTAL= 396.70
CITY OF CHICAGO HEIGHTS					
1601 CHICAGO ROAD					
CHICAGO HEIGHTS, IL 60411					
ENERGY SUPPLY CONTACT:	STEVE FITZGERALD				
PHONE:	(708) 235-2327				
COMPANY:	COMMONWEALTH EDISON				

FOUNDATION (DEPTH)	FT. (m)	CABLE SLACK	FT. (m)	VERTICAL	FT. (m)
TYPE A - POST	4 (1.2)	HANDHOLE	6.5 (2.0)	ALL FOUNDATIONS	3.5 (1.0)
D - CONTROLLER	4 (1.2)	DOUBLE HANDHOLE	13 (4.0)	MAST ARM (L) POLE	20'HL-2=
E - M. ARM POLE	2 (1.0)	SIGNAL POST	2 (1.0)	6m+L-0.6m=	
24" (600mm)	10 (3.0)	CONTROLLER CAB.	1 (0.5)	BRACKET MOUNTED	13 (4.0)
30" (750mm)	15 (4.6)	FIBER OPTIC	13 (4.0)	PED. PUSHBUTTON	4 (1.2)
		ELECTRIC SERVICE	1 (0.5)	ELECTRIC SERVICE	13.5 (4.1)
		GROUND CABLE	1 (0.5)	SERVICE TO GROUND	13.5 (4.1)
				POST MOUNTED	6 (1.8)

STATE OF ILLINOIS
DEPARTMENT OF TRANSPORTATION

PROPOSED CABLE PLAN
JOE ORR ROAD AT CHICAGO ROAD AND AT BROADWAY AVENUE

SCALE: NTS SHEET NO. OF SHEETS STA. TO STA.

F.A. RTE.	SECTION	COUNTY	TOTAL SHEETS	SHEET NO.
	2009-009 T5	COOK	24	21
CONTRACT NO. 60G07				
FED. ROAD DIST. NO. [ILLINOIS] FED. AID PROJECT				

FILE NAME =	USER NAME = #USERS	DESIGNED - NB/TCM	REVISED -
P:\P-08-1600-4\Design\4.IDOT Partial Contract\6.Joe Orr Rd at Chicago Road\SH\SH02.DWG	Steve Fitzgerald	NB/TCM	-
PLOT SCALE = 1/8" = 1' IN.	CHECKED - NB/TCM	REVISED -	-
PLOT DATE = 1/27/2009	DATE - 01/23/2009	REVISED -	-