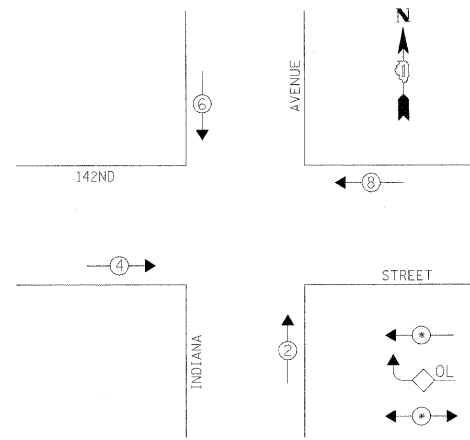


TEMPORARY CONTROLLER SEQUENCE



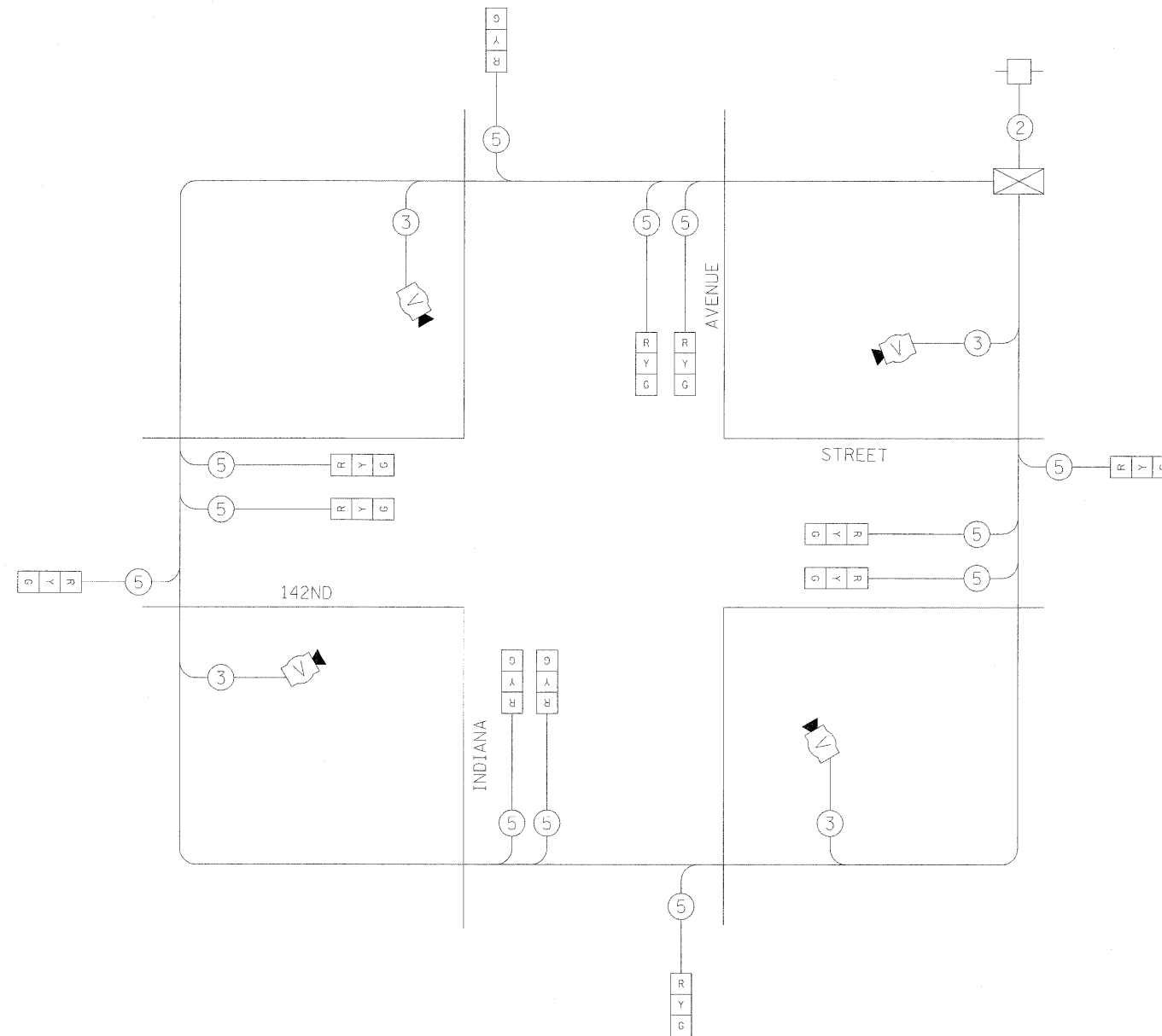
TEMPORARY PHASE DESIGNATION DIAGRAM

LEGEND

- ◀ ● ▶ DUAL ENTRY PHASE
- ◀ ● OL ▶ OVERLAP
- ◀ ● ▶ PEDESTRIAN PHASE
- * NUMBER REFERS TO ASSOCIATED PHASE

TEMPORARY CABLE DIAGRAM LEGEND

- [R] TEMPORARY TRAFFIC SIGNAL SECTION OR PEDESTRIAN SIGNAL SECTION, 12" (300 mm)
- [X] TEMPORARY CONTROLLER CABINET
- [] TEMPORARY SERVICE INSTALLATION
- (5) INDICATES NUMBER OF CONDUCTORS IN CABLE. ALL CONDUCTORS TO BE NUMBERED 14 AWG WIRE UNLESS OTHERWISE NOTED.
- ▶ EMERGENCY VEHICLE LIGHT DETECTOR
- CONFIRMATION BEACON
- PEDESTRIAN PUSHBUTTON DETECTOR
- [] VEHICLE DETECTOR, INDUCTION LOOP
- [] 12" (300 mm) PEDESTRIAN SIGNAL SECTION
- [] MICROWAVE VEHICLE SENSOR
- [V] VIDEO DETECTOR



TEMPORARY CABLE PLAN

I.D.O.T. TRAFFIC SIGNAL INSTALLATION ELECTRICAL SERVICE REQUIREMENTS					TOTAL WATTAGE
TYPE	NO. LAMPS	WATTAGE INCAND.	WATTAGE LED	% OPERATION	
SIGNAL (RED)	12		17	0.50	102.00
(YELLOW)	12		25	0.25	75.00
(GREEN)	12		15	0.25	45.00
ARROW	-		12	0.10	0.00
PED. SIGNAL	-		25	1.00	0.00
CONTROLLER	1		100	1.00	100.00
ILLUM. SIGN				0.05	-
FLASHER				0.05	-
ENERGY COSTS TO: VILLAGE OF DOLTON 14014 PARK AVENUE DOLTON, IL 60419					TOTAL= 322.00
ENERGY SUPPLY CONTACT: TONY ESCALANTE PHONE: (708) 235-2328 COMPANY: COMMONWEALTH EDISON					

STATE OF ILLINOIS
DEPARTMENT OF TRANSPORTATION

TEMPORARY CABLE PLAN
INDIANA AVENUE AND 142ND STREET

F.A.U. RTE. 2906	SECTION 2009-012 TS	COUNTY COOK	TOTAL SHEETS 11	SHEET NO. 8
FED. ROAD DIST. NO. ILLINOIS FED. AID PROJECT			CONTRACT NO. 60C10	

SCALE: NTS SHEET NO. OF SHEETS STA. TO STA.