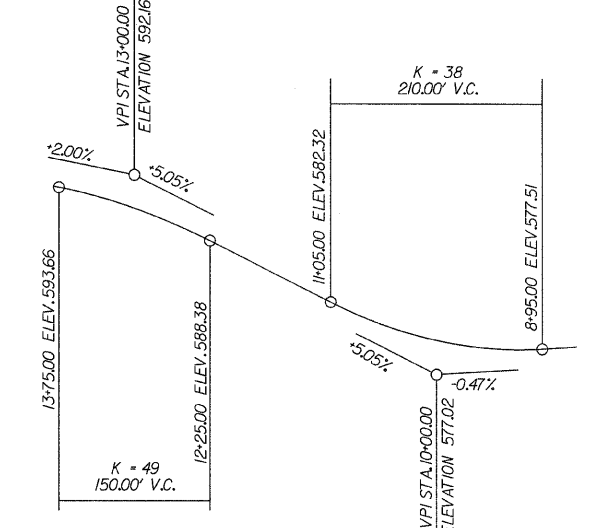
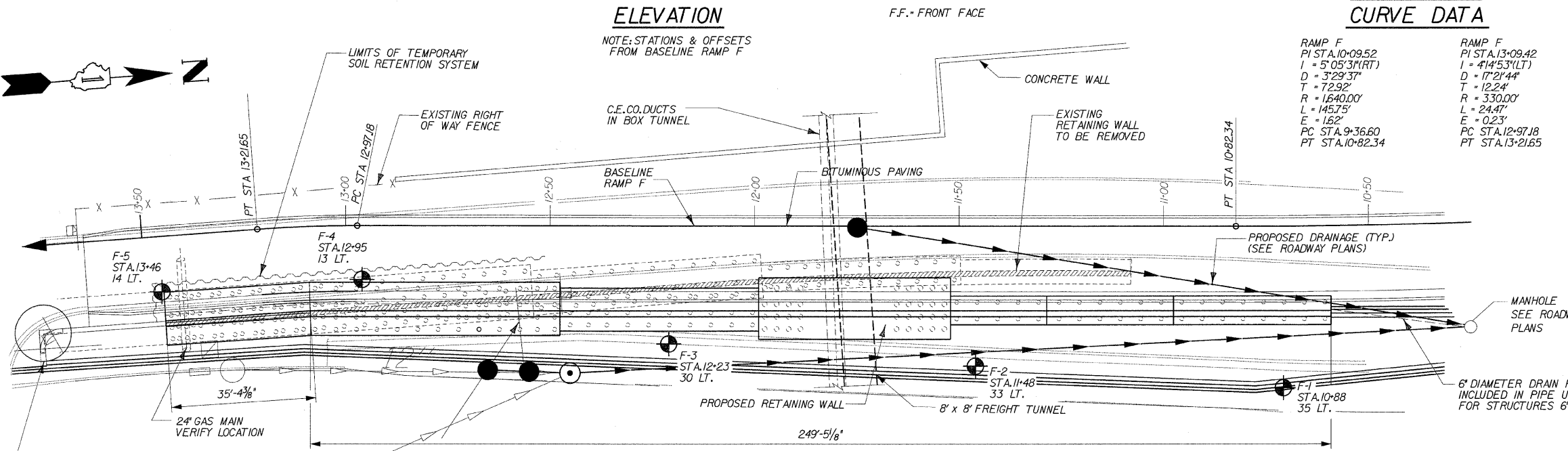


BENCH MARK
BM 903 - N.E. ANCHOR BOLT OF HIGH MAST LIGHT POLE LOCATED FROM MAINLINE STATION EBL AT STA. 28+10 - 96 FT. LEFT; ELEV. = 583.59

EXISTING STRUCTURE NO. 016-W807
1-90/94 RAMP F - JACKSON BLVD. EXIT RAMP BUILT IN 1957, CONSISTS OF CAST-IN-PLACE CONCRETE RETAINING WALL SUPPORTED ON CONCRETE PILING.

PROPOSED IMPROVEMENTS
EXISTING STRUCTURE TO BE PARTIALLY REMOVED AND REPLACED WITH A CAST-IN-PLACE CONCRETE T-TYPE RETAINING WALL SUPPORTED ON 14" DIAMETER METAL SHELL PILES. NO SALVAGE.



TOTAL BILL OF MATERIAL		
ITEM	UNIT	QUANTITY
CONCRETE STRUCTURES	CU YD	527.0
TEMPORARY SOIL RETENTION SYSTEM	SQ FT	2,300
CONCRETE REMOVAL	CU YD	360
REINFORCEMENT BARS	POUND	40,780
REINFORCEMENT BARS, EPOXY COATED	POUND	10,100
STRUCTURE EXCAVATION	CU YD	480
FURNISHING METAL SHELL PILES 14" x 0.250"	FOOT	14,325
DRIVING PILES	FOOT	14,325
TEST PILE METAL SHELLS	EACH	2
GEOCOMPOSITE WALL DRAIN	SQ YD	344
PIPE UNDERDRAINS FOR STRUCTURES 6"	FOOT	285
RUSTICATION FINISH	SQ FT	2,685
INSTALL DECORATIVE STEEL GUARDRAIL	FOOT	284
INSTALL DECORATIVE STEEL FASCIA	FOOT	258
EMBEDDED PLATE, GUARDRAIL UPRIGHT, EXPANSION JOINT	EACH	10
EMBEDDED PLATE, GUARDRAIL UPRIGHT	EACH	40
REPAIR OF FASCIA PANELS, EXIT RAMP F	LS	1

APPROVED
FOR STRUCTURAL ADEQUACY ONLY

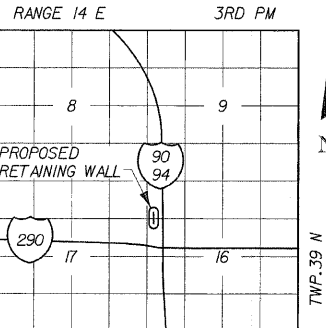
Ralph E. Anderson
ENGINEER OF BRIDGES AND STRUCTURES

DESIGN SPECIFICATIONS
2002 AASHTO SPECIFICATIONS FOR HIGHWAY BRIDGES

DESIGN STRESSES
LOADINGS
EQUIVALENT FLUID SOIL PRESSURE = 40 pcf
TRAFFIC SURCHARGE PRESSURE = 240 pcf
F^c = 3,500 PSI (CONCRETE)
F_y = 60,000 PSI (REINFORCEMENT)

GENERAL NOTES

- REINFORCEMENT BARS SHALL CONFORM TO THE REQUIREMENTS OF ASTM A 706 GR 60. SEE SPECIAL PROVISIONS.
- REINFORCEMENT BARS DESIGNATED (E) SHALL BE EPOXY COATED.
- PLAN DIMENSIONS AND DETAILS RELATIVE TO EXISTING STRUCTURES HAVE BEEN TAKEN FROM FIELD MEASUREMENTS AND ARE SUBJECT TO NOMINAL CONSTRUCTION VARIATIONS. IT SHALL BE THE CONTRACTOR'S RESPONSIBILITY TO VERIFY SUCH DIMENSIONS AND DETAILS IN THE FIELD AND MAKE NECESSARY APPROVED ADJUSTMENTS PRIOR TO CONSTRUCTION OR ORDERING OF MATERIALS. SUCH VARIATIONS SHALL NOT BE CAUSE FOR ADDITIONAL COMPENSATION FOR A CHANGE IN THE SCOPE OF THE WORK, HOWEVER, THE CONTRACTOR WILL BE PAID FOR THE QUANTITY ACTUALLY FURNISHED AT THE UNIT PRICE FOR THE WORK.
- REMOVAL OF THE EXISTING RAMP F RETAINING WALL, INCLUDING EXISTING PILE TOPS AND BACKFILLING WITH GRANULAR MATERIAL TO EL. 571.92, TO BE INCLUDED IN CONCRETE REMOVAL.
- THE CONTRACTOR SHALL DRIVE TWO METAL SHELL PILES 14" DIAMETER TEST PILES IN A PERMANENT LOCATION NEAR BORINGS F-5 AND F-3 AS INDICATED ON THE PLANS AND AS DIRECTED BY THE ENGINEER BEFORE ORDERING THE REMAINDER OF PILES.
- A CANTILEVERED SHEET PILING DESIGN DOES NOT APPEAR FEASIBLE AND ADDITIONAL MEMBERS OR OTHER RETENTION SYSTEMS MAY BE NECESSARY. THE CONTRACTOR SHALL SUBMIT A TEMPORARY SOIL RETENTION SYSTEM DESIGN INCLUDING PLAN DETAILS AND CALCULATIONS FOR REVIEW AND ACCEPTANCE BY THE ENGINEER.
- PRIOR TO INSTALLING THE PILING, THE CONTRACTOR SHALL VERIFY THE LOCATION AND DIMENSIONS SHOWN IN THE PLANS FOR THE GAS LINE AND BOX TUNNELS. FOR THE GAS LINE AND THE C.E. DUCT, PILING SHALL BE INSTALLED WITH A MINIMUM OF TWO (2) FEET CLEARANCE. FOR THE FREIGHT TUNNEL, THE CONTRACTOR SHALL COORDINATE WITH THE CITY OF CHICAGO DEPARTMENT OF ENGINEERING, J.J. MADIA AT 312-744-3920 FOR APPROVED INSTALLATION TECHNIQUES. AT A MINIMUM THE PILES WITHIN TEN (10) FEET OF THE FREIGHT TUNNEL SHALL BE PRE-DRILLED. COST OF PREDRILLING PILES AND ANY PERMITTING REQUIREMENTS FOR THE CITY OF CHICAGO SHALL BE INCLUDED IN THE UNIT PRICE BID FOR DRIVING PILES. ANY DAMAGE TO THE TUNNELS OR GAS LINE AS A RESULT OF THE CONTRACTOR'S OPERATIONS SHALL BE REPAIRED TO "LIKE NEW" CONDITIONS, BY THE CONTRACTOR, AT NO COST TO THE DEPARTMENT. "LIKE NEW" CONDITIONS OF THE REPAIRS MUST BE ACCEPTED BY THE ENGINEER.
- ALL CONSTRUCTION JOINTS SHALL BE BONDED.



DESIGNED	DPW
CHECKED	JMM
DRAWN	PH
CHECKED	JMM

DLZ ILLINOIS, L.L.C.
ARLINGTON HEIGHTS, ILLINOIS

Signed: *John J. Conboy*
Date: April 10th, 2009
Expiration Date: 11/30/10



DLZ 85 W. Algonquin Rd. Ste. 220
Arlington Heights IL 60005

REVISIONS	
NAME	DATE
ADDENDUM Δ	4/10/09

RETAINING WALL RAMP F
GENERAL PLAN & ELEVATION
1-90/94 KENNEDY EXPRESSWAY
(HUBBARDS CAVE TO I-290)
SECT. (202.6 - 2P, ETC, 1415 & 1517) R-7
STATION 13+45 LT 22' TO 10+59 LT 22'
COOK COUNTY
STRUCTURE NUMBER 016-W807

10-Apr-2009 13:38 s:\Dept\Structures\301099 190 94-retwall\ILL 190 94-RAMP\F\DGNFILES\01-Layout\RampF.dgn