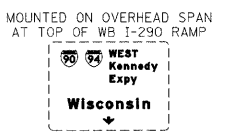
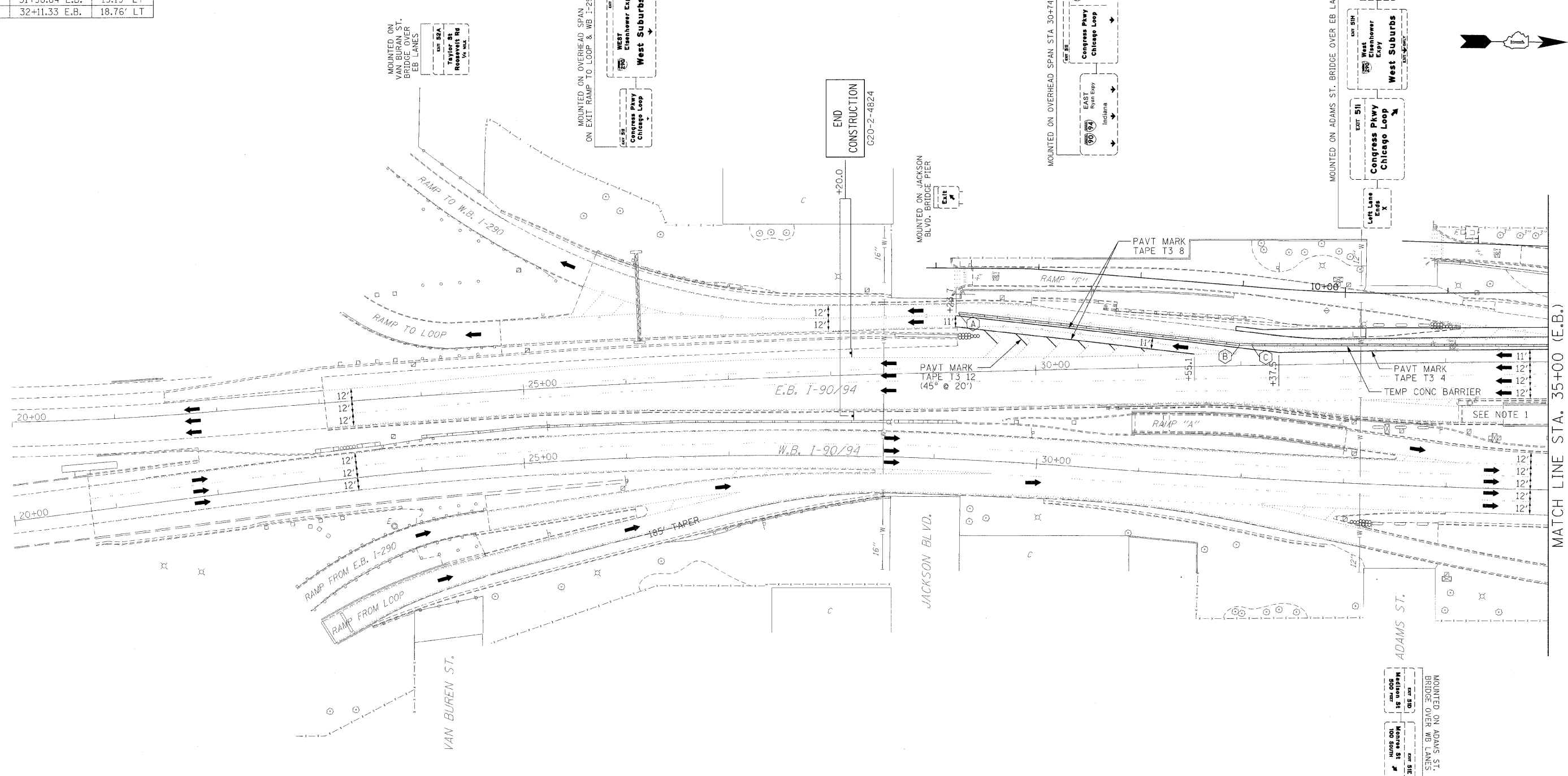


TEMPORARY CONCRETE BARRIER LAYOUT (TO FF)

LOCATION	STATION	OFFSET
A	29+26.49 E.B.	56.64' LT
B	31+98.84 E.B.	19.19' LT
C	32+11.33 E.B.	18.76' LT

PLAN	SURVEYED	BY	DATE
	NOTE BOOK		
	ALIGNED		
	CHECKED		
	NO. OF PAGES		
	CHECKED		
	NO.		

PROFILE	PROPOSED	BY	DATE
	GRADES		
	CHECKED		
	NO. NOTED		
	BY		
	NO.		



WORK ZONE SPEED LIMIT SIGN ASSEMBLY, SIGNS W2-1115(0)-3618, R2-1-3648, W2-1113(0)-3612, AND R2-1106-3618, AS SHOWN ON STANDARD 701402 SHALL NOT BE PLACED

NOTES:
1.) THE ELEVATED PORTION OF RAMP HAS ALREADY BEEN REMOVED AND THE RETAINED EARTH PORTION IS ALL THAT REMAINS.

- LEGEND**
- ⚡ TYPE II BARRICADE, DRUM OR VERTICAL BARRICADE WITH STEADY BURN MONODIRECTIONAL LIGHT
 - ⚡ DIRECTION INDICATOR BARRICADE WITH STEADY BURN MONODIRECTIONAL LIGHT
 - ⦿ DRUM WITH STEADY BURNING MONODIRECTIONAL LIGHT
 - ➔ ARROW BOARD
 - ⚡ SIGN
 - ▭ CONSTRUCTION AREA

ILLINOIS DEPARTMENT OF TRANSPORTATION

MAINTENANCE OF TRAFFIC
I-90/94 KENNEDY EXPRESSWAY
STAGE 1 LANE CLOSURE
STA. 20+00 TO STA. 35+00

SCALE : 1" = 50'
DATE : 02/06/09
DRAWN BY : BEC
CHECKED BY : GB