

| | | | | |
|---------------------|-------------------------------|------------------|--------------------|-----------|
| F.A.I. RTE. | SECTION | COUNTY | TOTAL SHEETS | SHEET NO. |
| 90/94 | 02026-2P, ETC. 1415 & 1517R-7 | COOK | 246 | 27 |
| STA. 35+00 | | TO STA. 50+00 | | |
| FED. ROAD DIST. NO. | ILLINOIS | FED. AID PROJECT | CONTRACT NO. 62408 | |

TEMPORARY CONCRETE BARRIER LAYOUT (TO FF)

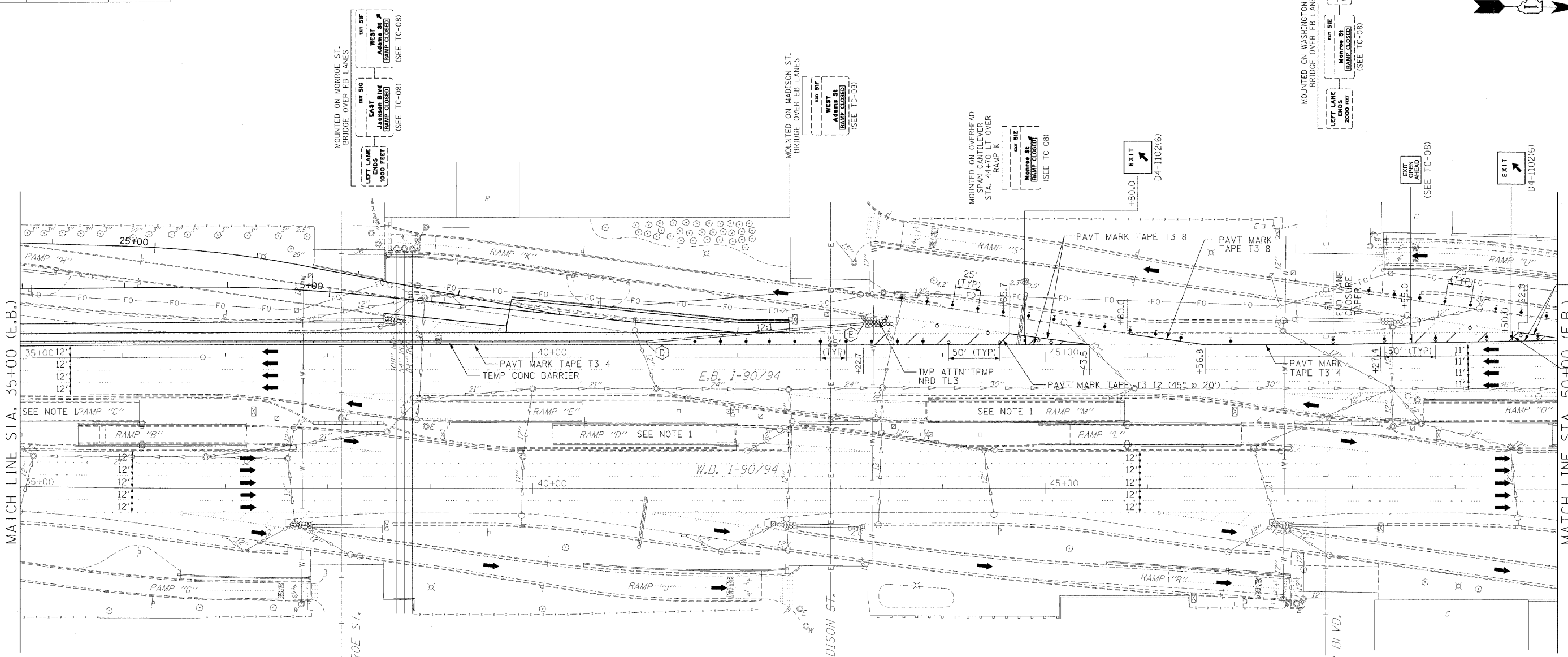
| LOCATION | STATION | OFFSET |
|----------|---------------|-----------|
| D | 41+10.98 E.B. | 14.00' LT |
| E | 43+22.74 E.B. | 31.65' LT |

PLAN

| | | |
|--------------------|----|------|
| SURVEYED | BY | DATE |
| ALIGNED | | |
| CHECKED | | |
| NO. OF WAY CHECKED | | |
| DATE FILED | | |

PROFILE

| | | |
|--------------------------|----|------|
| SURVEYED | BY | DATE |
| B.M. NOTED | | |
| GRADES CHECKED | | |
| STRUCTURE NOTATIONS OK'D | | |
| NO. | | |



MATCH LINE STA. 35+00 (E.B.)

MATCH LINE STA. 50+00 (E.B.)

MOUNTED ON MONROE ST. BRIDGE OVER EB LANES
 LEFT LANE ENDS 1000 FEET (SEE TC-08)
 EAST Jackson Blvd BRIDGE CLOSED (SEE TC-08)
 WEST Adams St BRIDGE CLOSED (SEE TC-08)

MOUNTED ON MADISON ST. BRIDGE OVER EB LANES
 WEST Adams St BRIDGE CLOSED (SEE TC-08)

MOUNTED ON OVERHEAD SPAN CANTILEVER STA. 44+70 LT OVER RAMP K
 MONROE ST BRIDGE CLOSED (SEE TC-08)

MOUNTED ON WASHINGTON BLVD. BRIDGE OVER EB LANES
 LEFT LANE ENDS 2000 FEET (SEE TC-08)
 MONROE ST BRIDGE CLOSED (SEE TC-08)
 MADISON ST BRIDGE CLOSED (SEE TC-08)

MOUNTED ON MONROE ST. BRIDGE OVER WB LANES
 EAST Washington Blvd BRIDGE CLOSED (SEE TC-08)
 MADISON ST BRIDGE CLOSED (SEE TC-08)

OVERHEAD CANTILEVER MOUNTED AT STA. 41+00 RT OF WB LANES
 EAST Washington Blvd BRIDGE CLOSED (SEE TC-08)

MOUNTED ON MADISON ST. BRIDGE OVER WB LANES
 WEST Washington Blvd BRIDGE CLOSED (SEE TC-08)

MOUNTED ON WASHINGTON BLVD. BRIDGE OVER WB LANES
 WEST Washington Blvd BRIDGE CLOSED (SEE TC-08)

NOTES:
 1.) THE ELEVATED PORTION OF RAMP HAS ALREADY BEEN REMOVED AND THE RETAINED EARTH PORTION IS ALL THAT REMAINS.

LEGEND

- ⊕ TYPE II BARRICADE, DRUM OR VERTICAL BARRICADE WITH STEADY BURN MONODIRECTIONAL LIGHT
- ⊕ DIRECTION INDICATOR BARRICADE WITH STEADY BURN MONODIRECTIONAL LIGHT
- ⊕ DRUM WITH STEADY BURNING MONODIRECTIONAL LIGHT
- ↑ ARROW BOARD
- ⊕ SIGN
- ▨ CONSTRUCTION AREA

ILLINOIS DEPARTMENT OF TRANSPORTATION
MAINTENANCE OF TRAFFIC
 I-90/94 KENNEDY EXPRESSWAY
 STAGE 1 LANE CLOSURE
 STA. 35+00 TO STA. 50+00

SCALE : 1" = 50'
 DATE : 02/06/09
 DRAWN BY : BEC
 CHECKED BY : GB

