

F.A.I. RTE.	SECTION	COUNTY	TOTAL SHEETS	SHEET NO.
90/94	0202.6-2P, ETC, 1415 & 1517R-7	COOK	246	28
STA. 50+00		TO STA. 65+00		
FED. ROAD DIST. NO.		ILLINOIS FED. AID PROJECT		
CONTRACT NO. 62408				

11'-0" 2'-0"  
RAMP CLOSED

12" BLACK LETTERS ON ORANGE

18'-6"  
13'-0"  
14"  
16"  
12"  
16"  
16"  
40"  
16"  
14"

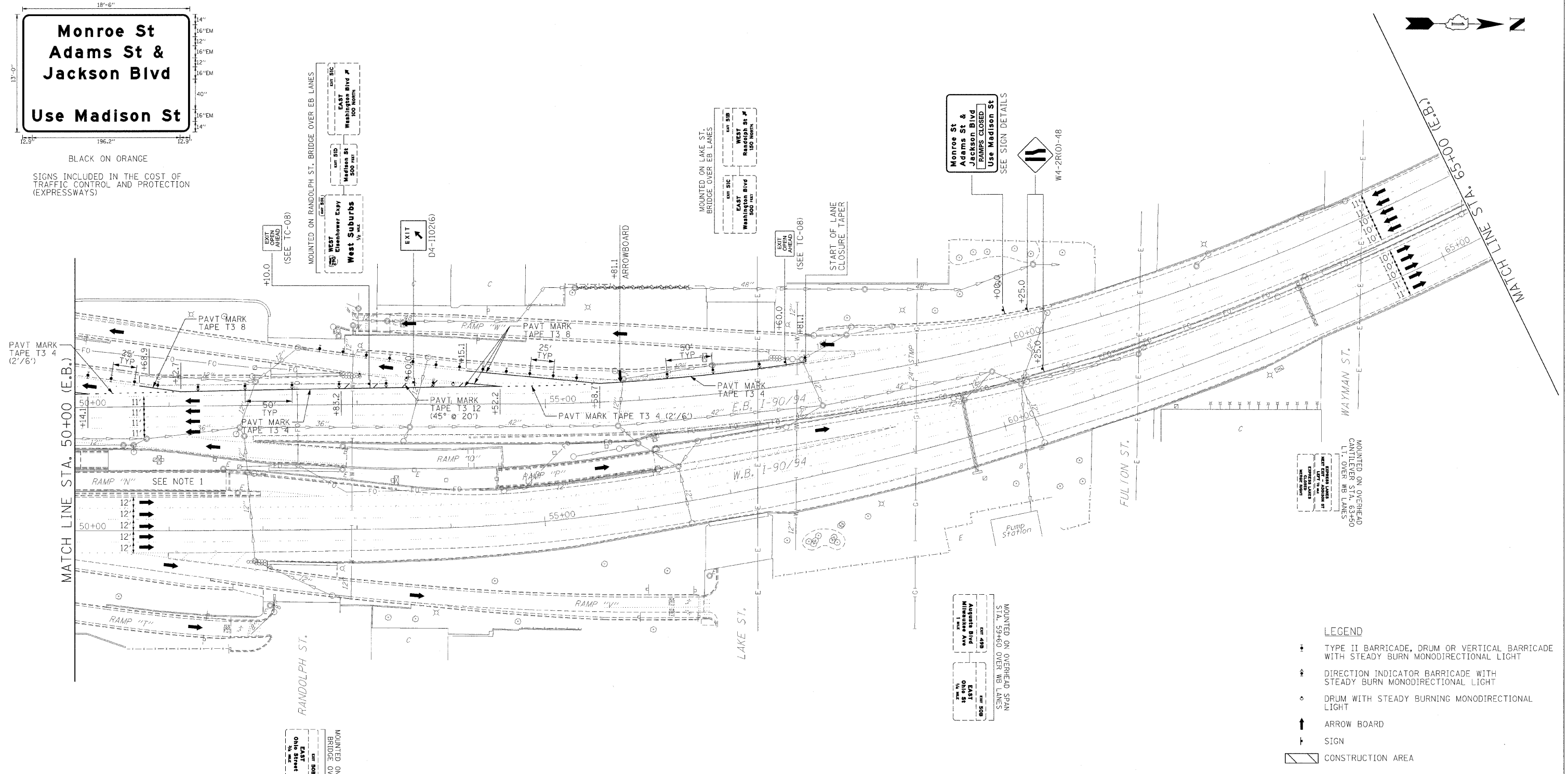
**Monroe St  
Adams St &  
Jackson Blvd  
Use Madison St**

BLACK ON ORANGE

SIGNS INCLUDED IN THE COST OF TRAFFIC CONTROL AND PROTECTION (EXPRESSWAYS)

PLAN	DATE	BY
REVISIONS		
NO.	DESCRIPTION	DATE
1	ALIGNMENT CHECKED	
2	PLOTTED	
3	NOTES CHECKED	
4	CADD FILE NAME	

PROFILE	DATE	BY
REVISIONS		
NO.	DESCRIPTION	DATE
1	BRIDGE CHECKED	
2	STRUCTURE NOTED THIS OFFICE	



- LEGEND**
- ⊙ TYPE II BARRICADE, DRUM OR VERTICAL BARRICADE WITH STEADY BURN MONODIRECTIONAL LIGHT
  - ⚡ DIRECTION INDICATOR BARRICADE WITH STEADY BURN MONODIRECTIONAL LIGHT
  - ⊙ DRUM WITH STEADY BURNING MONODIRECTIONAL LIGHT
  - ↑ ARROW BOARD
  - ↑ SIGN
  - ▨ CONSTRUCTION AREA

NOTES:  
1.) THE ELEVATED PORTION OF RAMP HAS ALREADY BEEN REMOVED AND THE RETAINED EARTH PORTION IS ALL THAT REMAINS.

ILLINOIS DEPARTMENT OF TRANSPORTATION  
**MAINTENANCE OF TRAFFIC**  
I-90/94 KENNEDY EXPRESSWAY  
STAGE 1 LANE CLOSURE  
STA. 50+00 TO STA. 65+00

SCALE : 1" = 50' DRAWN BY : BC  
DATE : 02/27/09 CHECKED BY : GB



3-27-09