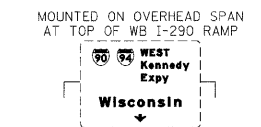
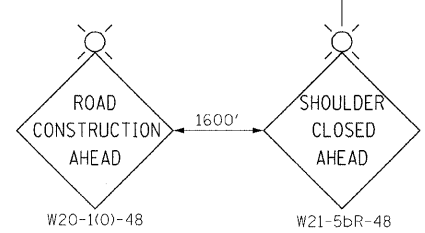
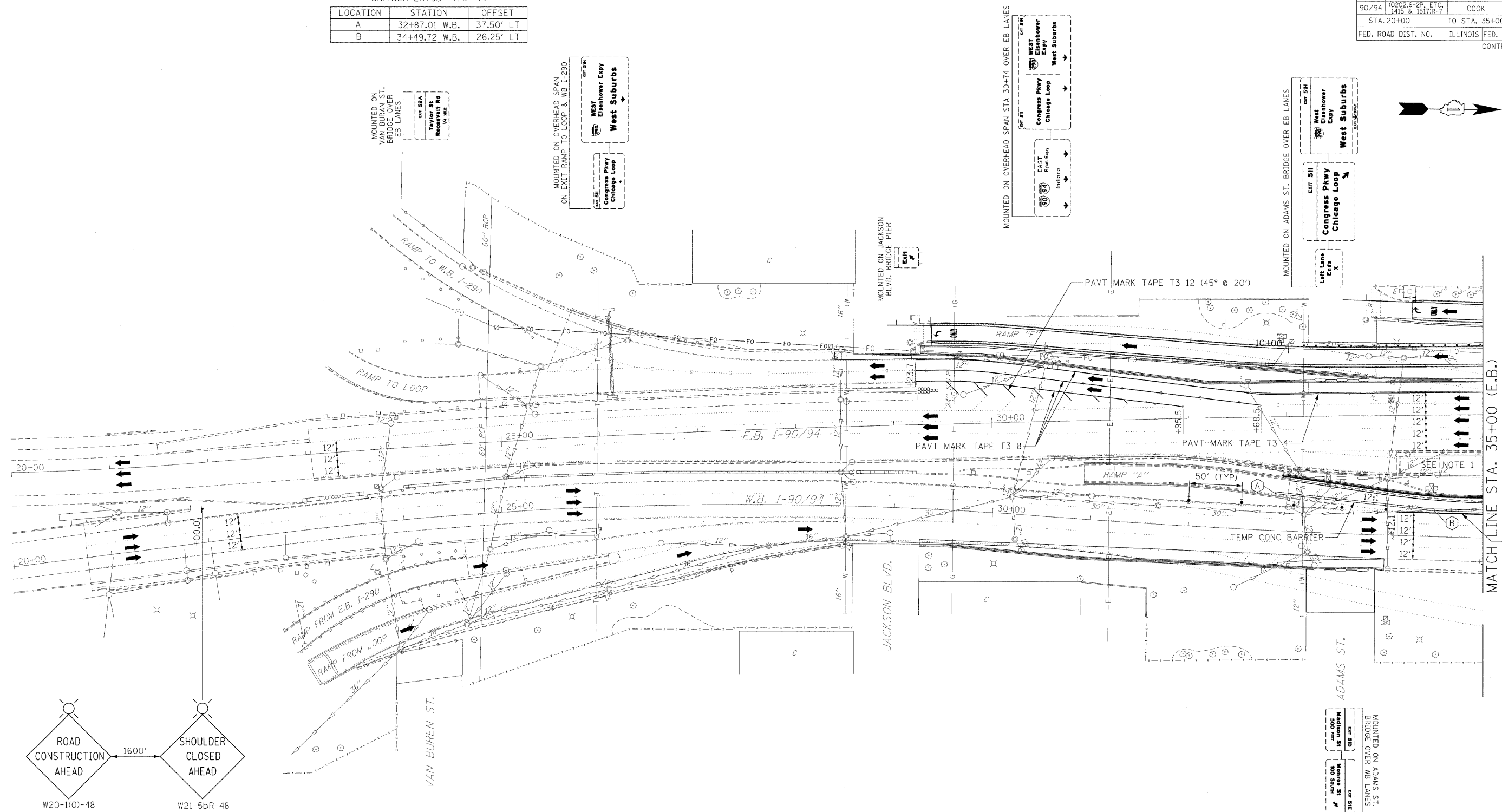


F.A.I. RTE.	SECTION	COUNTY	TOTAL SHEETS	SHEET NO.
90/94	0202.6-2P, ETC, 1415 & 1517R-7	COOK	246	37
STA. 20+00		TO STA. 35+00		
FED. ROAD DIST. NO.		ILLINOIS	FED. AID PROJECT	
CONTRACT NO. 62408				

TEMPORARY CONCRETE BARRIER LAYOUT (TO FF)

LOCATION	STATION	OFFSET
A	32+87.01 W.B.	37.50' LT
B	34+49.72 W.B.	26.25' LT



- LEGEND**
- ◆ TYPE II BARRICADE, DRUM OR VERTICAL BARRICADE WITH STEADY BURN MONODIRECTIONAL LIGHT
 - ◆ DIRECTION INDICATOR BARRICADE WITH STEADY BURN MONODIRECTIONAL LIGHT
 - DRUM WITH STEADY BURNING MONODIRECTIONAL LIGHT
 - ↑ ARROW BOARD
 - † SIGN
 - ▨ CONSTRUCTION AREA

ILLINOIS DEPARTMENT OF TRANSPORTATION
MAINTENANCE OF TRAFFIC
 I-90/94 KENNEDY EXPRESSWAY
 STAGE 2A
 STA. 20+00 TO STA. 35+00
 SCALE : 1" = 50'
 DATE : 02/06/09
 DRAWN BY : BEC
 CHECKED BY : GB

PLAN

DATE	BY

SUBMITTED BY: [Signature]
 ALTERNATE CHECKED BY: [Signature]
 DATE: [Date]
 NOTE BOOK NO. [Number]
 PLOTTED FILE NAME: [Name]

PROFILE

DATE	BY

SUBMITTED BY: [Signature]
 GRADES CHECKED BY: [Signature]
 DATE: [Date]
 NOTE BOOK NO. [Number]
 PLOTTED FILE NAME: [Name]