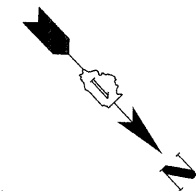
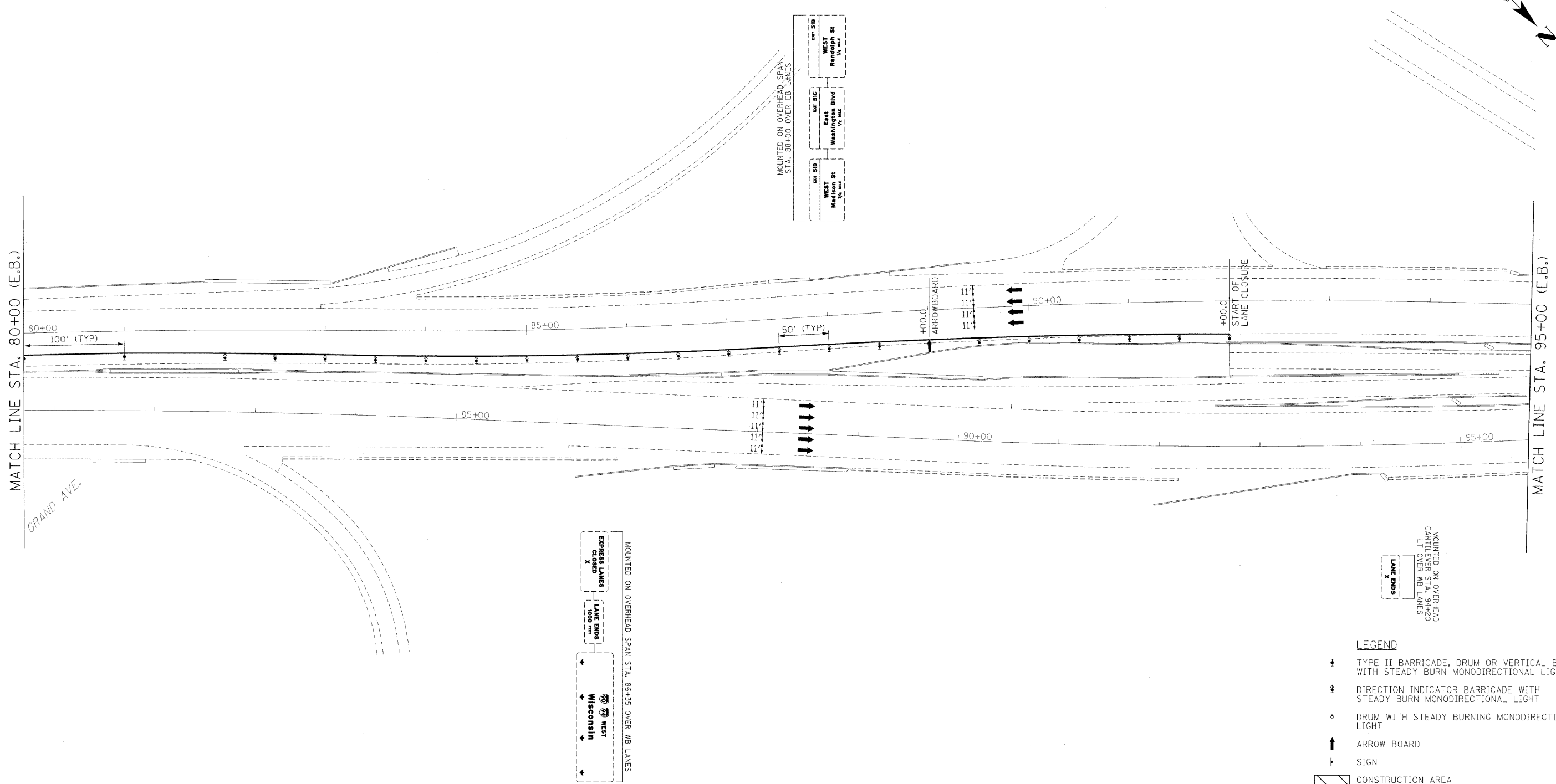


F.A.I. RTE.	SECTION	COUNTY	TOTAL SHEETS	SHEET NO.
90/94	(101.6 (P,2P) & 0202.6 (P) ET AL	COOK	246	41
STA. 80+00		TO STA. 95+00		
FED. ROAD DIST. NO.		ILLINOIS FED. AID PROJECT		



PLAN	DATE
SURVEYED BY	
ALIGNED BY	
CHECKED BY	
DATE	

PROFILE	DATE
SURVEYED BY	
CHECKED BY	
DATE	



- LEGEND**
- ⚡ TYPE II BARRICADE, DRUM OR VERTICAL BARRICADE WITH STEADY BURN MONODIRECTIONAL LIGHT
  - ⚡ DIRECTION INDICATOR BARRICADE WITH STEADY BURN MONODIRECTIONAL LIGHT
  - ⦿ DRUM WITH STEADY BURNING MONODIRECTIONAL LIGHT
  - ↑ ARROW BOARD
  - ⚡ SIGN
  - ▨ CONSTRUCTION AREA

ILLINOIS DEPARTMENT OF TRANSPORTATION  
**MAINTENANCE OF TRAFFIC**  
 I-90/94 KENNEDY EXPRESSWAY  
 STAGE 2A  
 STA. 80+00 TO STA. 95+00  
 SCALE : 1" = 50'  
 DATE : 02/06/09  
 DRAWN BY : BEC  
 CHECKED BY : GB

