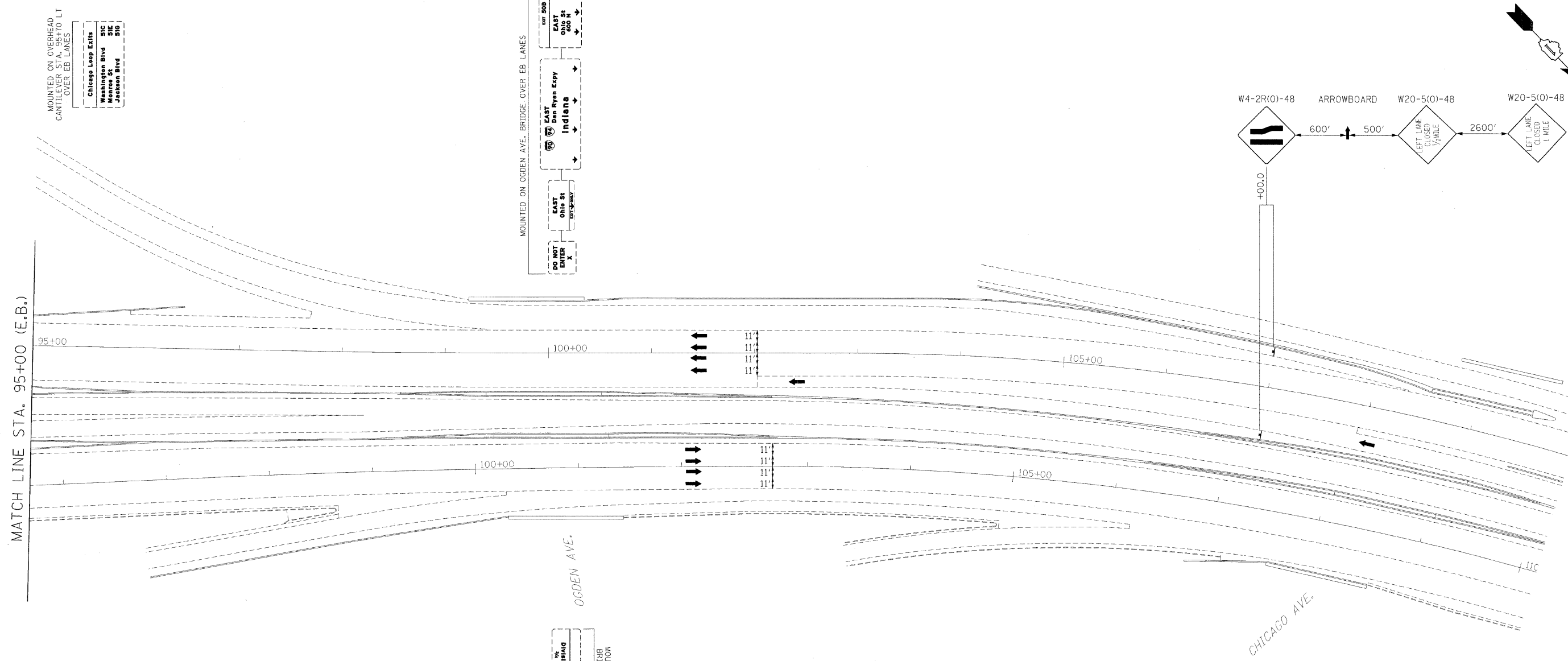


F.A.I. RTE.	SECTION	COUNTY	TOTAL SHEETS	SHEET NO.
90/94	(101.6 (1P,2P) & 0202.6 (1P) ET AL)	COOK	246	42
STA. 95+00		TO STA. 110+00		
FED. ROAD DIST. NO.		ILLINOIS FED. AID PROJECT		

PLAN	DATE	BY
SURVEYED		
ALIGNED		
CHECKED		
NOTE BOOK NO.		

PROFILE	DATE	BY
SURVEYED		
GRADES CHECKED		
NOTE BOOK NO.		



MOUNTED ON OVERHEAD CANTILEVER STA. 95+70 LT OVER EB LANES

Chicago Loop Exit
Washington Blvd
Jackson Blvd

MOUNTED ON OGDEN AVE. BRIDGE OVER EB LANES

DO NOT ENTER
EAST OHIO ST

EAST Dan Ryan Expwy
Indiana

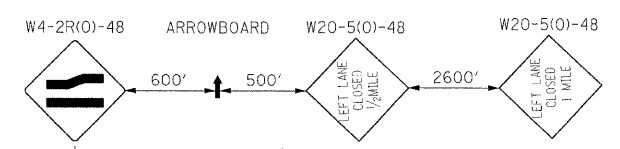
EAST OHIO ST

MOUNTED ON OGDEN AVE. BRIDGE OVER WB LANES

DO NOT ENTER
WEST OHIO ST

WEST Dan Ryan Expwy
Indiana

WEST OHIO ST



- LEGEND**
- ⊞ TYPE II BARRICADE, DRUM OR VERTICAL BARRICADE WITH STEADY BURN MONODIRECTIONAL LIGHT
 - ⊞ DIRECTION INDICATOR BARRICADE WITH STEADY BURN MONODIRECTIONAL LIGHT
 - ⊞ DRUM WITH STEADY BURNING MONODIRECTIONAL LIGHT
 - ↑ ARROW BOARD
 - ⊞ SIGN
 - ▨ CONSTRUCTION AREA

ILLINOIS DEPARTMENT OF TRANSPORTATION

MAINTENANCE OF TRAFFIC

I-90/94 KENNEDY EXPRESSWAY
STAGE 2A
STA. 95+00 TO STA. 110+00

SCALE : 1" = 50'
DATE : 02/06/09

DRAWN BY : BEC
CHECKED BY : GB