

F.A.I. RTE.	SECTION	COUNTY	TOTAL SHEETS	SHEET NO.
90/94	02026-2P, ETC, 1415 & 1517R-7	COOK	246	43
STA. 5+00		TO STA. 20+00		
FED. ROAD DIST. NO.	ILLINOIS FED. AID PROJECT			
CONTRACT NO. 62408				

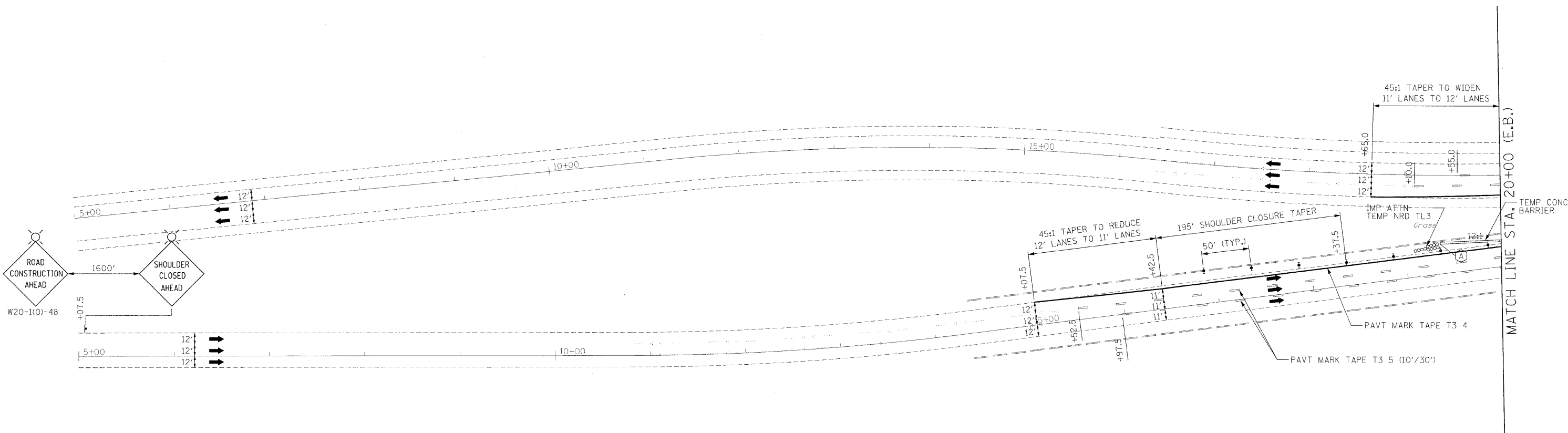
TEMPORARY CONCRETE BARRIER LAYOUT (TO FF)

LOCATION	STATION	OFFSET
A	19+37.89 W.B.	31.74' LT



PLAN	SURVEYED	BY	DATE
	NOTE BOOK		
	ALIGNMENT CHECKED		
	RT. OF WAY CHECKED		
	PAID FILE NAME		
	NO.		

PROFILE	SURVEYED	BY	DATE
	NOTE BOOK		
	GRADES CHECKED		
	STRUCTURE NOTATIONS CHECKED		
	NO.		



LEGEND

- ⊩ TYPE II BARRICADE, DRUM OR VERTICAL BARRICADE WITH STEADY BURN MONODIRECTIONAL LIGHT
- ⊩ DIRECTION INDICATOR BARRICADE WITH STEADY BURN MONODIRECTIONAL LIGHT
- ⊩ DRUM WITH STEADY BURNING MONODIRECTIONAL LIGHT
- ↑ ARROW BOARD
- ⊩ SIGN
- ▨ CONSTRUCTION AREA

ILLINOIS DEPARTMENT OF TRANSPORTATION
MAINTENANCE OF TRAFFIC
 I-90/94 KENNEDY EXPRESSWAY
 STAGE 2B
 STA. 5+00 TO STA. 20+00

SCALE : 1" = 50'
 DATE : 02/06/09
 DRAWN BY : BEC
 CHECKED BY : GB

