

F.A.I. RTE.	SECTION	COUNTY	TOTAL SHEETS	SHEET NO.
90/94	0202.6-2P, ETC, 1415 & 1517R-7	COOK	246	46
STA. 50+00		TO STA. 65+00		
FED. ROAD DIST. NO.		ILLINOIS FED. AID PROJECT		
CONTRACT NO. 62408				

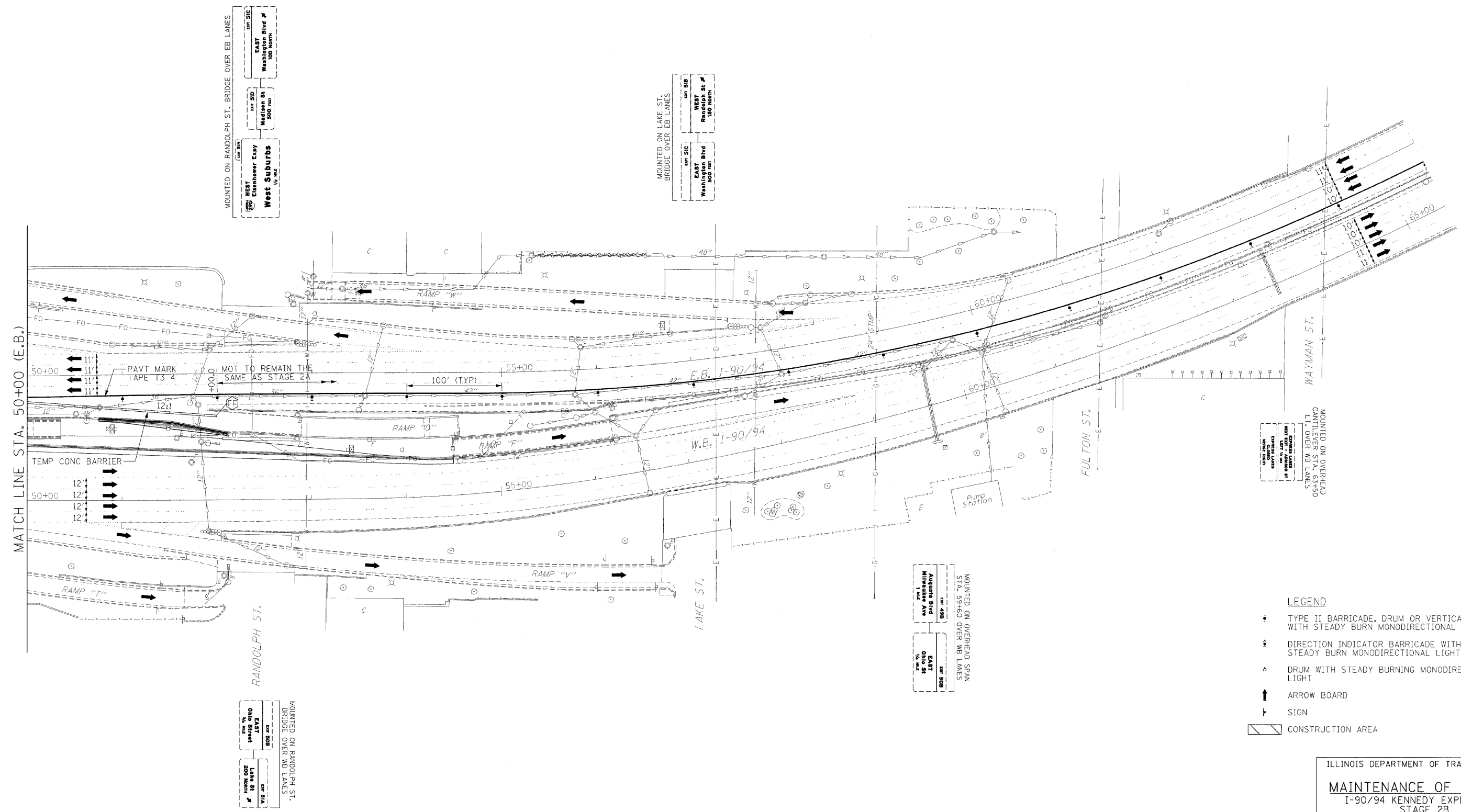


TEMPORARY CONCRETE BARRIER LAYOUT (TO FF)

LOCATION	STATION	OFFSET
FF	51+99.33 E.B.	43.67' RT

PLAN	SURVEYED	DATE
NOTE BOOK NO.	ALIGNED	BY
	CHECKED	
	PT. OF WAY CHECKED	
	PROP. FILE NAME	

PROFILE	REVIEWED	DATE
NOTE BOOK NO.	GRADES CHECKED	BY
	BAW NOTED	
	FIGURE NOTATION CHD	



- LEGEND**
- ⚡ TYPE II BARRICADE, DRUM OR VERTICAL BARRICADE WITH STEADY BURN MONODIRECTIONAL LIGHT
 - ⚡ DIRECTION INDICATOR BARRICADE WITH STEADY BURN MONODIRECTIONAL LIGHT
 - ⊙ DRUM WITH STEADY BURNING MONODIRECTIONAL LIGHT
 - ↑ ARROW BOARD
 - ⊥ SIGN
 - ▨ CONSTRUCTION AREA

ILLINOIS DEPARTMENT OF TRANSPORTATION
MAINTENANCE OF TRAFFIC
 I-90/94 KENNEDY EXPRESSWAY
 STAGE 2B
 STA. 50+00 TO STA. 65+00

SCALE : 1" = 50'
 DATE : 02/06/09
 DRAWN BY : BEC
 CHECKED BY : GB

