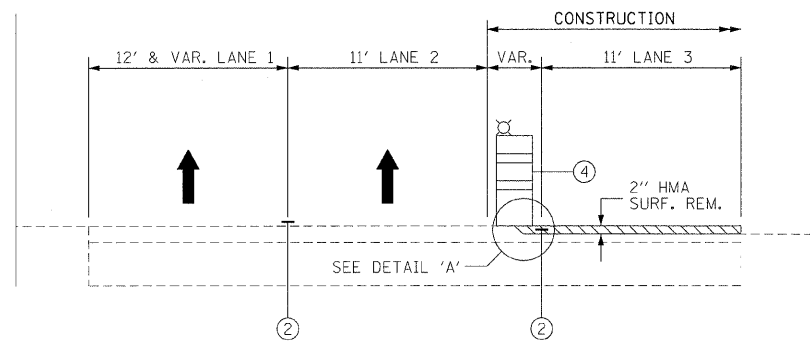


F.A.I. RTE.	SECTION	COUNTY	TOTAL SHEETS	SHEET NO.
90/94	0202.6-2P, ETC, 1415 & 1517R-7	COOK	246	47
STA.		TO STA.		
FED. ROAD DIST. NO.		ILLINOIS FED. AID PROJECT		
CONTRACT NO. 62408				

DATE	BY
SURVEYED	ALIGNED
NOTED	CHECKED
PLAN	NO. OF MAY CHECKED
	NO. FILE NAME

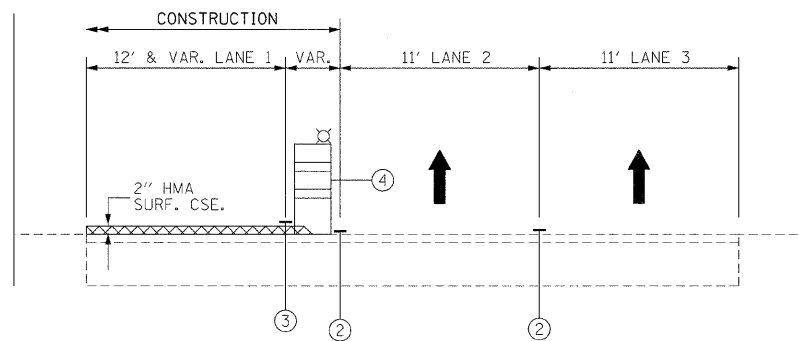
DATE	BY
SURVEYED	ALIGNED
NOTED	CHECKED
PROFILE	NO. OF MAY CHECKED
	NO. FILE NAME

SYMM. ABOUT MEDIAN



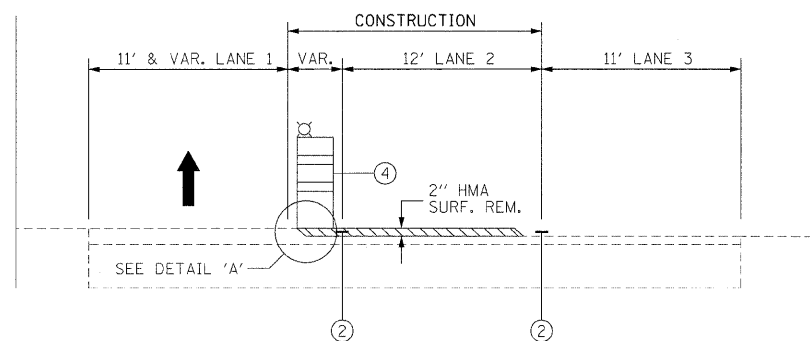
OPERATION 1 - 3 LANE SECTION

SYMM. ABOUT MEDIAN



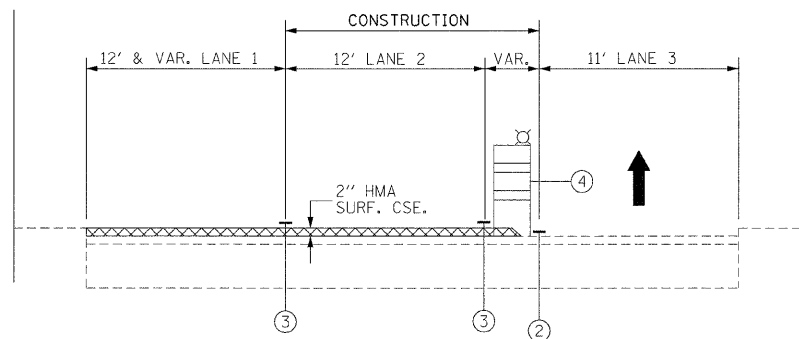
OPERATION 4 - 3 LANE SECTION

SYMM. ABOUT MEDIAN



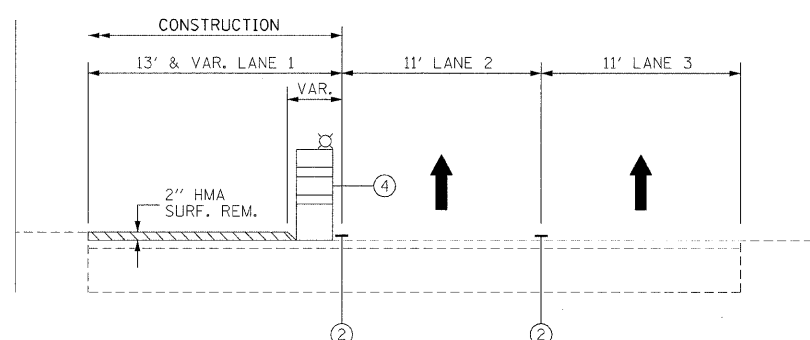
OPERATION 2 - 3 LANE SECTION

SYMM. ABOUT MEDIAN



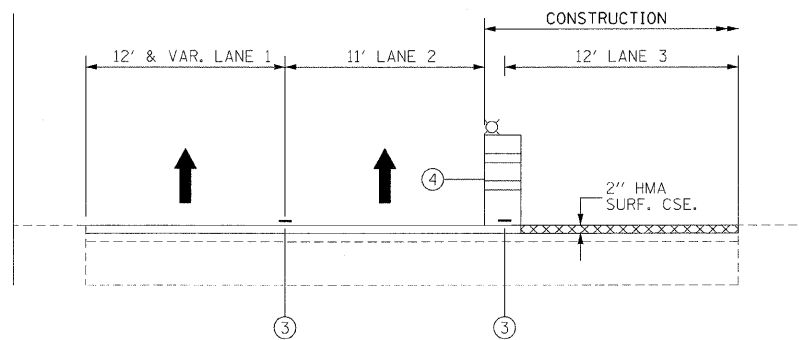
OPERATION 5 - 3 LANE SECTION

SYMM. ABOUT MEDIAN



OPERATION 3 - 3 LANE SECTION

SYMM. ABOUT MEDIAN



OPERATION 6 - 3 LANE SECTION

CONSTRUCTION SEQUENCE

- OPERATION 1**
-2" HOT-MIX ASPHALT SURFACE REMOVAL ON LANE 3
- OPERATION 2**
-2" HOT-MIX ASPHALT SURFACE REMOVAL ON LANE 2
- OPERATION 3**
-2" HOT-MIX ASPHALT SURFACE REMOVAL ON LANE 1
- OPERATION 4**
-PLACE 2" SURFACE ACROSS LANE 1
- OPERATION 5**
-PLACE 2" SURFACE ACROSS LANE 2
- OPERATION 6**
-PLACE 2" SURFACE ACROSS LANE 3

LEGEND

- ① EXISTING PAVEMENT MARKING
- ② EPOXY PAVEMENT MARKING LINE, 5" (10' DASH - 30' SKIP OR SOLID)
- ③ PERMANENT PAVEMENT MARKING
- ④ DRUMS w/ STEADY BURN LIGHTS @ 100' C-C
- HOT-MIX ASPHALT SURFACE REMOVAL
- PROPOSED SURFACING

STAGE 3 CONSTRUCTION

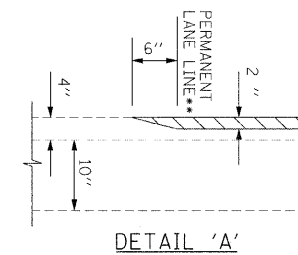
- MILL AND RESURFACE EASTBOUND I-90/94
- CONSTRUCT PAVEMENT MARKINGS

STAGE 3 TRAFFIC

USE THE FOLLOWING STANDARDS AS NEEDED FOR CONSTRUCTION:
 701400 APPROACH TO LANE CLOSURE, FREEWAY EXPRESSWAY
 701401 LANE CLOSURE, FREEWAY/EXPRESSWAY
 701446 TWO LANE CLOSURE FREEWAY/EXPRESSWAY
 701426 LANE CLOSURE, MULTILANE, INTERMITTENT OR MOVING OPERATIONS FOR SPEEDS >= 45MPH

STAGE 3 NOTES

1. FOR GRADE DIFFERENTIALS BETWEEN LANES, SEE GENERAL NOTES. UNEVEN LANE SIGNS WILL BE REQUIRED.
2. ALL RESURFACING OPERATIONS SHALL HAVE ALL WORK PERFORMED AT NIGHT.
3. DRUMS @ 100 C-C SHALL BE MOVED TO OUTSIDE LANE EDGE AT THE SHOULDER FOR NON-WORKING HOURS.
4. OPERATIONS 1, 2, & 3 WORK MAY BE DONE IN ONE NIGHT WITH AUTHORIZATION OF THE ENGINEER.
5. OPERATIONS 4, 5, & 6 WORK MAY BE DONE IN ONE NIGHT WITH AUTHORIZATION OF THE ENGINEER.
6. OPERATION 4 & 5 MAY BE COMBINED INTO ONE OPERATION WITH AUTHORIZATION BY THE ENGINEER.



** SEE PAVEMENT MARKING PLANS FOR FINAL LOCATIONS.

ILLINOIS DEPARTMENT OF TRANSPORTATION
MAINTENANCE OF TRAFFIC
 I-90/94 KENNEDY EXPRESSWAY
 RESURFACING SEQUENCE OF OPERATIONS
 TO STA.

SCALE : 1" = NTS DRAWN BY : BEC
 DATE : 02/06/09 CHECKED BY : GB