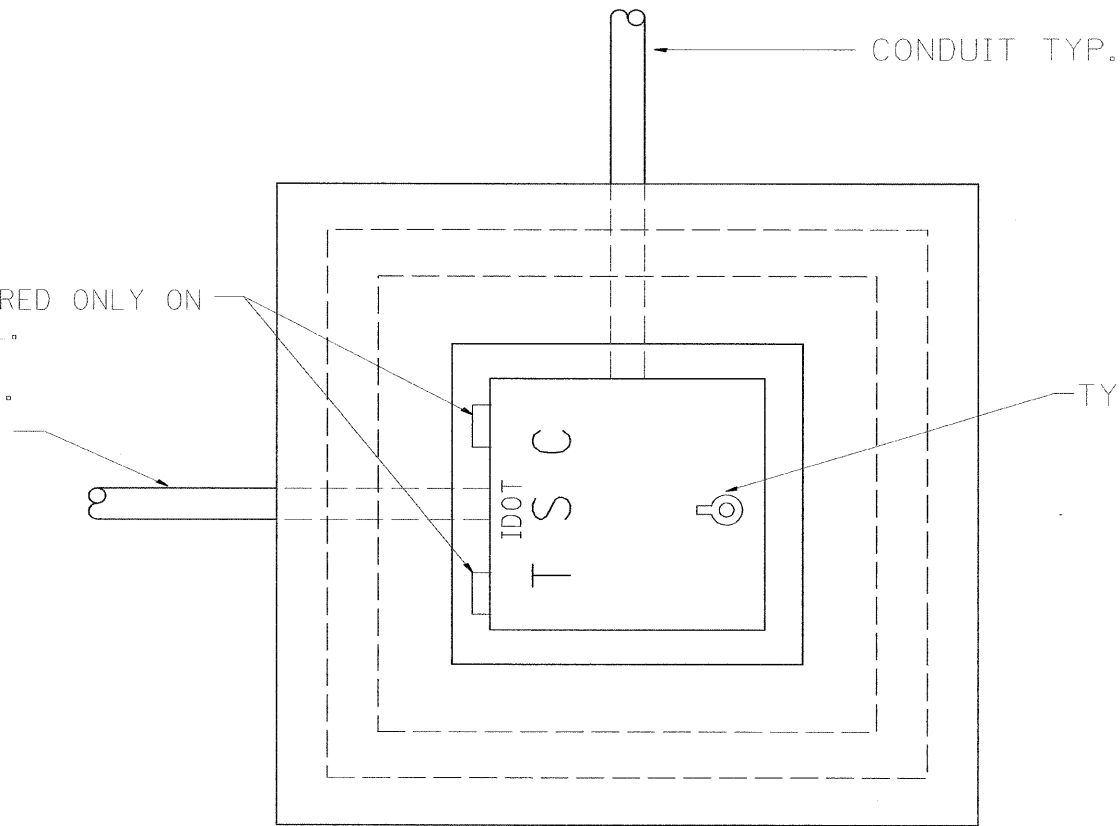


F.A. RTE.	SECTION	COUNTY	TOTAL SHEETS	SHEET NO.
90/94	0202.6-2P, ETC. 1415 & 1517R-7	COOK	246	T5
STA.		TO STA.		
FED. ROAD DIST. NO.		ILLINOIS FED. AID PROJECT		
CONTRACT NO. 62408				

TYPE "T" HINGES REQUIRED ONLY ON ON HEAVY DUTY SPECIAL.

CONDUIT TYP.



TYPE "G" HANDLE FOR BOTH HDHH AND HDHH SPECIAL

HEAVY DUTY HANDHOLE MINIMUM DIMENSIONS (UNHINGED)

A	711 mm (28")
B	559 mm (22")
C	200 mm (8")

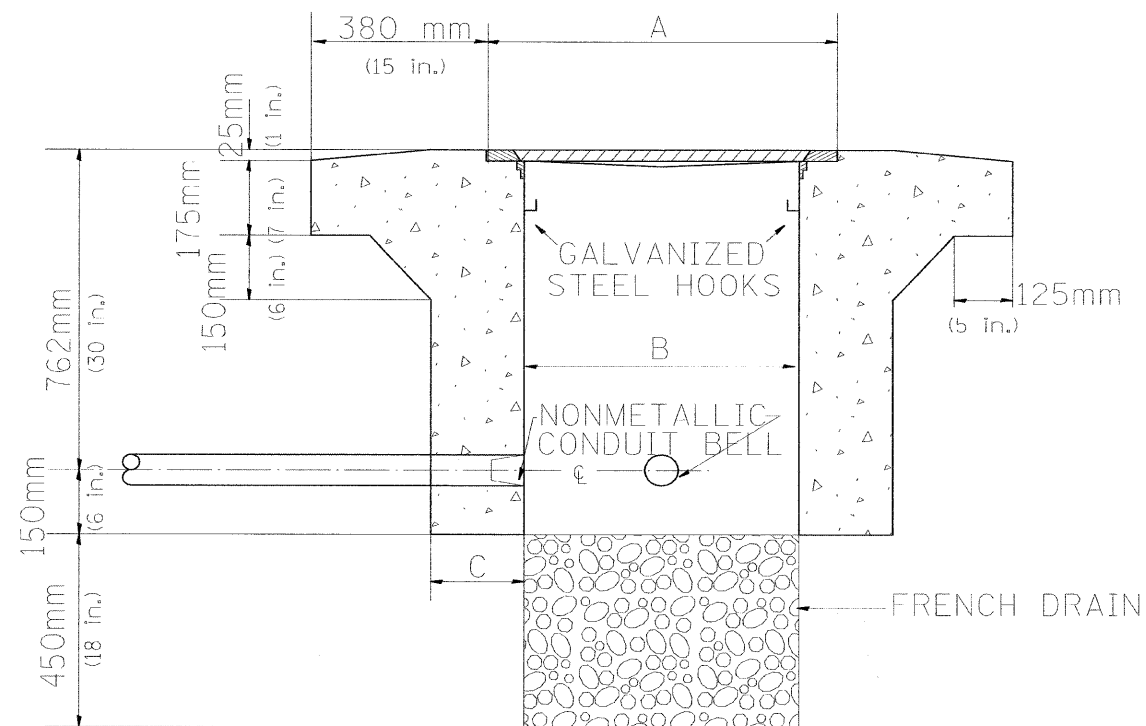
(FRAME AND COVER 118 Kg. (260 LBS.) MIN.)

PLAN

HEAVY DUTY HANDHOLE SPECIAL MINIMUM DIMENSIONS

A	800 mm (31.5")
B	762 mm (30")
C	250 mm (10")

(FRAME AND COVER 184 Kg. (405 LBS.))



ELEVATION

PC CONCRETE - HEAVY DUTY SPECIAL

REVISIONS		ILLINOIS DEPARTMENT OF TRANSPORTATION TRAFFIC SYSTEMS CENTER
NAME	DATE	
R.L.	4-97	PC CONCRETE - HEAVY DUTY
		SCALE: VERT. NONE HORIZ.                      DRAWN BY G.M.
		DATE 9-11-96                      CHECKED BY R.L.