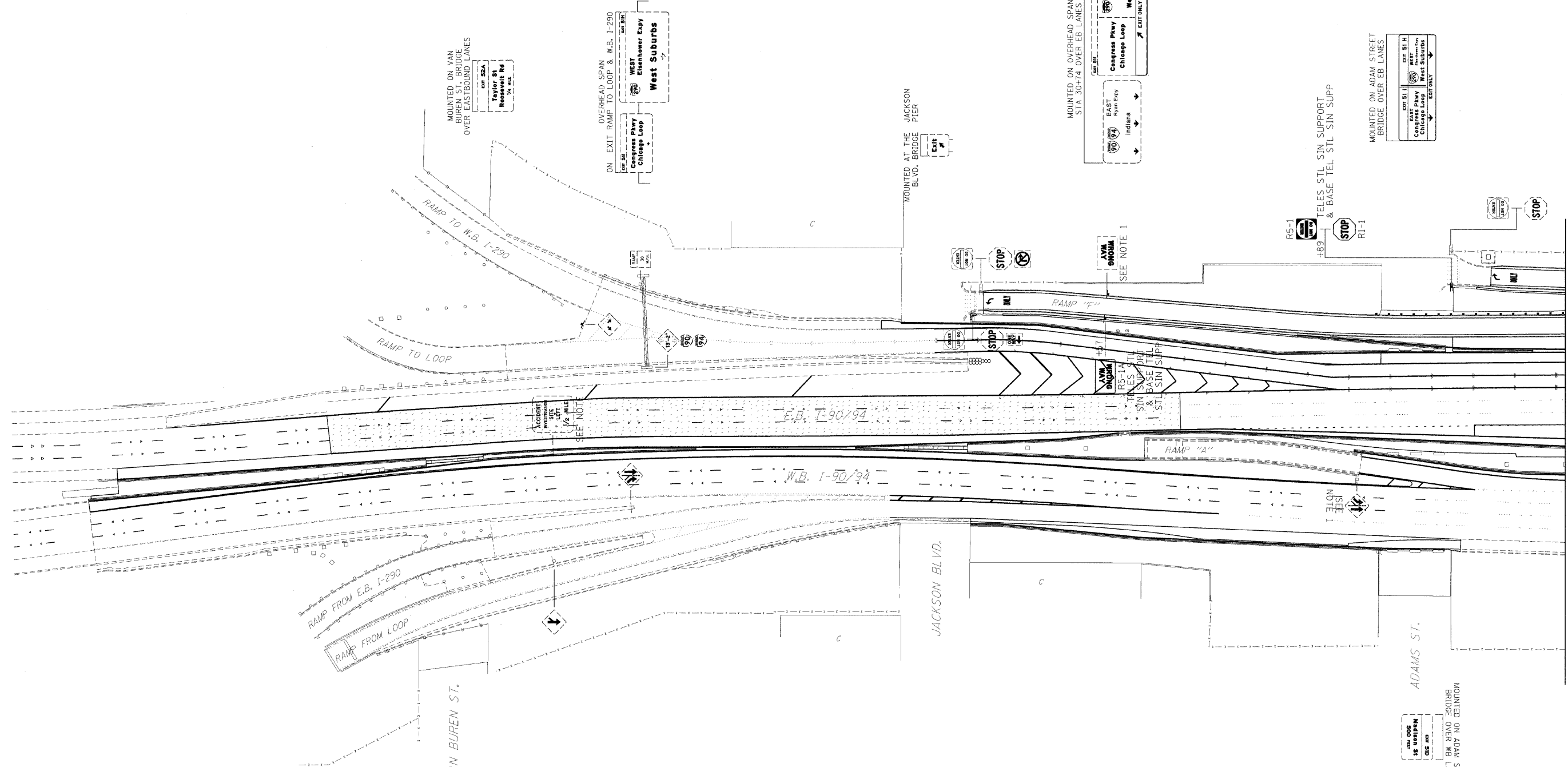


| | | | | |
|---------------------|---------------------------------|------------------|--------------|-----------|
| F.A.I. RTE. | SECTION | COUNTY | TOTAL SHEETS | SHEET NO. |
| 90/94 | 40202.6-2P, ETC, 1415 & 1517R-7 | COOK | 246 | 91 |
| STA. 20+00 | | TO STA. 35+00 | | |
| FED. ROAD DIST. NO. | ILLINOIS | FED. AID PROJECT | | |
| CONTRACT NO. 62408 | | | | |

| | | | |
|---------------|--------------------|----|------|
| PLAN | SURVEYED | BY | DATE |
| NOTE BOOK NO. | ALIGNED | | |
| | CHECKED | | |
| | PT. OF WAY CHECKED | | |
| | PAID FILE NAME | | |

| | | | |
|---------------|-----------------------------|----|------|
| PROFILE | SURVEYED | BY | DATE |
| NOTE BOOK NO. | GRADES CHECKED | | |
| | BLM. NOTED | | |
| | STRUCTURE MATERIALS CHECKED | | |



MOUNTED ON OVERHEAD SPAN AT TOP OF RAMP FROM LOOP

NOTES:
 1. SIGN TO BE REMOVED AND REPLACED IN ACCORDANCE WITH ARTICLE 107.25 OF THE STANDARD SPECIFICATIONS.

SIGN LEGEND

EXISTING SIGN

PROPOSED SIGN

ILLINOIS DEPARTMENT OF TRANSPORTATION

SIGNING PLAN

I-90/94 KENNEDY EXPRESSWAY

STA. 20+00 TO STA. 35+00

SCALE : 1" = 50'
 DATE : 02/06/09

DRAWN BY : BEC
 CHECKED BY : GB

MATCH LINE STA. 35+00 (E.B.)

