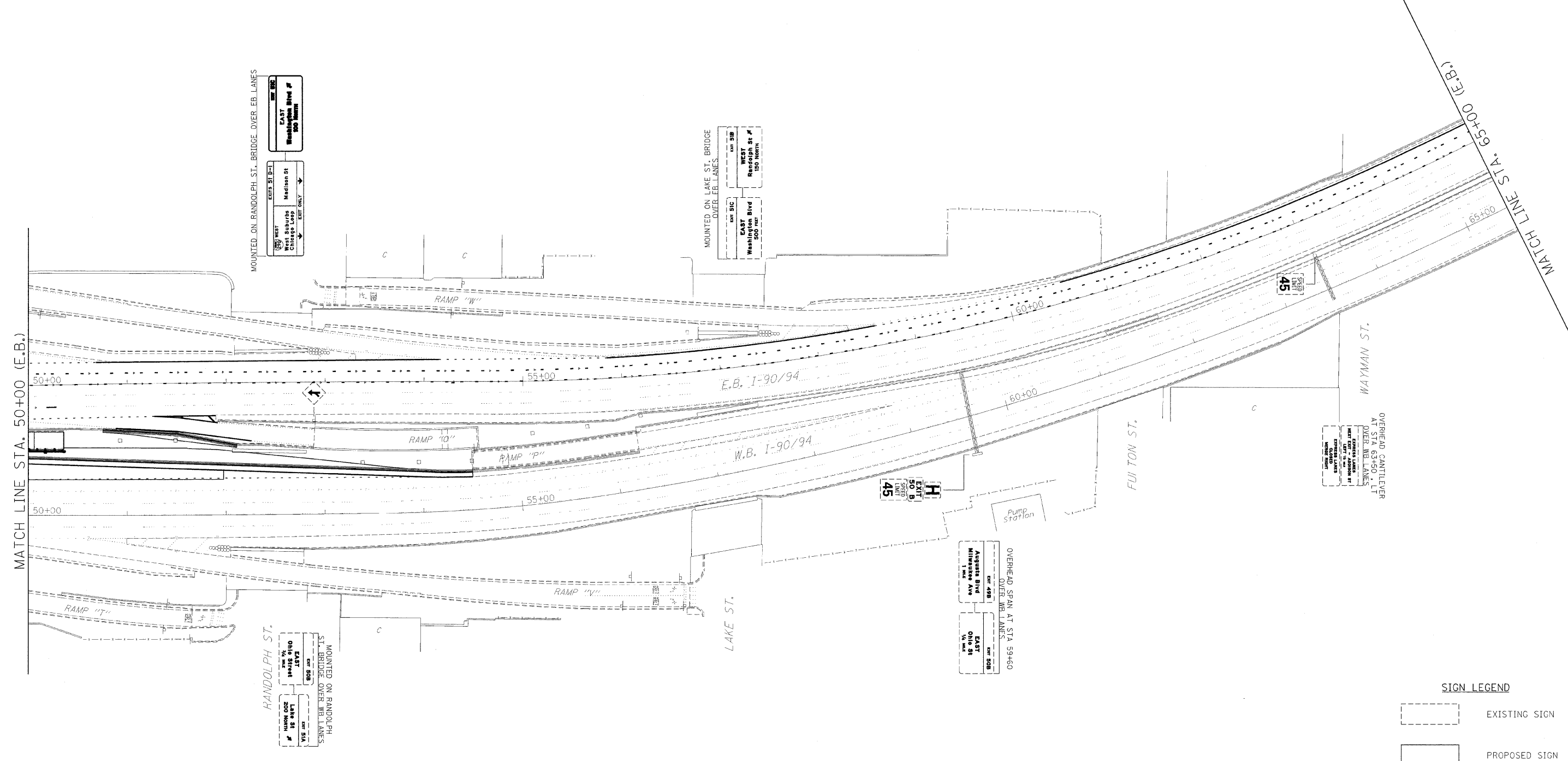


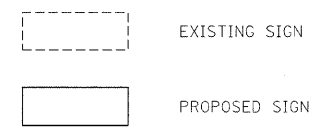
F.A.I. RTE.	SECTION	COUNTY	TOTAL SHEETS	SHEET NO.
90/94	10202.6-2P, ETC, 1415 & 1517IR-7	COOK	246	93
STA. 50+00		TO STA. 65+00		
FED. ROAD DIST. NO.		ILLINOIS FED. AID PROJECT		
CONTRACT NO. 62408				



PLAN	SURVEYED	BY	DATE
NOTE BOOK NO.	ALIGNMENT CHECKED		
	RT. OF WAY CHECKED		
	PROP. FILE NAME		

PROFILE	SURVEYED	BY	DATE
NOTE BOOK NO.	GRADES CHECKED		
	BLK. NOTED		
	INCLUDE NOTATIONS CH-10		

**SIGN LEGEND**



NOTES:  
 1. SIGN TO BE REMOVED AND REPLACED IN ACCORDANCE WITH ARTICLE 107.25 OF THE STANDARD SPECIFICATIONS.

ILLINOIS DEPARTMENT OF TRANSPORTATION

**SIGNING PLAN**

I-90/94 KENNEDY EXPRESSWAY

STA. 50+00 TO STA. 65+00

SCALE : 1" = 50'  
 DATE : 02/06/09

DRAWN BY : BEC  
 CHECKED BY : GB

