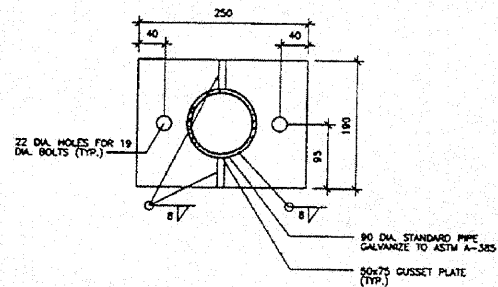


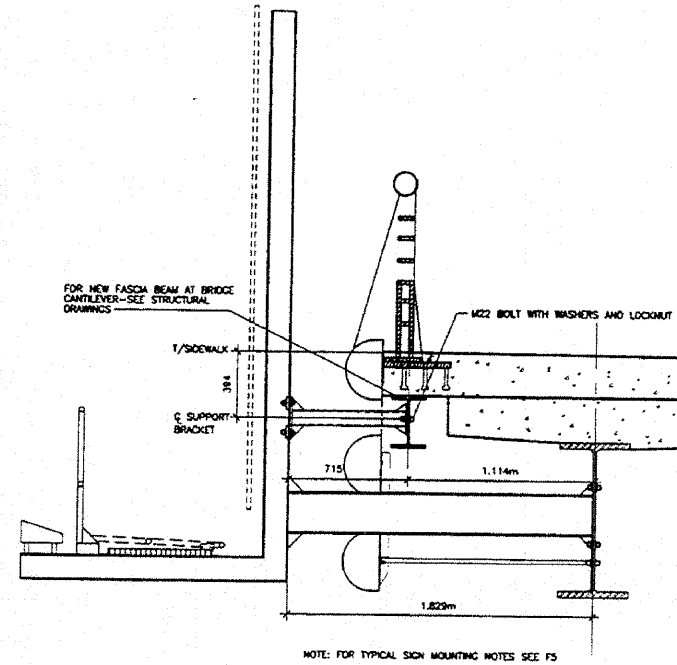
STATE OF ILLINOIS
DEPARTMENT OF TRANSPORTATION

DATE	BY	CHKD	APP'D	SHEET NO.	TOTAL SHEETS
				246	111

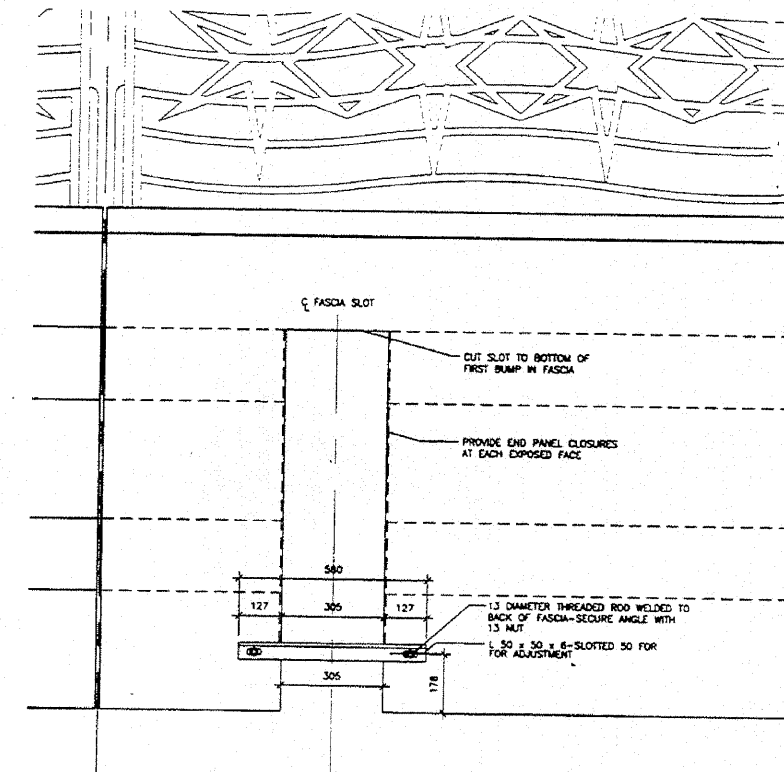
SHEET NO. A-704
SHEETS



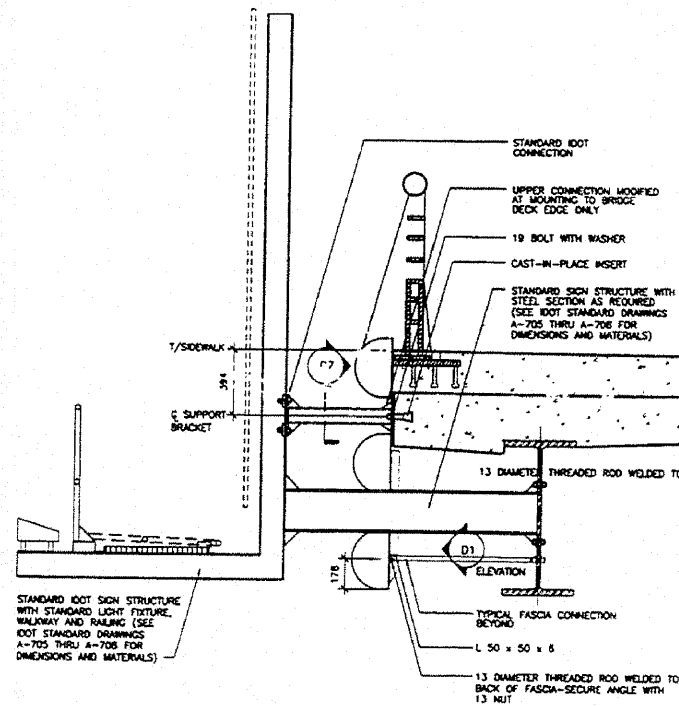
C7 SUPPORT BRACKET DETAIL
SCALE: 1:5



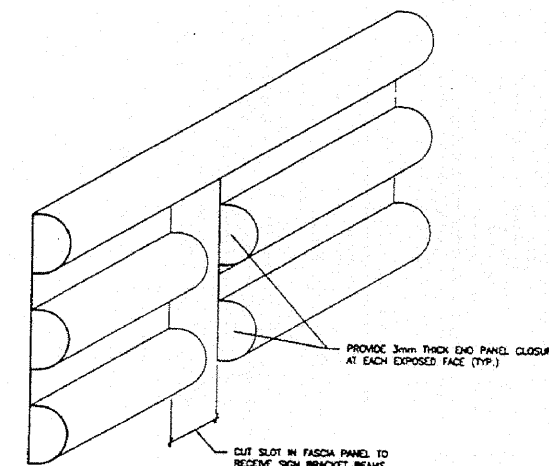
C5 SPECIAL SIGN BRACKET AT SIDEWALK CANTILEVER-DETAIL
SCALE: 1:20



D1 FASCIA SLOT DETAIL
SCALE: 1:10



F5 BRIDGE MOUNTED SIGN-SECTION (TYP.)
SCALE: 1:20



F3 FASCIA PANEL AT SIGN BRACKET-SCHEMATIC VIEW (TYP.)
SCALE: NONE

NOTE: ALL THREADED ROD CONFORMING TO ASTM A307M, M20 X 305mm LONG EACH WITH ONE PLATE WASHER AND LOCKWASHER AND BE HOT DIP GALVANIZED PER AASHTO M252. THEY SHALL BE EITHER CAST INTO THE CONCRETE OR EPOXY GROUTED IN ACCORDANCE WITH SECTION 504 OF THE STANDARD SPECIFICATIONS. MINIMUM EMBEDMENT IN CONCRETE SHALL BE 230mm.

DE STEFANO + PARTNERS

Professional Engineer No. 123
Architect No. 456
Professional Engineer No. 789

HNTB HNTB CORPORATION

ALL DIMENSIONS IN MILLIMETERS U.M.O.

BRIDGE MOUNTED SIGNS-DETAILS

ADAMS STREET OVER I-90/94
F.A.U. RTE. 1421, SEC.
COOK COUNTY
STA. 1+350.04
STR. NUM. 016-0589

Scale: AS NOTED Date: NOV. 3, 1997