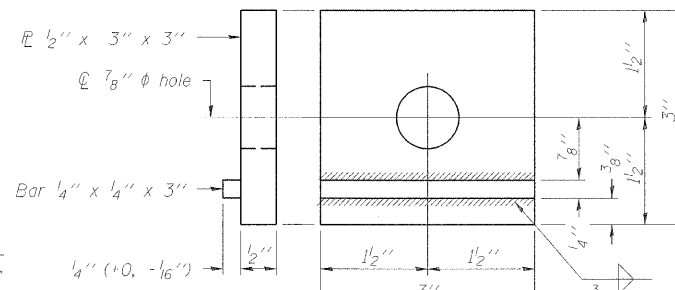
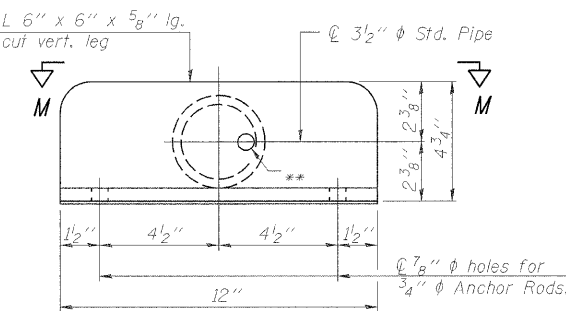
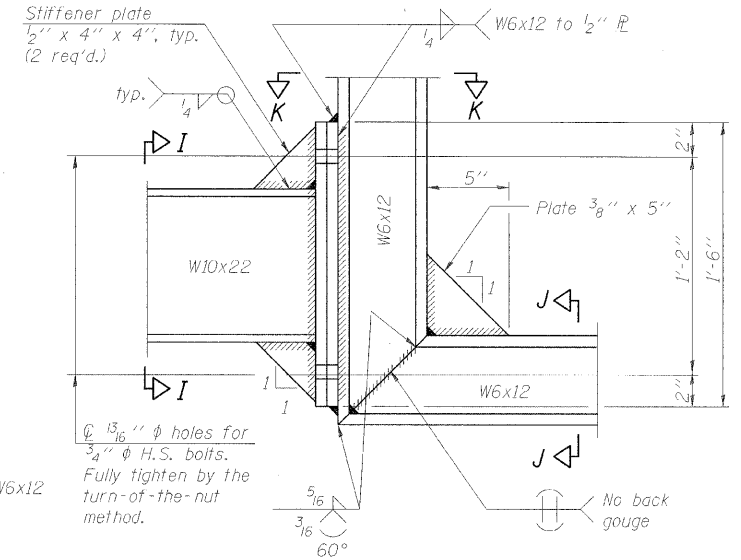
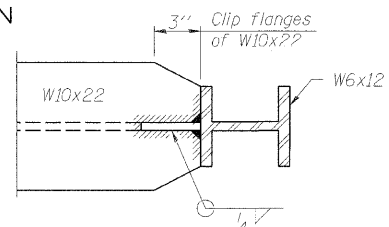
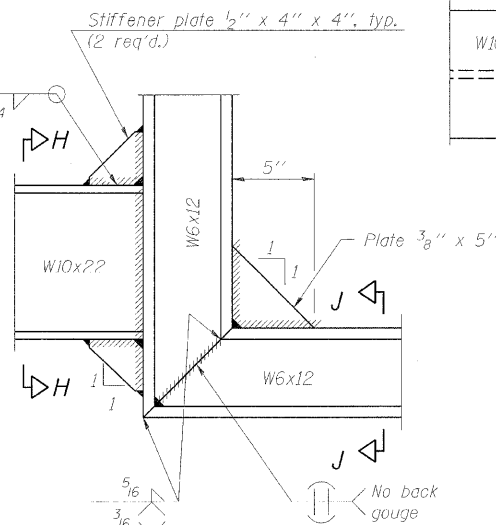
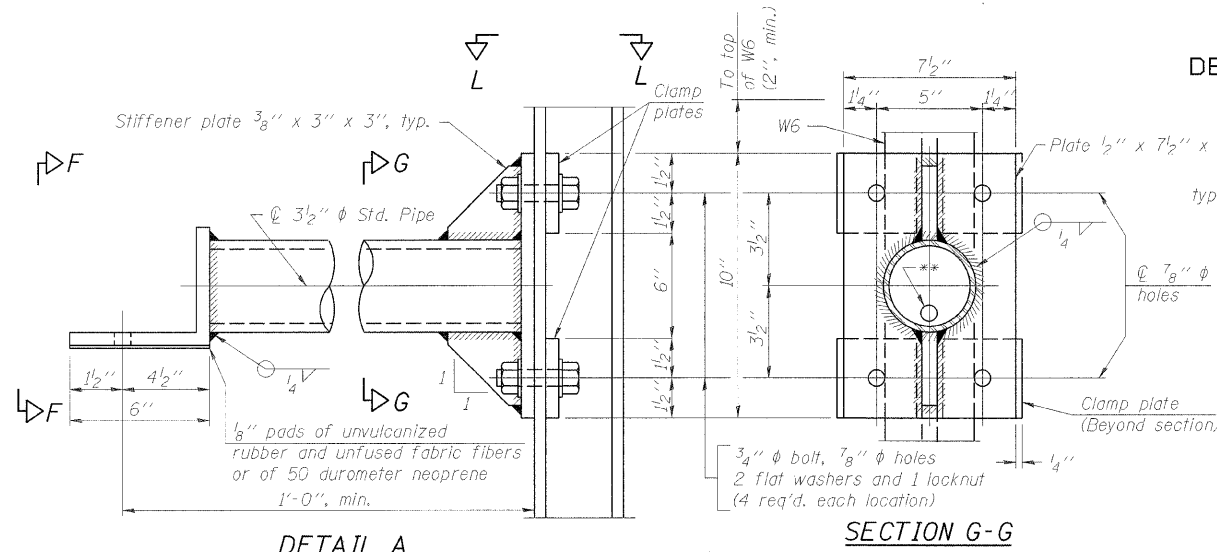
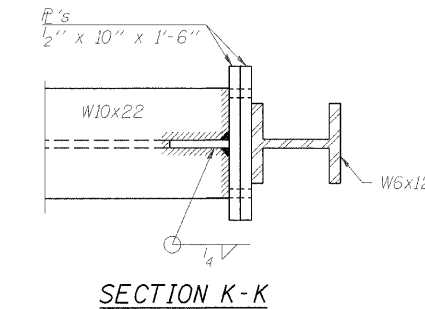


STATE OF ILLINOIS
DEPARTMENT OF TRANSPORTATION



DETAIL B - WELDED W10x22
TO W6x12 CONNECTION



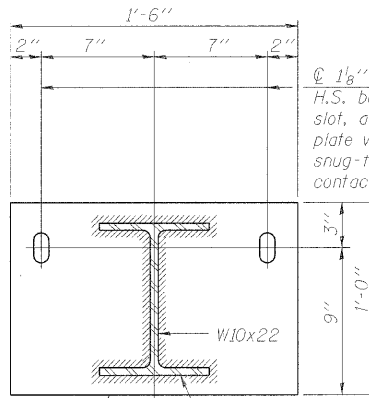
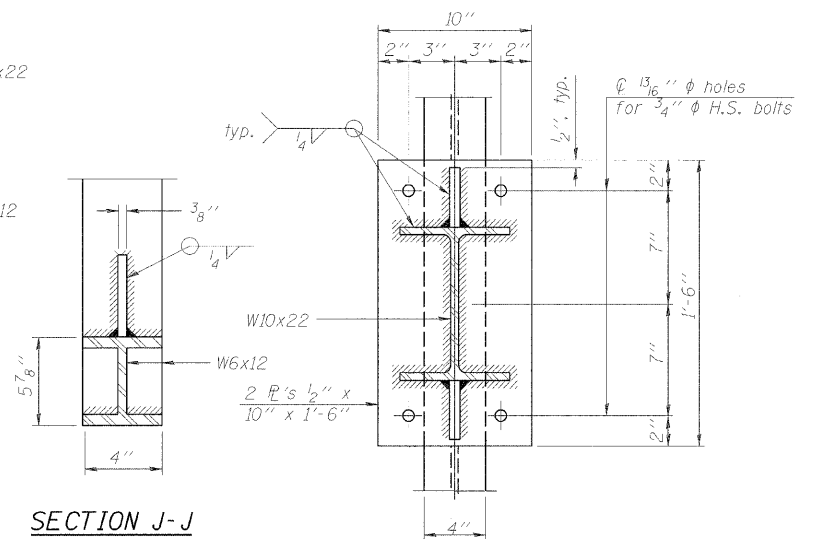
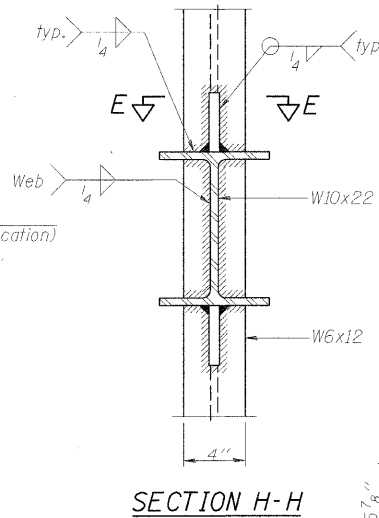
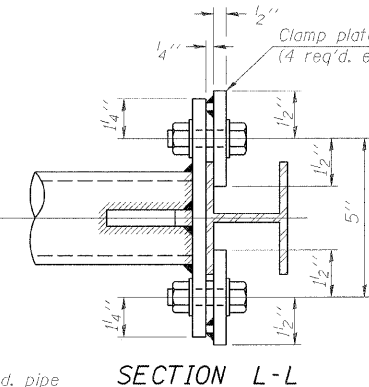
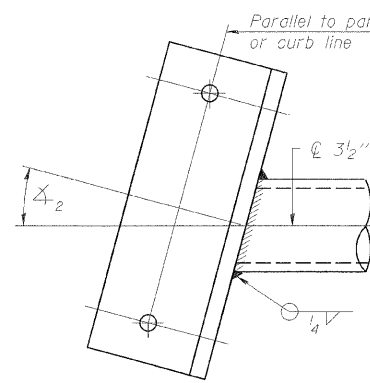
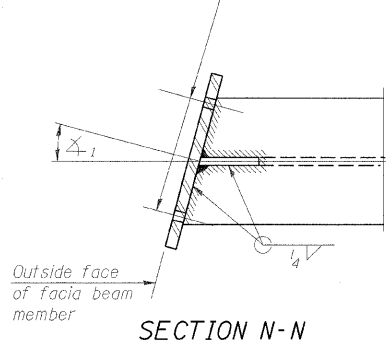
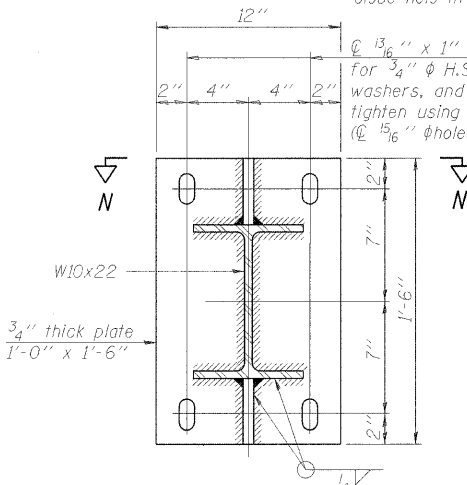
DETAIL B - ALTERNATE BOLTED
W10x22 TO W6x12 CONNECTION

Alternate may be substituted by contractor to facilitate construction or galvanizing, especially on long struts for skewed bridges.

** 13/16" holes for galvanizing. After galvanizing, install 7/8" diameter A307 hot-dip galvanized bolt to close hole in angle. (No bolt required in 1/2" plate.)

CLAMP PLATE DETAILS

13/16" x 1" slotted holes in base plate for 3/4" diameter H.S. bolts with two hardened washers, and nut for each. Fully tighten using turn-of-the-nut method. (13/16" diameter holes thru web of fascia beam.)



1 1/8" x 2" slotted holes in plate for 1" diameter H.S. bolts with hardened plate washer over slot, and standard flat washer and 4" x 4" x 1/2" plate washer on far end. Use locknuts and only snug-tighten bolts, insuring pad is in uniform contact with concrete before tightening begins.

BRIDGE MOUNT SIGN STRUCTURES
CONNECTION DETAILS

ADAM ST., MONROE ST., MADISON ST., WASHINGTON ST., & RANDOLPH ST.

DESIGNED -	200
CHECKED -	EXAMINED
DRAWN -	PASSED
CHECKED -	ENGINEER OF BRIDGES AND STRUCTURES

BM-3 12-1-08

NUMBER	REVISION	DATE

SHEET NO.	F.A.I. RTE.	SECTION	COUNTY	TOTAL SHEETS	SHEET NO.
SHEETS	90/94	10202.6-2P, ETC., 1415 & 1517R-7	COOK	246	114
FED. ROAD DIST. NO.			ILLINOIS FED. AID PROJECT		
CONTRACT NO.			62408		