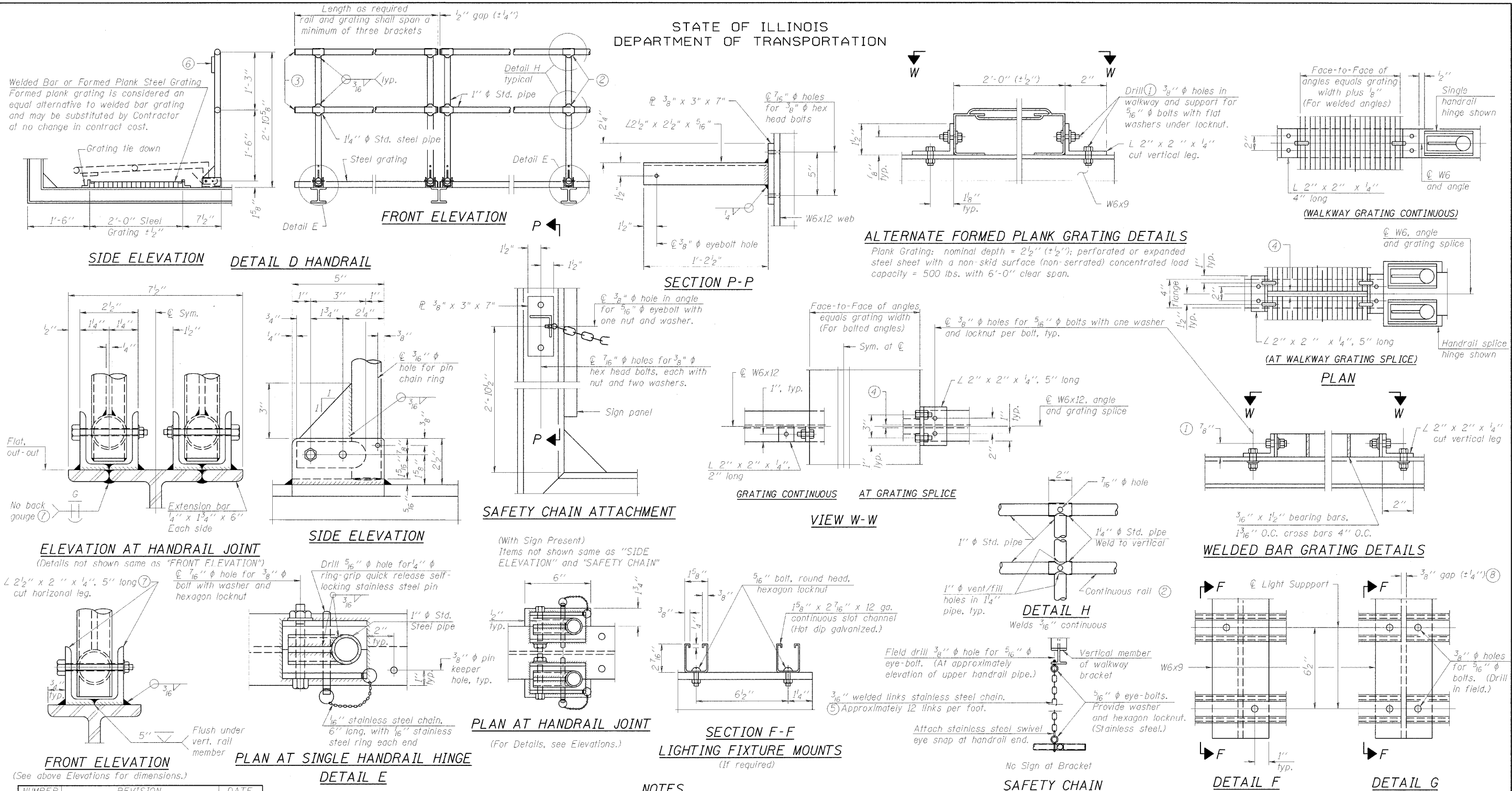
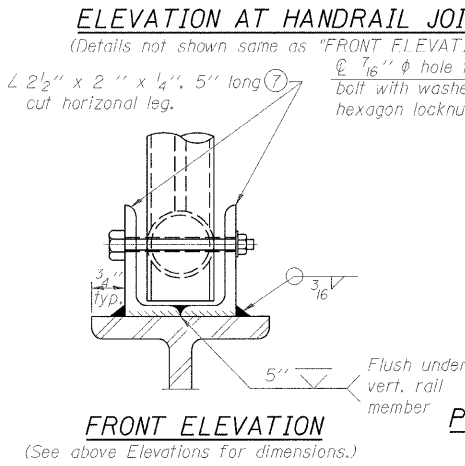
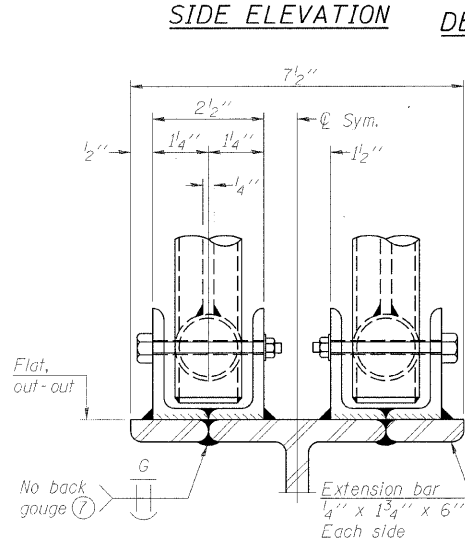


STATE OF ILLINOIS  
DEPARTMENT OF TRANSPORTATION



Welded Bar or Formed Plank Steel Grating  
Formed plank grating is considered an equal alternative to welded bar grating and may be substituted by Contractor at no change in contract cost.



NUMBER	REVISION	DATE

DESIGNED -	200
CHECKED -	EXAMINED
DRAWN -	PASSED
CHECKED -	ENGINEER OF BRIDGES AND STRUCTURES

BM-4 12-1-08

- NOTES**
- Drilling holes in grating may be done in shop or field, based on Contractor's preference and subject to accurate alignment. Field drilled holes must be touched up with galvanized paint.
  - Horizontal rail member shall be continuous thru 1 1/4" pipe. Provide 7/16" hole in 1 1/4" pipe for 3/8" bolt. Field drill 7/16" hole in horizontal rail member. Provide washer and locknut for bolt. (Use 5/16" eyebolts in 7/16" holes on top rail at ends only.)
  - Install standard force-fit end caps or weld 1/8" end plates with 1/8" c.f.w. and grind smooth. (All rail ends.)
  - 3/8" (±1/4") gap between grating panels at splice.
  - Chain to be type 304L stainless steel suitable for prolonged exterior exposure. Approximately 3'-6" long chain per location. Maximum sag with handrail erected = 4".
  - 1/8" x 1/2" x 2" welded to handrail posts to protect locations that contact grating.
  - Extrusions may be used in lieu of details shown, with approval by Engineer.
  - Field cut ends of light support channels shall be free of burrs or hazardous projections and coated with zinc-rich primer or equivalent.

BRIDGE MOUNT SIGN STRUCTURES WALKWAY DETAILS				
ADAM ST., MONROE ST., MADISON ST., WASHINGTON ST., & RANDOLPH ST.				
SHEET NO.	F.A. RTE.	SECTION	COUNTY	TOTAL SHEETS
SHEETS	90/94	(0202.6-2P, ETC., 1415 & 1517)R-7	COOK	246
CONTRACT NO.				62408
FED. ROAD DIST. NO. - ILLINOIS FED. AID PROJECT				