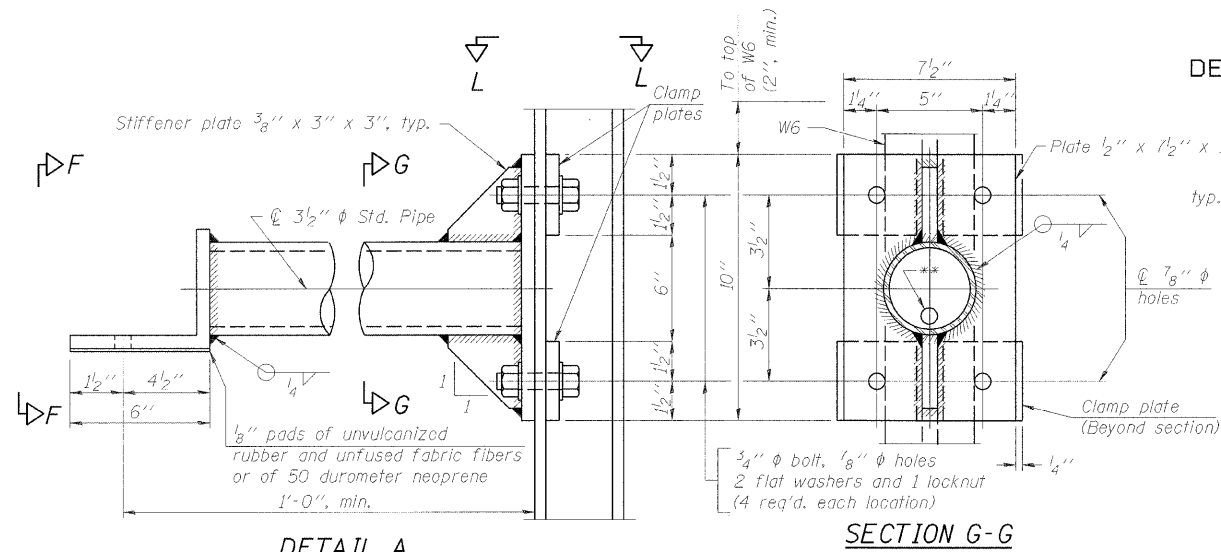
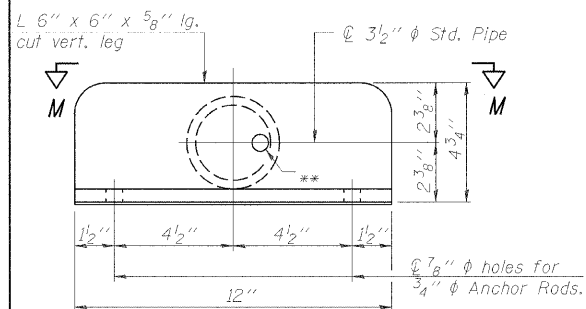


STATE OF ILLINOIS
DEPARTMENT OF TRANSPORTATION

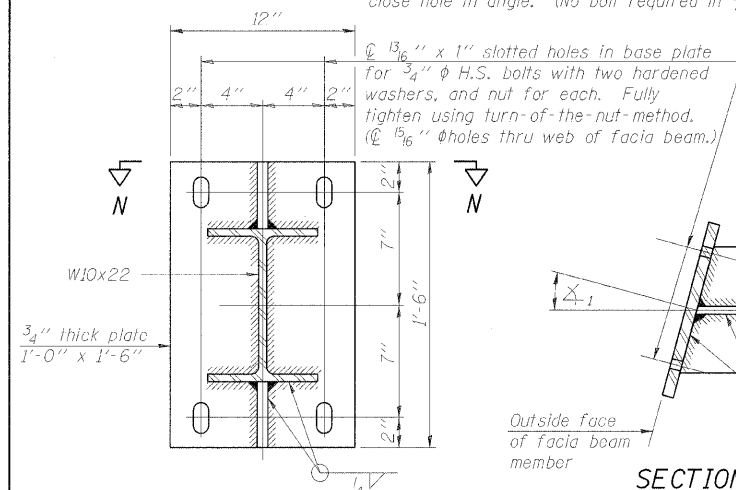


DETAIL A



VIEW F-F

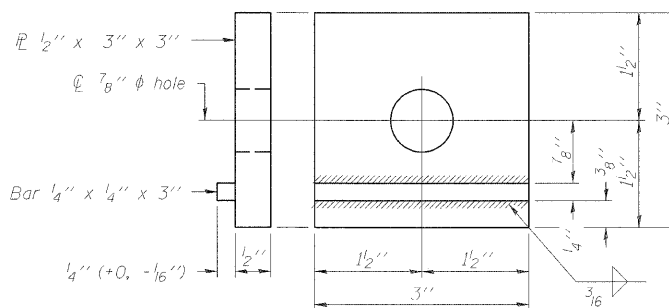
** 13/16\"/>



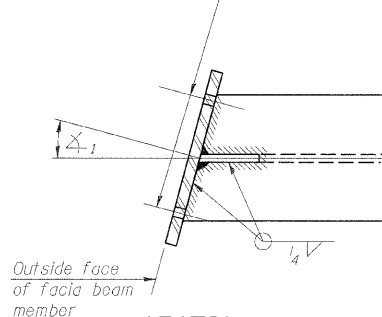
SECTION C-C

Steel beam or girder connection plate details

Note: For constant slab overhang of fascia beam, $\Delta_1 = \Delta_2 =$ sign angle. For flared beams or other special cases where $\Delta_1 \neq \Delta_2$, $\Delta_1 =$ sign angle.

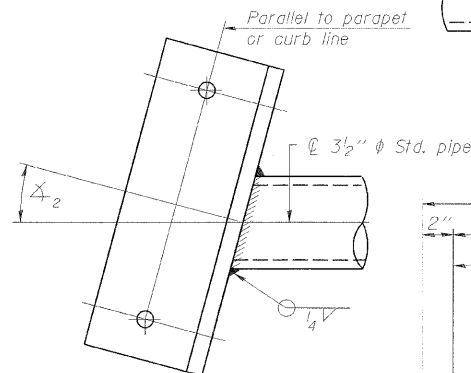


CLAMP PLATE DETAILS



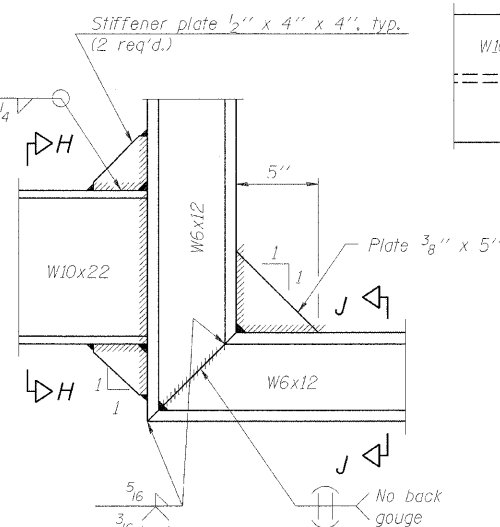
SECTION N-N

Skewed connection detail for W10x22 to fascia beam.

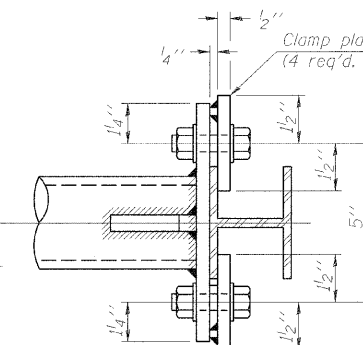


SECTION M-M

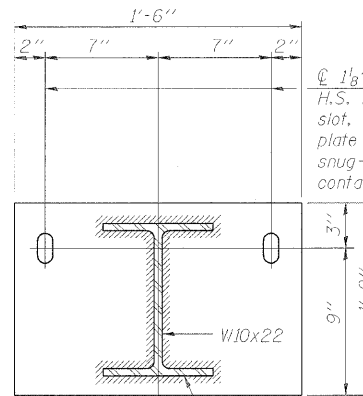
Skewed connection detail for 3/2\"/>



DETAIL B - WELDED W10x22 TO W6x12 CONNECTION

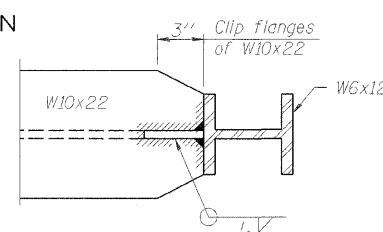


SECTION L-L

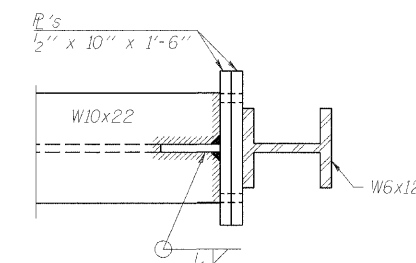


SECTION D-D

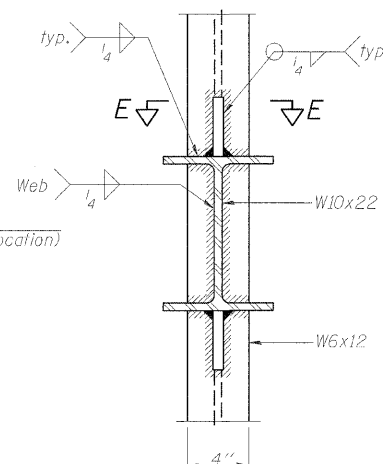
Concrete beam or girder connection plate details.



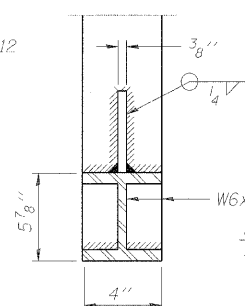
SECTION E-E



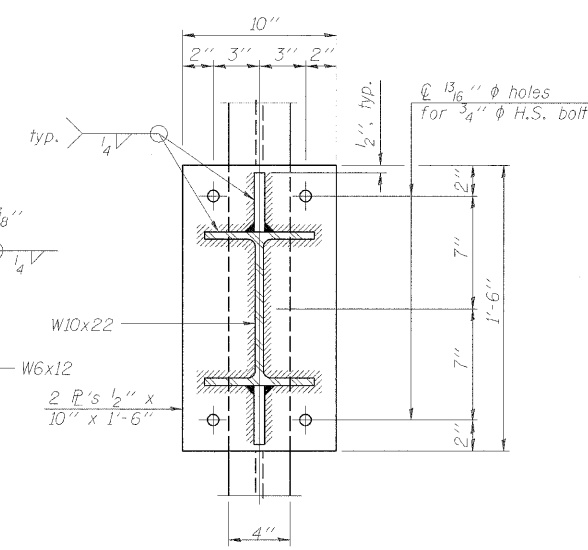
SECTION K-K



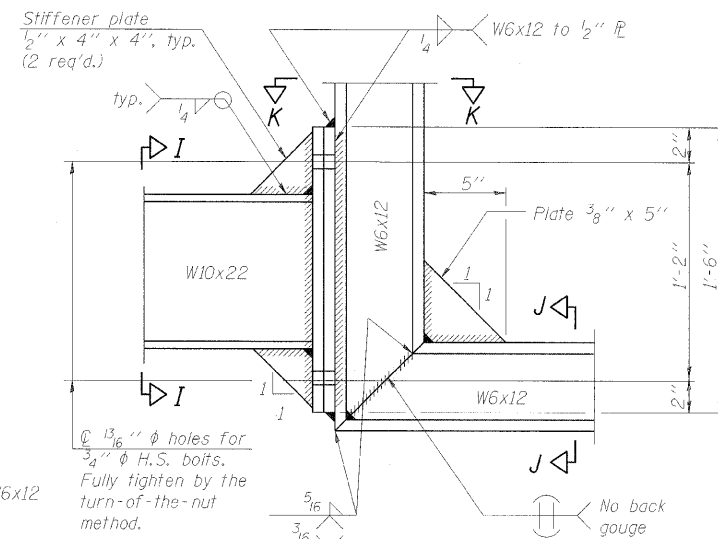
SECTION H-H



SECTION J-J



SECTION I-I



DETAIL B - ALTERNATE BOLTED W10x22 TO W6x12 CONNECTION

Alternate may be substituted by contractor to facilitate construction or galvanizing, especially on long struts for skewed bridges.

BRIDGE MOUNT SIGN STRUCTURES
CONNECTION DETAILS

OGDEN AVE.

SHEET NO.	F.A.I. RTE.	SECTION	COUNTY	TOTAL SHEETS	SHEET NO.
BM-3	90/94	10202.6-2P, ETC., 1415 & 1517R-7	COOK	246	118
CONTRACT NO.					62405
FED. ROAD DIST. NO. - ILLINOIS FED. AID PROJECT					

DESIGNED -	200
CHECKED -	EXAMINED
DRAWN -	PASSED
CHECKED -	ENGINEER OF BRIDGES AND STRUCTURES

BM-3

12-1-08

NUMBER	REVISION	DATE