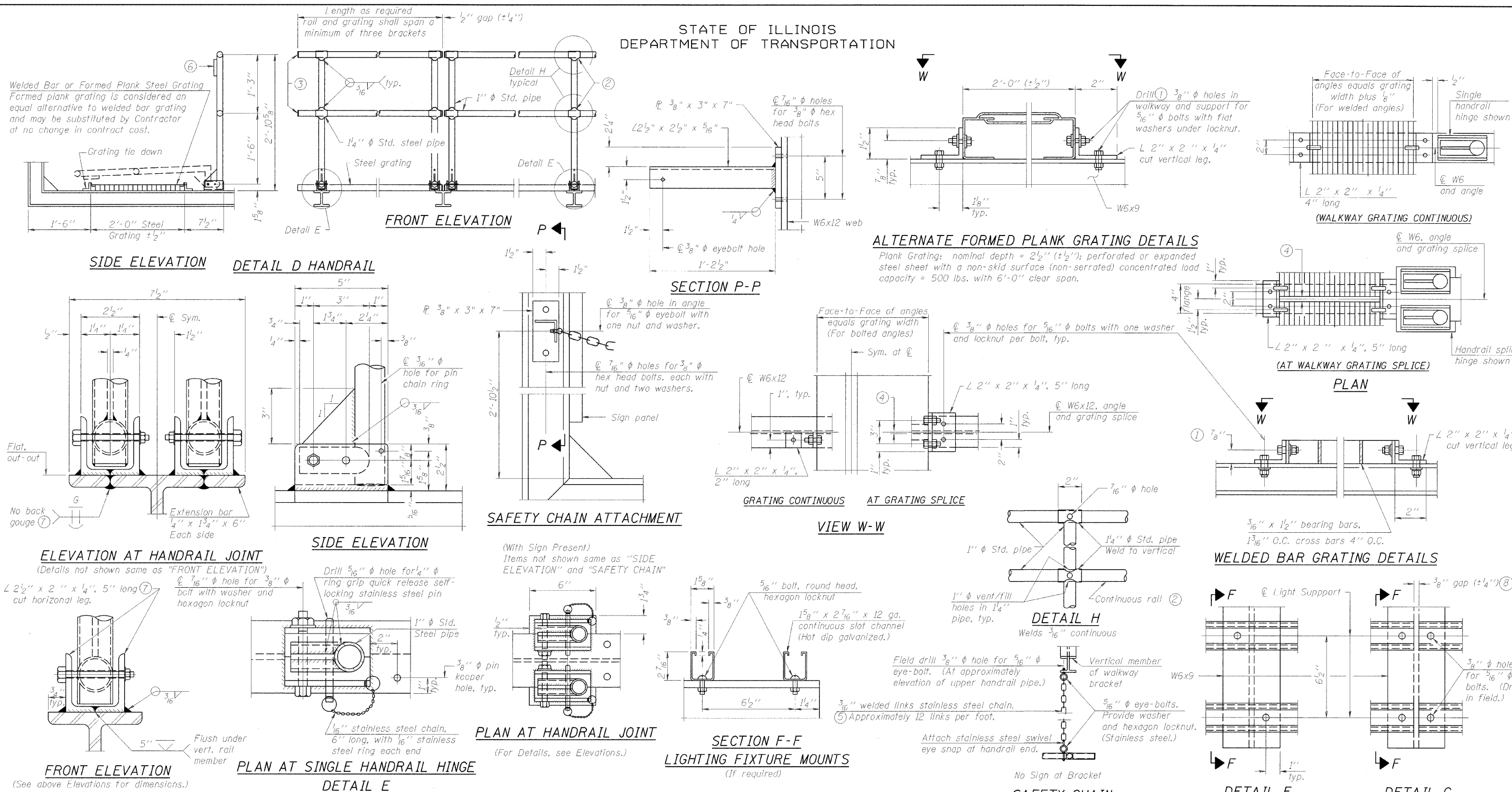


STATE OF ILLINOIS  
DEPARTMENT OF TRANSPORTATION



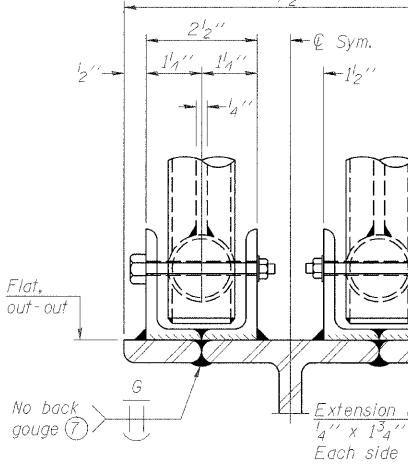
ALTERNATE FORMED PLANK GRATING DETAILS

Plank Grating: nominal depth = 2 1/2" (± 1/2"); perforated or expanded steel sheet with a non-skid surface (non-serrated) concentrated load capacity = 500 lbs. with 6'-0" clear span.

Welded Bar or Formed Plank Steel Grating  
Formed plank grating is considered an equal alternative to welded bar grating and may be substituted by Contractor at no change in contract cost.

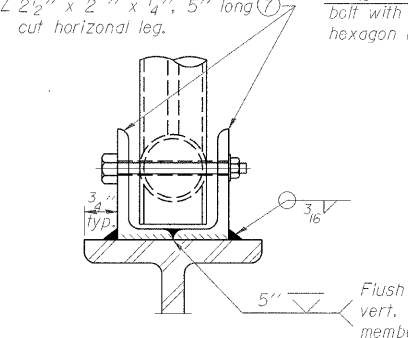
ELEVATION AT HANDRAIL JOINT

(Details not shown same as "FRONT ELEVATION")  
L 2 1/2" x 2" x 1/4", 5" long  
cut horizontal leg.



FRONT ELEVATION

(See above Elevations for dimensions.)



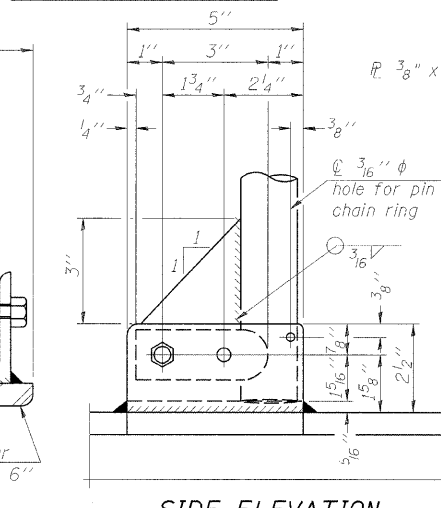
PLAN AT SINGLE HANDRAIL HINGE

Flush under vert. rail member

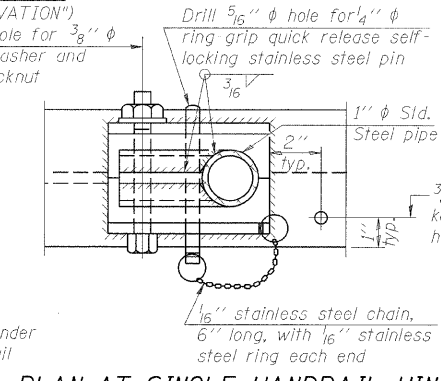
NUMBER	REVISION	DATE

DESIGNED -	200
CHECKED -	EXAMINED
DRAWN -	PASSED
CHECKED -	ENGINEER OF BRIDGES AND STRUCTURES

DETAIL D HANDRAIL

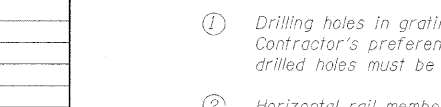


SIDE ELEVATION



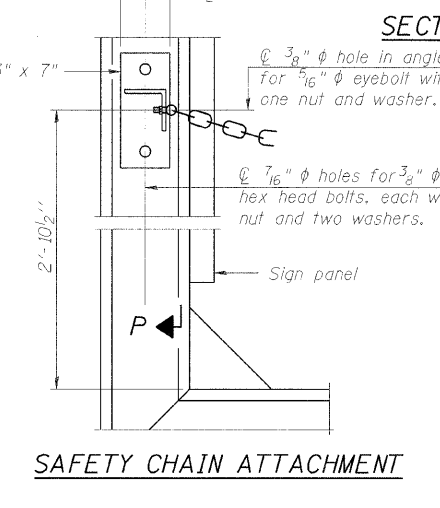
PLAN AT HANDRAIL JOINT

(For Details, see Elevations.)

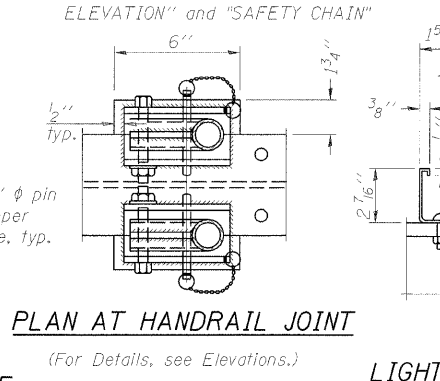


DESIGNED -	200
CHECKED -	EXAMINED
DRAWN -	PASSED
CHECKED -	ENGINEER OF BRIDGES AND STRUCTURES

FRONT ELEVATION

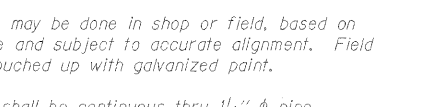


SECTION P-P



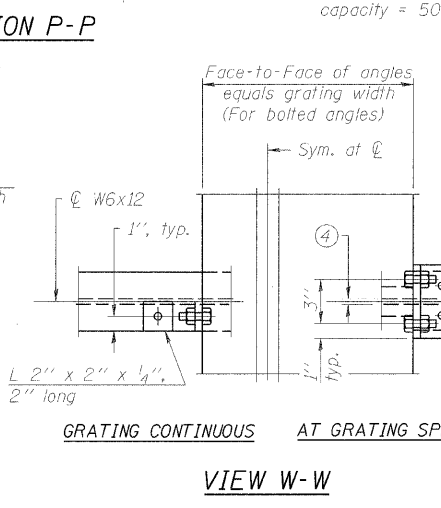
SAFETY CHAIN ATTACHMENT

(With Sign Present)  
Items not shown same as "SIDE ELEVATION" and "SAFETY CHAIN"

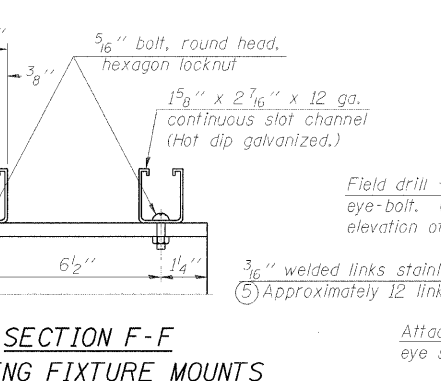


DESIGNED -	200
CHECKED -	EXAMINED
DRAWN -	PASSED
CHECKED -	ENGINEER OF BRIDGES AND STRUCTURES

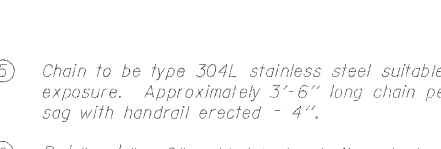
GRATING CONTINUOUS



AT GRATING SPLICE

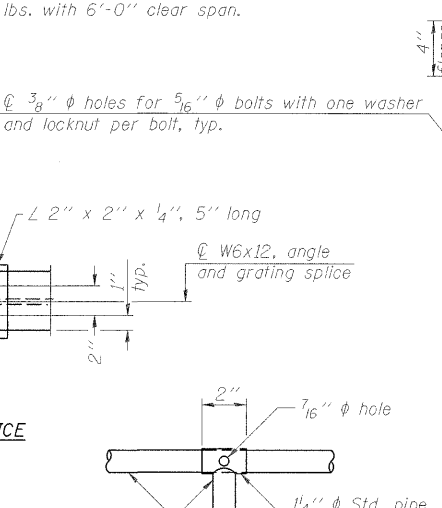


VIEW W-W

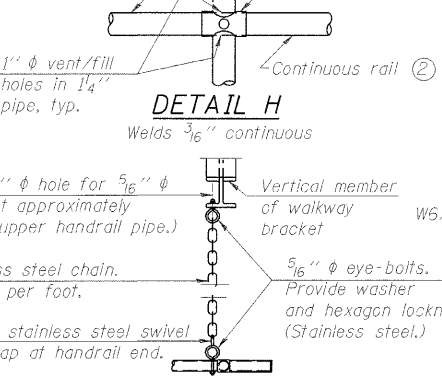


DESIGNED -	200
CHECKED -	EXAMINED
DRAWN -	PASSED
CHECKED -	ENGINEER OF BRIDGES AND STRUCTURES

DETAIL H



WELDED BAR GRATING DETAILS

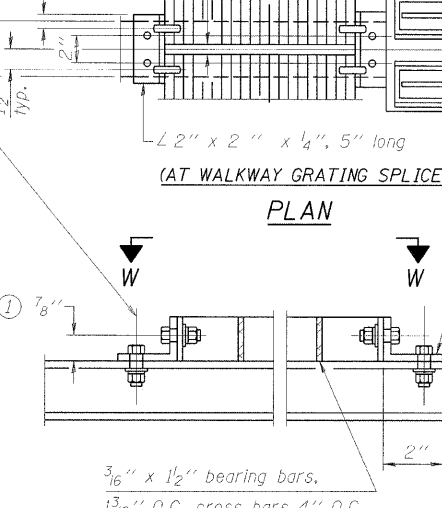


SECTION F-F LIGHTING FIXTURE MOUNTS

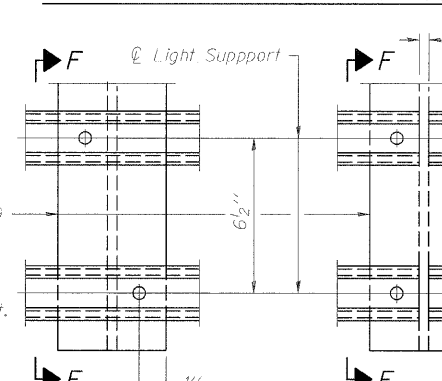


DESIGNED -	200
CHECKED -	EXAMINED
DRAWN -	PASSED
CHECKED -	ENGINEER OF BRIDGES AND STRUCTURES

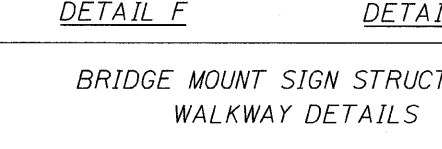
WALKWAY GRATING CONTINUOUS



AT WALKWAY GRATING SPLICE

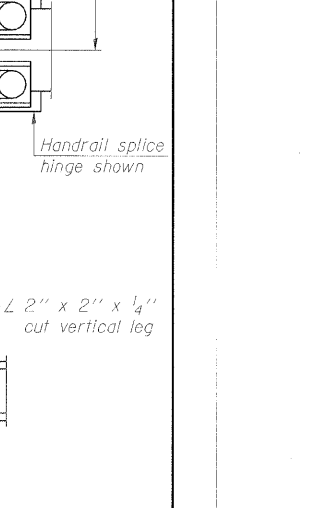


DETAIL E

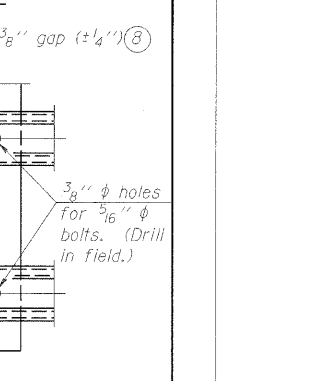


DESIGNED -	200
CHECKED -	EXAMINED
DRAWN -	PASSED
CHECKED -	ENGINEER OF BRIDGES AND STRUCTURES

DETAIL G



DETAIL F



DESIGNED -	200
CHECKED -	EXAMINED
DRAWN -	PASSED
CHECKED -	ENGINEER OF BRIDGES AND STRUCTURES

BRIDGE MOUNT SIGN STRUCTURES  
WALKWAY DETAILS

OGDEN AVE.

SHEET NO.	F.A. RTE.	SECTION	COUNTY	TOTAL SHEET NO.
	90/94	(0202.6-2P, ETC., 1415 & 1517R-7)	COOK	246 119
SHEETS	CONTRACT NO.			62408
FED. ROAD DIST. NO. - ILLINOIS FED. AID PROJECT				

NOTES

- Drilling holes in grating may be done in shop or field, based on Contractor's preference and subject to accurate alignment. Field drilled holes must be touched up with galvanized paint.
- Horizontal rail member shall be continuous thru 1 1/4" Std. pipe. Provide 7/16" hole in 1 1/4" Std. pipe for 3/8" bolt. Field drill 7/16" hole in horizontal rail member. Provide washer and locknut for bolt. (Use 5/16" eyebolts in 7/16" holes on top rail at ends only.)
- Install standard force-fit end caps or weld 1/8" end plates with 1/8" c.f.w. and grind smooth. (All rail ends.)
- 3/8" (± 1/4") gap between grating panels at splice.
- Chain to be type 304L stainless steel suitable for prolonged exterior exposure. Approximately 3'-6" long chain per location. Maximum sag with handrail erected - 4".
- 1/8" x 1/2" x 2" welded to handrail posts to protect locations that contact grating.
- Extrusions may be used in lieu of details shown, with approval by Engineer.
- Field cut ends of light support channels shall be free of burrs or hazardous projections and coated with zinc-rich primer or equivalent.