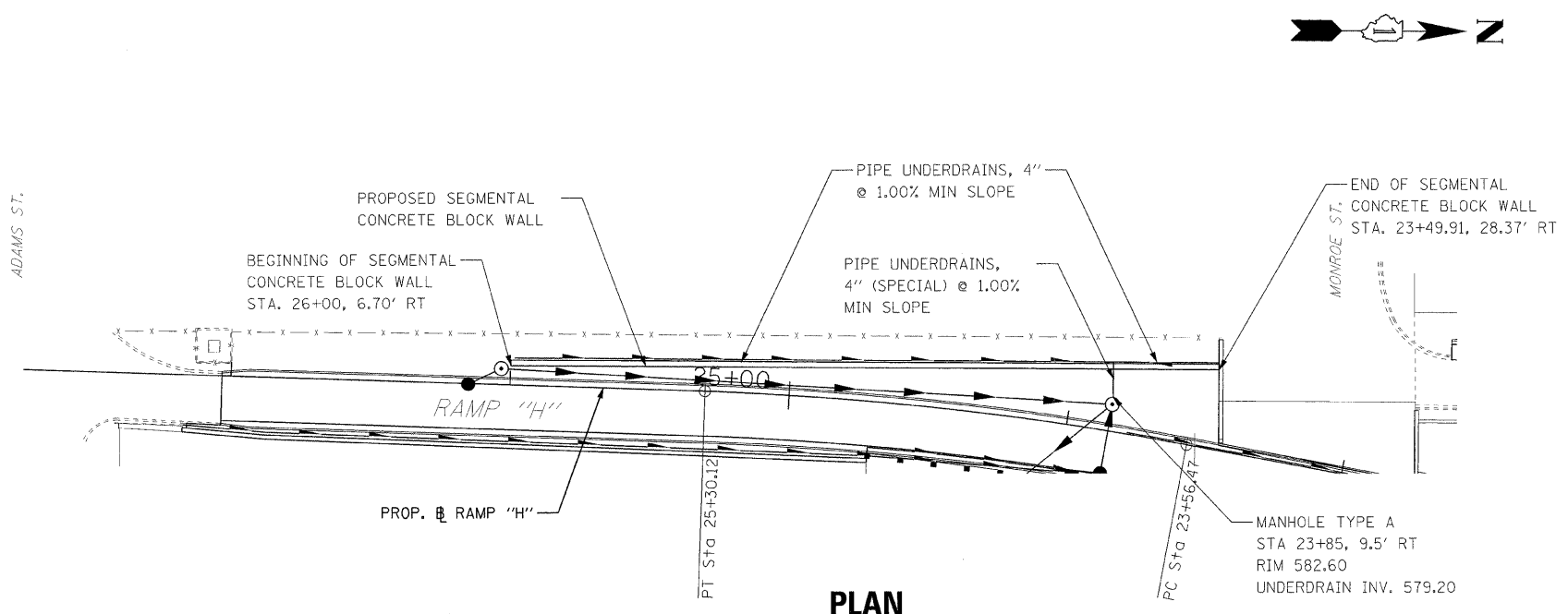
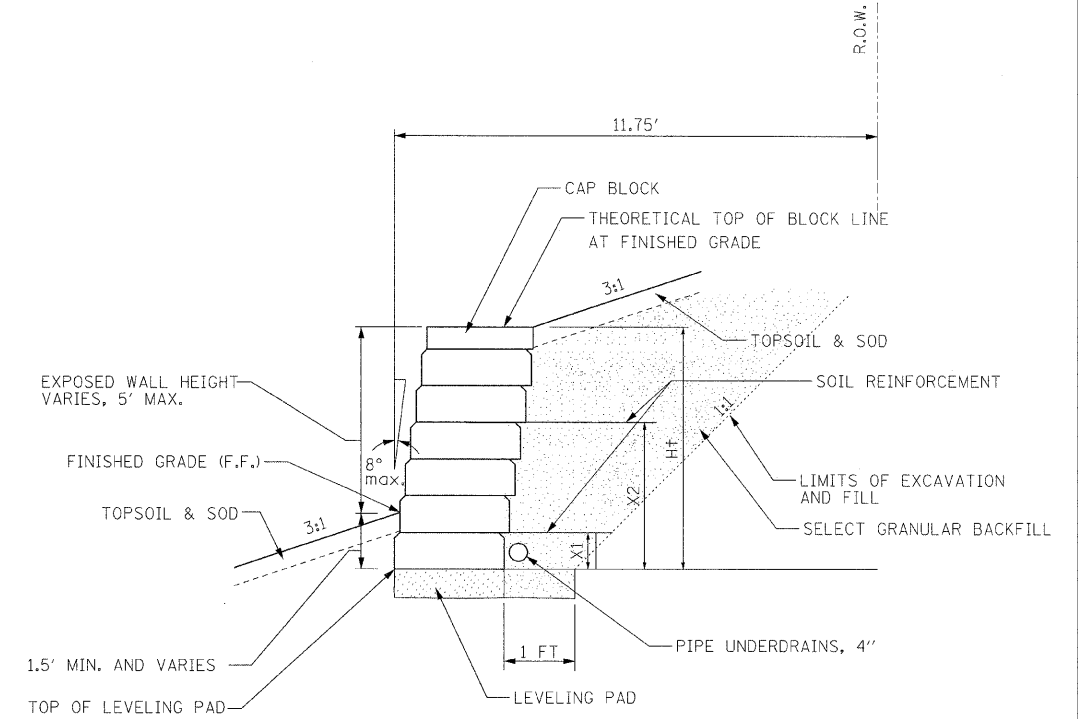


F.A.I. RTE.	SECTION	COUNTY	TOTAL SHEETS	SHEET NO.
90/94	0202-6-2P, ETC 1415 & 1517R-7	COOK	246	124
STA. 35+00		TO STA. 50+00		
FED. ROAD DIST. NO.		ILLINOIS FED. AID PROJECT		
CONTRACT NO. 6240B				



PLAN

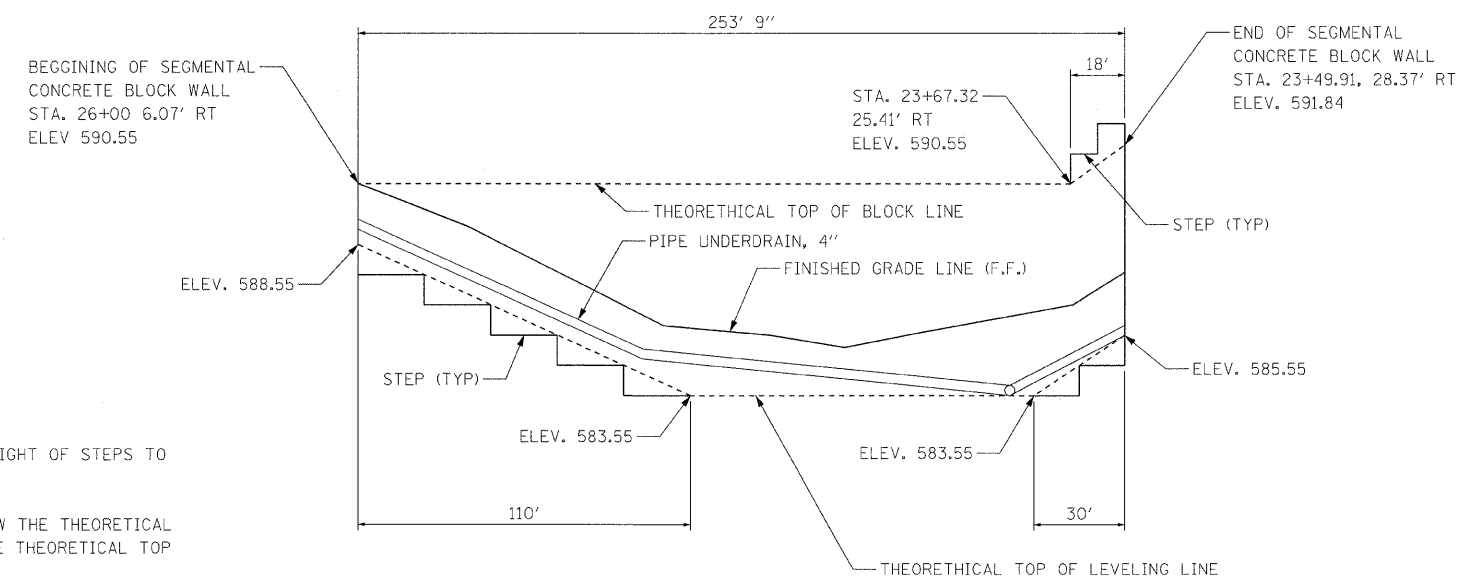
NOTE: STATIONS AND OFFSETS FROM BASELINE OF RAMP H



TYPICAL SECTION

NOTES:
SOIL REINFORCING TYPE, LENGTH, LOCATION; H1, X1, X2 TO BE DETERMINED BY FABRICATOR AND SHOWN IN THE SHOP DRAWINGS. LIMITS OF EXCAVATION AND FILL MAY VARY DEPENDING ON REINFORCING.

BLOCKS SHALL BE TEXTURED WITH A SPLIT ROCK FACE FINISH.



ELEVATION

NOTE: STATIONS AND OFFSETS FROM BASELINE OF RAMP H

NOTES:
ACTUAL LENGTH, LOCATION AND HEIGHT OF STEPS TO BE SHOWN ON SHOP DRAWINGS.

NO STEPS WILL BE ALLOWED BELOW THE THEORETICAL TOP OF BLOCK LINE OR ABOVE THE THEORETICAL TOP OF LEVELING LINE.

ALL ELEVATIONS ARE GIVEN TO THE FRONT FACE (F.F.) OF THE PROPOSED SEGMENTAL CONCRETE BLOCK WALL.

ILLINOIS DEPARTMENT OF TRANSPORTATION
SEGMENTAL CONCRETE BLOCK WALL
 I-90/94 KENNEDY EXPRESSWAY
 STA. 34+00 TO STA. 38+00
 SCALE : 1" = NTS DRAWN BY : MS
 DATE : 02/06/09 CHECKED BY : GB

DATE	
BY	
PLAN	
NO.	
NO.	
NO.	
NO.	
NO.	
NO.	

DATE	
BY	
PROFILE	
NO.	
NO.	
NO.	
NO.	
NO.	
NO.	