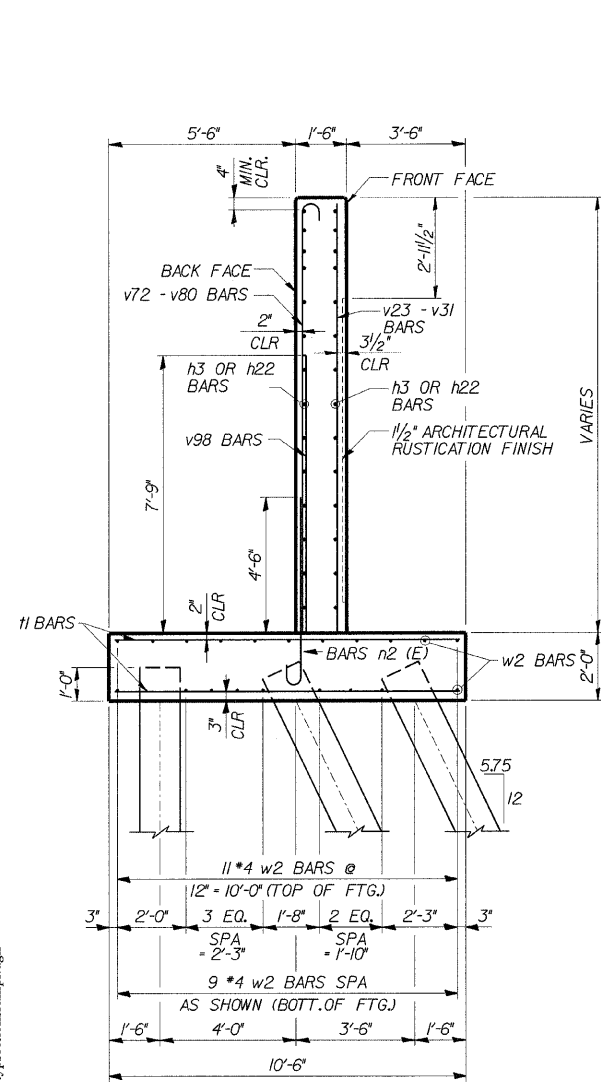
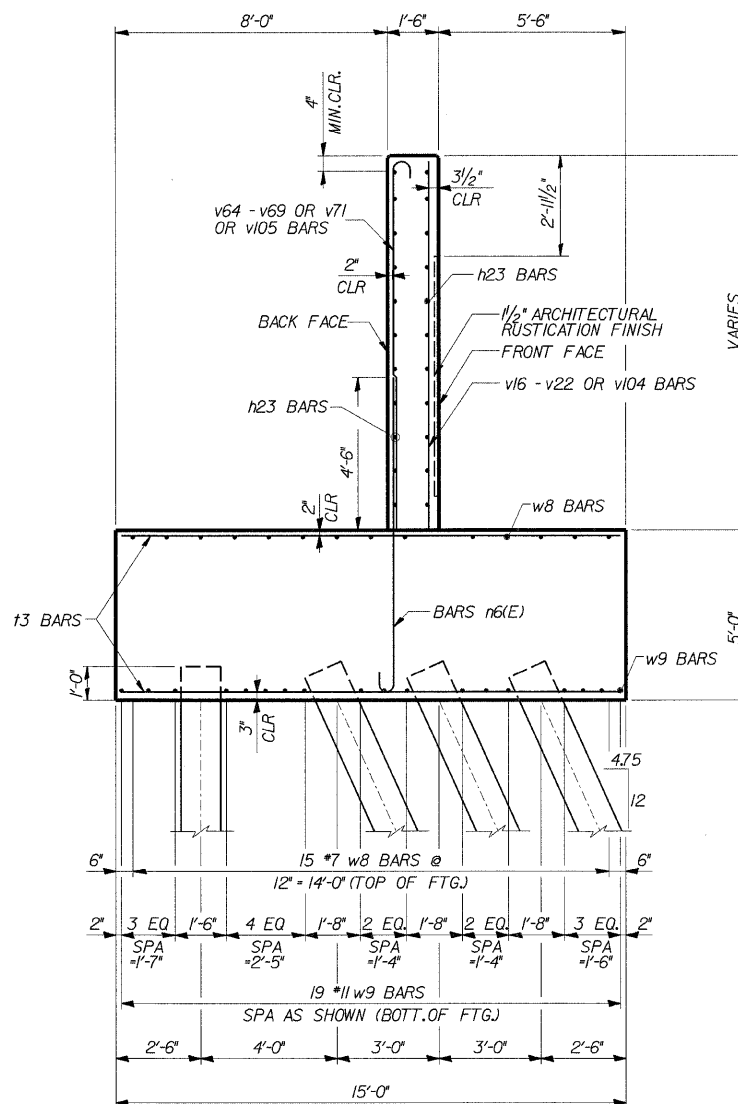


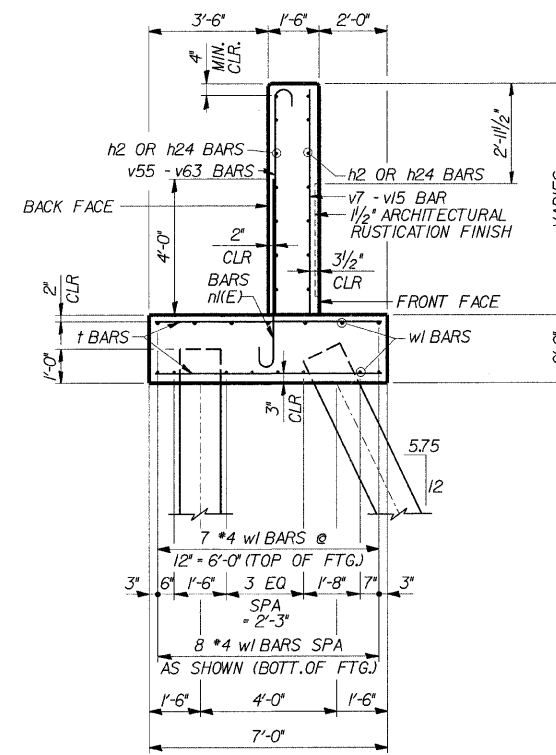
*SECT. (202.6 - 2P, ETC, 1415 & 1517) R-7
CONTRACT NUMBER 62408



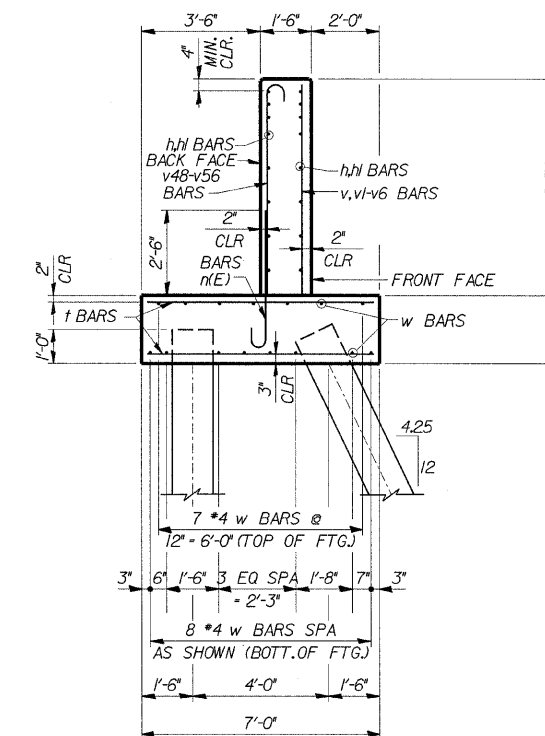
SECTION C-C
STA. 11+99.02 THRU STA. 12+48.60
(FOR DETAILS NOT SHOWN SEE TYPICAL SECTION)



SECTION D-D
STA. 11+52.09 THRU STA. 11+99.02
(FOR DETAILS NOT SHOWN SEE TYPICAL SECTION)



SECTION E-E
STA. 10+98.60 THRU 11+52.09
(FOR DETAILS NOT SHOWN SEE TYPICAL SECTION)



SECTION F-F
STA. 10+59.40 THRU 10+98.60
(FOR DETAILS NOT SHOWN SEE TYPICAL SECTION)

s:\Dept\Structures\301098 180 94-retwall\11L 180 184\RAMP\F\DGN\FILES\13-14-tyr\sections\stamp.dgn
04-Feb-2009 09:29

DESIGNED	CMF
CHECKED	LTX
DRAWN	DPW
CHECKED	JMM

REVISIONS	
NAME	DATE

DLZ 85 W. Algonquin Rd. Ste. 220
Arlington Heights IL 60005

RETAINING WALL RAMP F DETAILS

1-90/94 KENNEDY EXPRESSWAY
(HUBBARDS CAVE TO I-290)
SECT. (202.6 - 2P, ETC, 1415 & 1517) R-7
STATION 13+45 LT 22' TO 10+59 LT 22'
COOK COUNTY
STRUCTURE NUMBER 016-W807