

# BILL OF MATERIAL

STATE OF ILLINOIS  
DEPARTMENT OF TRANSPORTATION

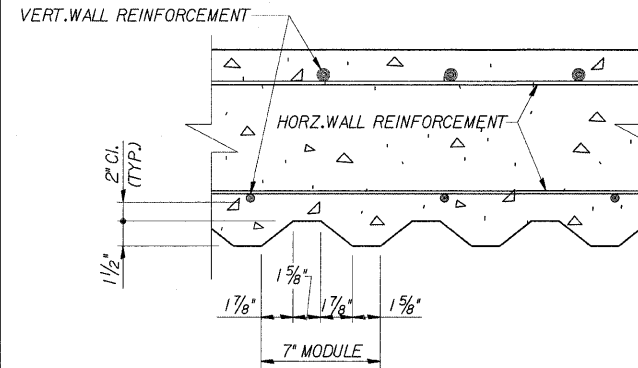
ROUTE NO.	SECTION	COUNTY	TOTAL SHEETS	SHEET NO.
FAP 9094	*	COOK	246	144
FED. ROAD DIST. # 1		ILLINOIS	FED. AID PROJECT	
*SECT. (202.6 - 2P, ETC, 1415 & 1517) R-7 CONTRACT NUMBER 62408				

SHEET NO. 20  
27 SHEETS

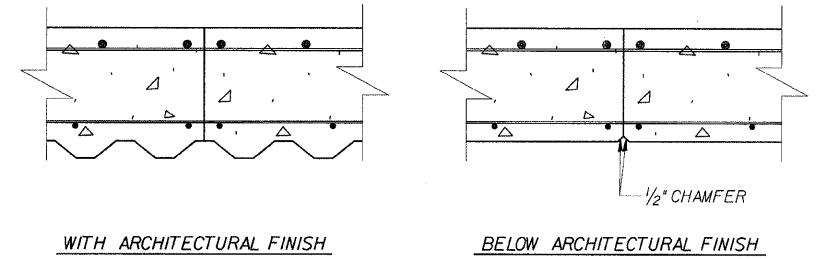
BAR	NO.	SIZE	LENGTH	SHAPE	BAR	NO.	SIZE	LENGTH	SHAPE	BAR	NO.	SIZE	LENGTH	SHAPE
v	6	#4	3'-7"	U	v54	4	#5	5'-9"	U	h	12	#4	2'-5"	U
v1	6	#4	3'-10"	U	v55	6	#6	6'-11"	U	h1	12	#4	19'-5"	U
v2	6	#4	4'-1"	U	v56	6	#6	7'-3"	U	h2	56	#4	3'-9"	U
v3	6	#4	4'-4"	U	v57	6	#6	7'-6"	U	h3	48	#4	29'-8"	U
v4	6	#4	4'-7"	U	v58	6	#6	8'-10"	U	h4	42	#4	19'-11"	U
v5	6	#4	4'-11"	U	v59	6	#6	8'-2"	U	h5	44	#4	17'-8"	U
v6	4	#4	5'-2"	U	v60	6	#6	8'-5"	U	h6	18	#5	23'-10"	U
v7	6	#4	6'-4"	U	v61	6	#6	8'-9"	U	h7	18	#6	2'-7"	U
v8	6	#4	6'-7"	U	v62	6	#6	9'-1"	U	h8	36	#5	3'-0"	U
v9	6	#4	6'-11"	U	v63	6	#6	9'-4"	U	h9	36	#6	3'-6"	U
v10	6	#4	7'-2"	U	v64	6	#6	9'-2"	U	n10	12	#5	8'-2"	U
v11	6	#4	7'-6"	U	v65	6	#6	9'-5"	U	h11	4	#5	4'-7"	U
v12	6	#4	7'-10"	U	v66	6	#6	9'-9"	U	h12	10	#5	7'-8"	U
v13	6	#4	8'-1"	U	v67	6	#6	10'-0"	U	n13	4	#5	4'-8"	U
v14	6	#4	8'-5"	U	v68	6	#6	10'-4"	U	h14	2	#5	3'-7"	U
v15	6	#4	8'-8"	U	v69	6	#6	10'-8"	U	h15	2	#5	4'-5"	U
v16	6	#4	8'-6"	U	v70	58	#6	11'-8"	U	h16	2	#5	3'-0"	U
v17	6	#4	8'-10"	U	v71	6	#6	11'-0"	U	h17	6	#4	8'-2"	U
v18	6	#4	9'-2"	U	v72	2	#6	12'-4"	U	h18	4	#4	4'-7"	U
v19	6	#4	9'-5"	U	v73	6	#6	12'-8"	U	h19	5	#4	7'-8"	U
v20	6	#4	9'-9"	U	v74	6	#6	13'-0"	U	h20	2	#4	4'-8"	U
v21	6	#4	10'-0"	U	v75	7	#6	13'-3"	U	h21	3	#4	3'-7"	U
v22	6	#4	10'-4"	U	v76	6	#6	13'-7"	U	h22	28	#4	2'-3"	U
v23	2	#4	11'-8"	U	v77	6	#6	13'-10"	U	h23	48	#4	24'-2"	U
v24	6	#4	12'-0"	U	v78	6	#6	14'-2"	U	h24	20	#4	25'-2"	U
v25	6	#4	12'-4"	U	v79	6	#6	14'-5"	U					
v26	6	#4	12'-7"	U	v80	7	#6	14'-9"	U	n(E)	40	#6	4'-10"	U
v27	6	#4	12'-11"	U	v81	6	#6	17'-0"	U	n(E)	107	#6	6'-4"	U
v28	6	#4	13'-2"	U	v82	6	#6	17'-3"	U	n2(E)	99	#7	7'-0"	U
v29	6	#4	13'-6"	U	v83	6	#6	17'-7"	U	n3(E)	120	#8	10'-3"	U
v30	6	#4	13'-9"	U	v84	6	#6	17'-10"	U	n4(E)	85	#8	11'-5"	U
v31	6	#4	14'-1"	U	v85	7	#6	18'-1"	U	n5(E)	21	#5	5'-0"	U
v32	6	#4	16'-4"	U	v86	6	#6	18'-4"	U	n6(E)	93	#6	9'-11"	U
v33	6	#4	16'-8"	U	v87	6	#6	18'-6"	U					
v34	6	#4	16'-11"	U	v88	6	#6	18'-9"	U	s	8	#4	8'-8"	U
v35	6	#4	17'-2"	U	v89	6	#6	19'-0"	U					
v36	6	#4	17'-5"	U	v90	7	#6	19'-2"	U	t	188	#5	6'-8"	U
v37	6	#4	17'-8"	U	v91	41	#6	12'-2"	U	t1	133	#6	10'-2"	U
v38	6	#4	17'-10"	U	v92	7	#6	18'-11"	U	t2	303	#6	12'-8"	U
v39	6	#4	18'-1"	U	v93	7	#6	19'-1"	U	t3	96	#5	14'-8"	U
v40	6	#4	18'-4"	U	v94	7	#6	19'-4"	U					
v41	6	#4	18'-7"	U	v95	7	#6	19'-6"	U	w	30	#4	20'-5"	U
v42	6	#4	18'-3"	U	v96	7	#6	19'-10"	U	w1	30	#4	27'-5"	U
v43	6	#4	18'-6"	U	v97	8	#6	20'-2"	U	w2	40	#4	25'-6"	U
v44	6	#4	18'-8"	U	v98	48	#6	7'-9"	U	w3	50	#4	33'-10"	U
v45	6	#4	18'-11"	U	v99	38	#5	18'-7"	U	w4	50	#4	18'-8"	U
v46	6	#4	19'-3"	U	v100	3	#4	2'-6"	U	w5	4	#4	5'-0"	U
v47	5	#4	19'-7"	U	v101	3	#4	2'-8"	U	w6	9	#4	8'-10"	U
v48	6	#5	4'-2"	U	v102	1	#4	19'-6"	U	w7	8	#4	7'-4"	U
v49	6	#5	4'-5"	U	v103	1	#4	19'-9"	U	w8	45	#7	17'-11"	U
v50	6	#5	4'-8"	U	v104	5	#4	10'-8"	U	w9	57	#11	2'-7"	U
v51	6	#5	4'-11"	U	v105	5	#6	11'-4"	U					
v52	6	#5	5'-2"	U						x1	5	#4	10'-0"	U
v53	6	#5	5'-6"	U						x2	6	#4	11'-0"	U
										y1	10	#4	6'-0"	U
										y2	11	#4	6'-6"	U

REINFORCEMENT BARS DESIGNATED (E) SHALL BE EPOXY COATED

BAR	A		B		C	
	FT.	IN.	FT.	IN.	FT.	IN.
h6	8	2	7	6		
h7	7	6	6	6		
h8	2	2	0	10		
h9	2	6	1	0		
n(E)	4	2	0	8	0	6
n(E)	5	8	0	8	0	6
n2(E)	6	2	0	10	0	7
n3(E)	9	4	0	11	0	8
n4(E)	10	6	0	11	0	8
n5(E)	4	4	0	10	0	5
n6(E)	9	3	0	8	0	6
w6	3	5	3	5		
w7	2	4 1/2	2	4 1/2		
x1	5	0	5	0		
x2	5	6	5	6		
y1	5	0	1	0		
y2	5	6	1	0		
v48	3	7	0	7	0	5
v49	3	10	0	7	0	5
v50	4	1	0	7	0	5
v51	4	4	0	7	0	5
v52	4	7	0	7	0	5
v53	4	11	0	7	0	5
v54	5	2	0	7	0	5
v55	6	3	0	8	0	6
v56	6	7	0	8	0	6
v57	6	10	0	8	0	6
v58	7	2	0	8	0	6
v59	7	6	0	8	0	6
v60	7	9	0	8	0	6
v61	8	1	0	8	0	6
v62	8	5	0	8	0	6
v63	8	8	0	8	0	6
v64	8	9	0	8	0	6
v65	8	6	0	8	0	6
v66	9	1	0	8	0	6
v67	9	4	0	8	0	6
v68	9	8	0	8	0	6
v69	10	0	0	8	0	6
v71	10	4	0	8	0	6
v72	11	8	0	8	0	6
v73	12	0	0	8	0	6
v74	12	4	0	8	0	6
v75	12	7	0	8	0	6
v76	12	11	0	8	0	6
v77	13	2	0	8	0	6
v78	13	6	0	8	0	6
v79	13	9	0	8	0	6
v80	14	1	0	8	0	6
v81	16	4	0	8	0	6
v82	16	7	0	8	0	6
v83	16	11	0	8	0	6
v84	17	2	0	8	0	6
v85	17	5	0	8	0	6
v86	17	8	0	8	0	6
v87	17	10	0	8	0	6
v88	18	1	0	8	0	6
v89	18	4	0	8	0	6
v90	18	6	0	8	0	6
v92	18	3	0	8	0	6
v93	18	5	0	8	0	6
v94	18	8	0	8	0	6
v95	18	10	0	8	0	6
v96	19	2	0	8	0	6
v97	19	6	0	8	0	6
v100	1	8	0	10	0	0
v101	1	10	0	10	0	0
v105	10	8	0	8	0	6

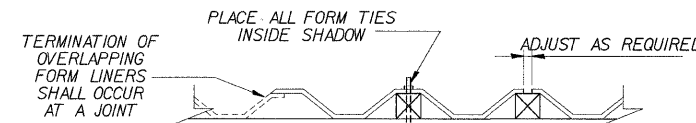


SECTION THRU ARCHITECTURAL FINISH

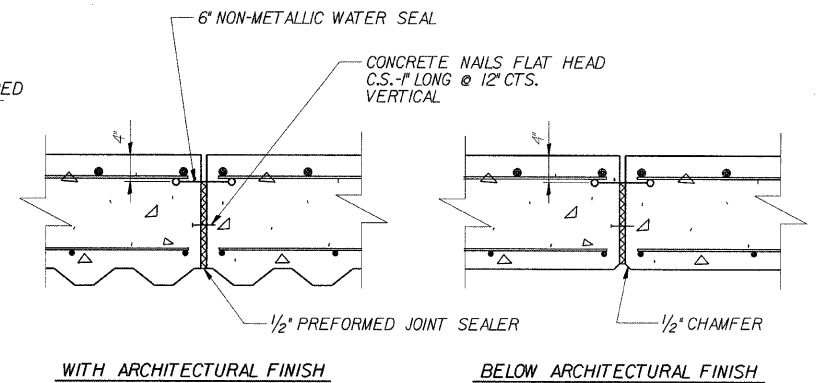


CONSTRUCTION JOINT DETAIL

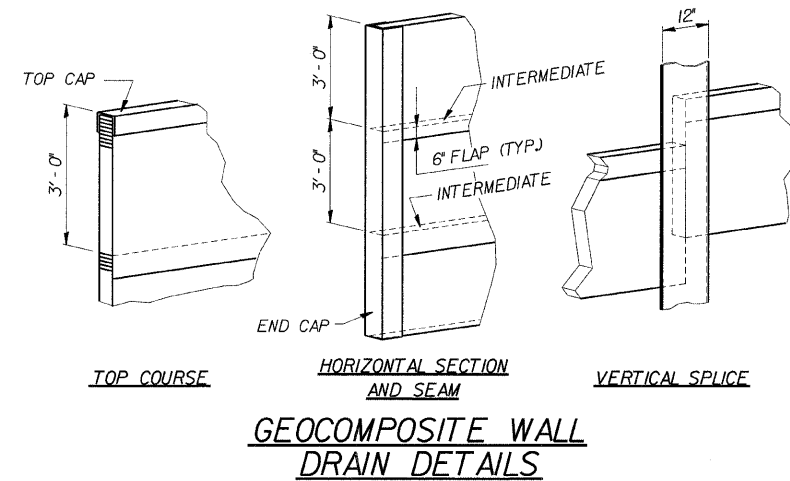
NOTE: 6" NON-METALLIC WATER SEAL AND PREFORMED JOINT SEALER SHALL BE INCLUDED IN THE COST OF CONCRETE STRUCTURES



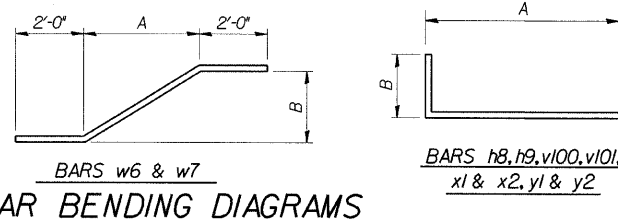
SUGGESTED FORMWORK DETAIL



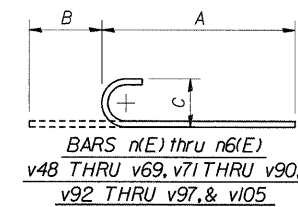
EXPANSION JOINT DETAIL



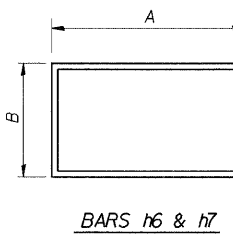
GEOCOMPOSITE WALL DRAIN DETAILS



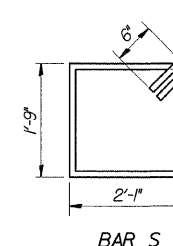
BAR BENDING DIAGRAMS



BARS n(E) THRU n6(E)  
v48 THRU v69, v71 THRU v90,  
v92 THRU v97, & v105



BARS h6 & h7



BAR S

04-Feb-2009 08:32 s:\Dept\Structures\300099 190 184\RAMP\DCNTFILES\20-REBAR.dgn

DESIGNED	CMF
CHECKED	LTX
DRAWN	DPW
CHECKED	JMM

REVISIONS	
NAME	DATE

**DLZ** 85 W. Algonquin Rd. Ste. 220  
Arlington Heights IL 60005

**RETAINING WALL RAMP F DETAILS**  
I-90/94 KENNEDY EXPRESSWAY  
(HUBBARDS CAVE TO I-290)  
SECT. (202.6 - 2P, ETC, 1415 & 1517) R-7  
STATION 13+45 LT 22' TO 10+59 LT 22'  
COOK COUNTY  
STRUCTURE NUMBER 016-W807