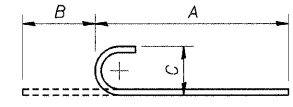


REINFORCEMENT SCHEDULE

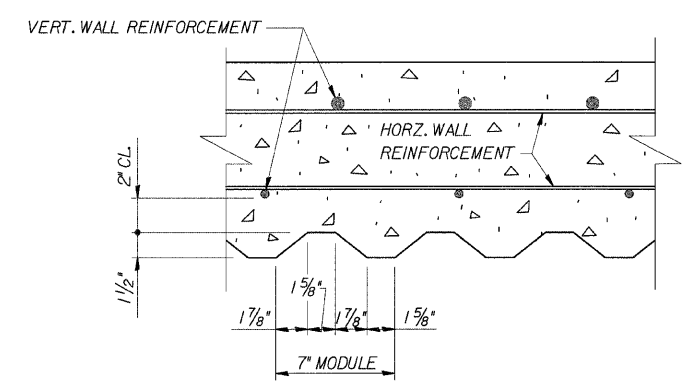
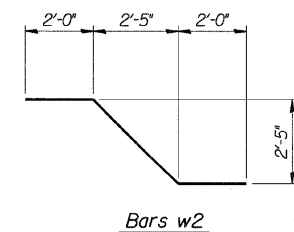
BAR NO.	NO.	SIZE	LENGTH	SHAPE	BAR NO.	NO.	SIZE	LENGTH	SHAPE
v	6	#4	2'-5"	—	v56	6	#6	7'-1"	—
v1	6	#4	2'-9"	—	v57	6	#6	7'-5"	—
v2	6	#4	3'-1"	—	v58	6	#6	7'-10"	—
v3	6	#4	3'-5"	—	v59	6	#6	8'-2"	—
v4	6	#4	3'-9"	—	v60	6	#6	8'-6"	—
v5	7	#4	4'-1"	—	v61	6	#6	8'-10"	—
v6	6	#4	4'-5"	—	v62	6	#6	9'-3"	—
v7	6	#4	4'-9"	—	v63	6	#6	9'-7"	—
v8	6	#4	5'-1"	—	v64	6	#6	9'-11"	—
v9	6	#4	5'-5"	—	v65	6	#6	10'-3"	—
v10	5	#4	5'-9"	—	v66	6	#6	10'-8"	—
v11	7	#4	5'-0"	—	v67	6	#6	11'-0"	—
v12	6	#4	5'-4"	—	v68	6	#6	11'-3"	—
v13	6	#4	5'-8"	—	v69	6	#6	11'-7"	—
v14	6	#4	6'-0"	—	v70	6	#6	11'-10"	—
v15	7	#4	6'-5"	—	v71	6	#6	12'-1"	—
v16	6	#4	6'-9"	—	v72	6	#5	12'-4"	—
v17	6	#4	7'-1"	—	v73	11	#5	12'-5"	—
v18	6	#4	7'-5"	—	v74	11	#5	12'-7"	—
v19	6	#4	7'-10"	—	v75	11	#5	12'-10"	—
v20	7	#4	8'-2"	—	v76	11	#5	13'-0"	—
v21	6	#4	8'-6"	—	v77	10	#5	13'-2"	—
v22	6	#4	8'-10"	—	v78	11	#5	13'-5"	—
v23	6	#4	9'-3"	—	v79	11	#5	13'-9"	—
v24	6	#4	9'-7"	—	v80	11	#5	14'-1"	—
v25	7	#4	9'-11"	—	v81	11	#5	14'-5"	—
v26	6	#4	10'-4"	—	v82	11	#5	14'-9"	—
v27	6	#4	10'-7"	—	v83	3	#5	15'-1"	—
v28	6	#4	10'-10"	—					
v29	6	#4	11'-2"	—	h	20	#4	17'-5"	—
v30	7	#4	11'-5"	—	h1	14	#4	31'-8"	—
v31	6	#4	11'-9"	—	h2	84	#4	31'-9"	—
v32	6	#4	11'-11"	—	h3	52	#4	29'-8"	—
v33	6	#4	12'-1"	—					
v34	6	#4	12'-4"	—	n(E)	65	#6	4'-9"	—
v35	7	#4	12'-7"	—	n(E)	120	#6	5'-2"	—
v36	6	#4	12'-9"	—	n2(E)	120	#6	8'-2"	—
v37	6	#4	13'-1"	—	n3(E)	120	#7	8'-4"	—
v38	6	#4	13'-6"	—					
v39	6	#4	13'-10"	—	t	92	#5	6'-8"	—
v40	7	#4	14'-3"	—	t1	65	#4	6'-8"	—
v41	6	#5	3'-0"	—	t2	342	#5	10'-2"	—
v42	6	#5	3'-4"	—	t3	170	#6	10'-2"	—
v43	6	#5	3'-8"	—					
v44	6	#5	4'-0"	—	w	45	#4	23'-1"	—
v45	6	#5	4'-4"	—	w1	132	#4	31'-5"	—
v46	6	#5	4'-8"	—	w2	8	#4	7'-5"	—
v47	6	#5	5'-0"	—					
v48	6	#5	5'-4"	—					
v49	6	#5	5'-8"	—					
v50	6	#5	6'-0"	—					
v51	5	#5	6'-3"	—					
v52	7	#6	5'-8"	—					
v53	6	#6	6'-0"	—					
v54	6	#6	6'-5"	—					
v55	6	#6	6'-9"	—					

REINFORCEMENT BARS DESIGNATED (E) SHALL BE EPOXY COATED

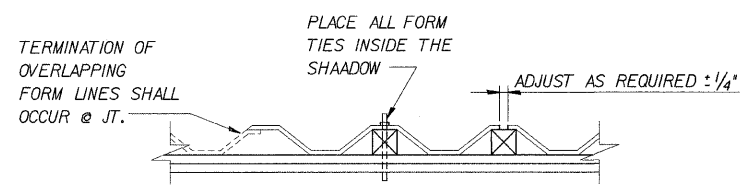
BAR BENDING DIAGRAMS



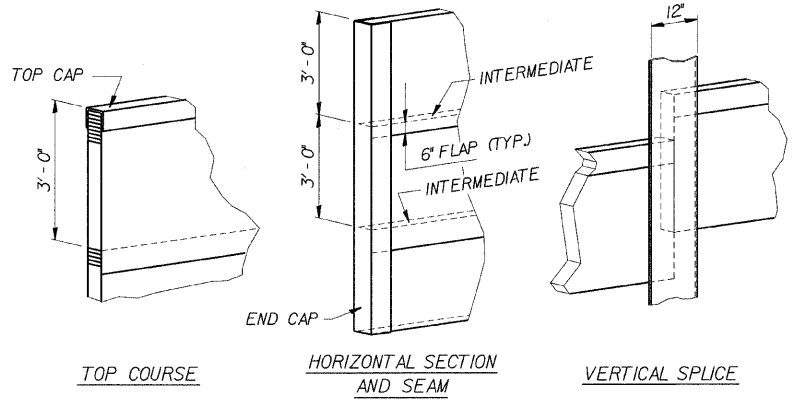
Bar	A		B		C	
	Ft.	In.	Ft.	In.	Ft.	In.
n(E)	4	1	0	8	0	6
n(E)	4	6	0	8	0	6
n2(E)	7	6	0	8	0	6
n3(E)	7	6	0	10	0	7
v41	2	5	0	7	0	5
v42	2	9	0	7	0	5
v43	3	1	0	7	0	5
v44	3	5	0	7	0	5
v45	3	9	0	7	0	5
v46	4	1	0	7	0	5
v47	4	5	0	7	0	5
v48	4	9	0	7	0	5
v49	5	1	0	7	0	5
v50	5	5	0	7	0	5
v51	5	8	0	7	0	5
v52	5	0	0	8	0	6
v53	5	4	0	8	0	6
v54	5	9	0	8	0	6
v55	6	1	0	8	0	6
v56	6	5	0	8	0	6
v57	6	9	0	8	0	6
v58	7	2	0	8	0	6
v59	7	6	0	8	0	6
v60	7	10	0	8	0	6
v61	8	2	0	8	0	6
v62	8	7	0	8	0	6
v63	8	11	0	8	0	6
v64	9	3	0	8	0	6
v65	9	7	0	8	0	6
v66	10	0	0	8	0	6
v67	10	4	0	8	0	6
v68	10	7	0	8	0	6
v69	10	11	0	8	0	6
v70	11	2	0	8	0	6
v71	11	5	0	8	0	6
v72	11	9	0	7	0	5
v73	11	10	0	7	0	5
v74	12	0	0	7	0	5
v75	12	3	0	7	0	5
v76	12	5	0	7	0	5
v77	12	7	0	7	0	5
v78	12	10	0	7	0	5
v79	13	2	0	7	0	5
v80	13	6	0	7	0	5
v81	13	10	0	7	0	5
v82	14	2	0	7	0	5
v83	14	6	0	7	0	5



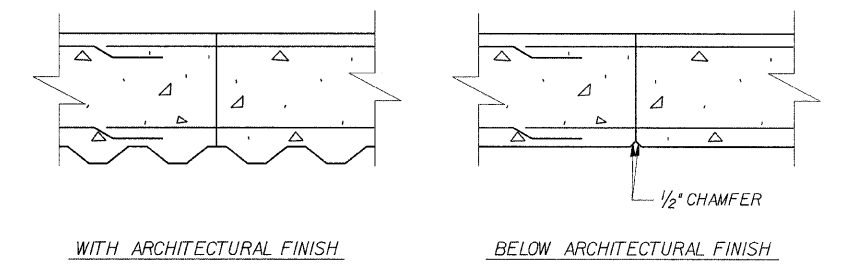
SECTION THRU ARCHITECTURAL FINISH



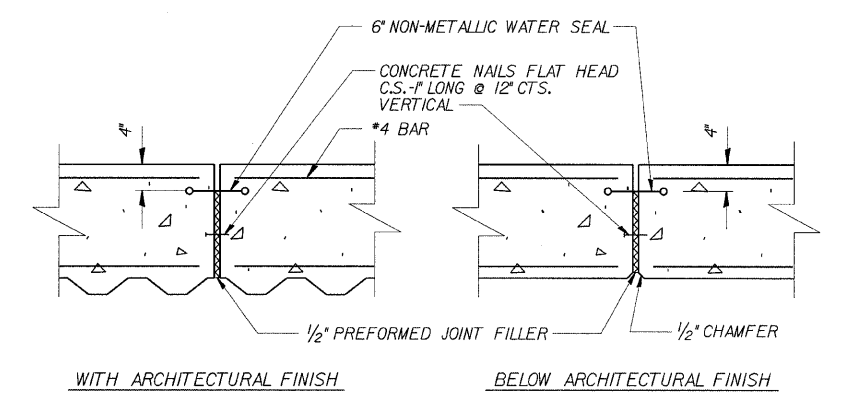
SUGGESTED FORMWORK DETAIL



GEOCOMPOSITE WALL DRAIN DETAILS



CONSTRUCTION JOINT DETAIL



NOTE: 6" NON-METALLIC WATER SEAL AND PREFORMED JOINT SEALER SHALL BE INCLUDED IN THE COST OF CONCRETE STRUCTURES

EXPANSION JOINT DETAIL

04-Feb-2009 09:36 s:\Dep\Structures\300089 190 94-retwall\ILL 190 194\RAMPH\DCNF\FILES\15-REBAR.dgn

DESIGNED	CMF
CHECKED	LTX
DRAWN	DPW
CHECKED	JMM

DLZ
DLZ Illinois, Inc.
85 W. Algonquin Rd. Ste. 220
Arlington Heights IL 60005

REVISIONS	
NAME	DATE

RETAINING WALL RAMP H DETAILS
I-90/94 KENNEDY EXPRESSWAY
(HUBBARDS CAVE TO I-290)
SECT.(202.6 - 2P, ETC, 1415 & 1517) R-7
STATION 27+17, LT. 20.5' TO 24+70, LT. 22'
(RAMP F BASELINE)
COOK COUNTY
STRUCTURE NUMBER 016-W808