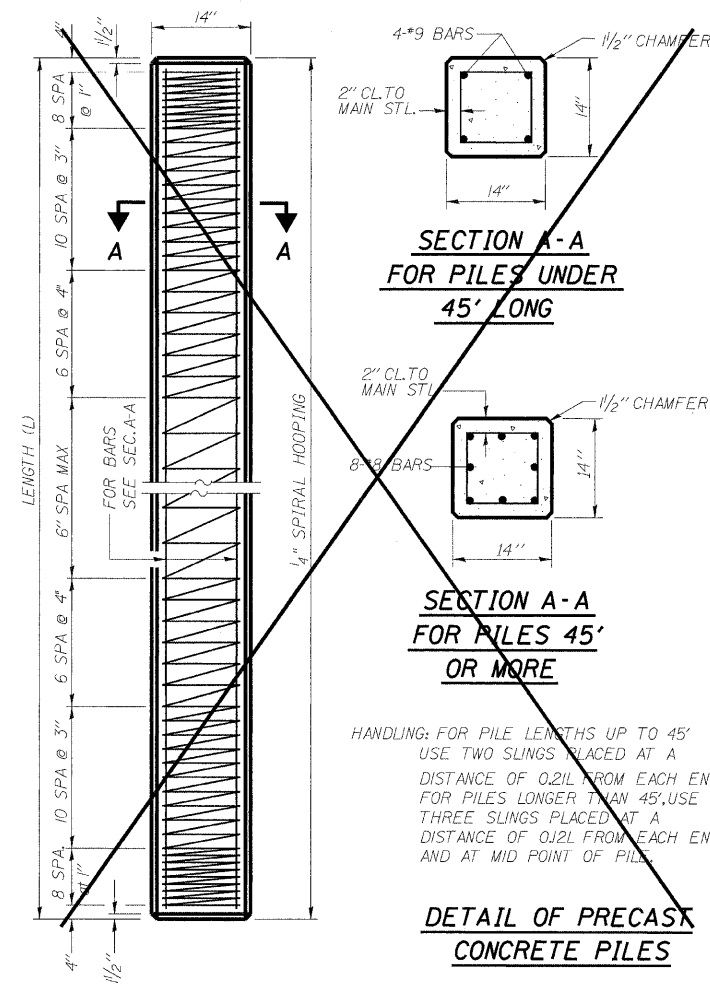
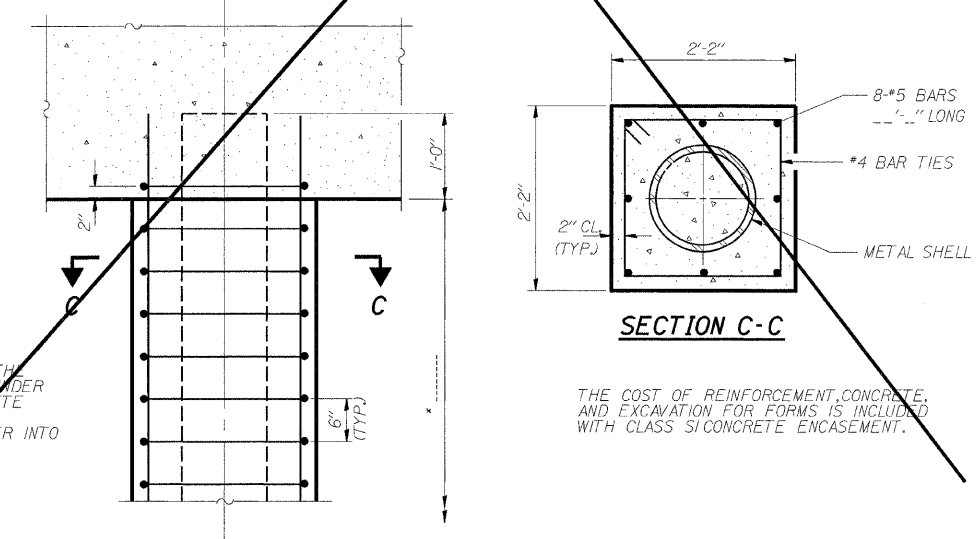
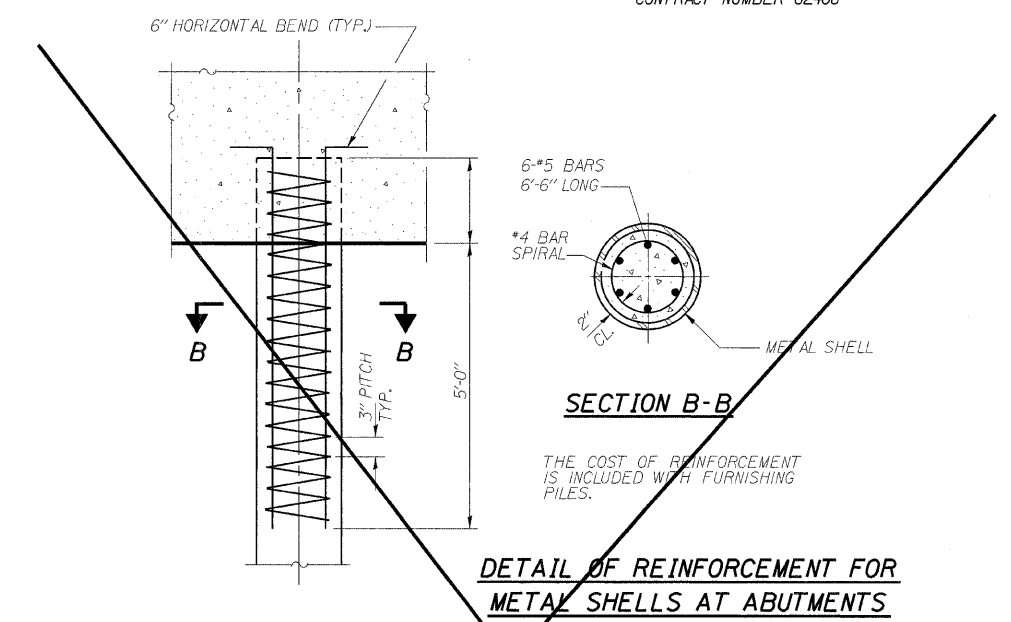
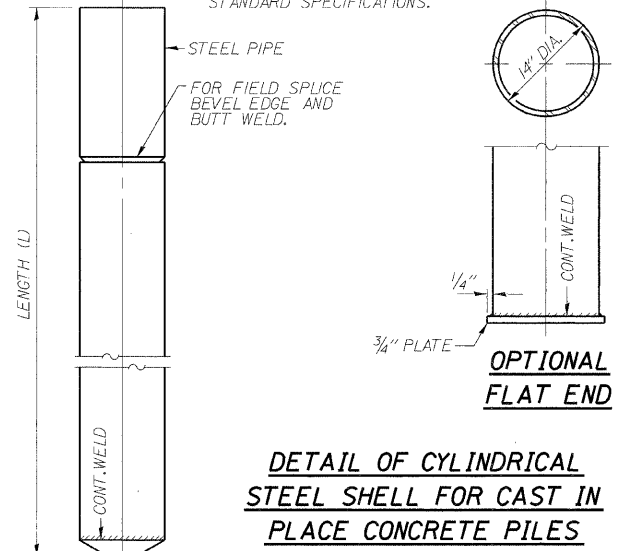


\*SHEET (202.6 - 2P, ETC, 1415 & 1517) R-7  
CONTRACT NUMBER 62408



**NOTES:**  
DRIVING AND BEARING ENDS OF PIPE SHALL BE CUT SQUARE. THE THICKNESS OF THE SHELL SHALL BE 0.250 INCHES WITH A TOLERANCE OF 5%. THE SHELL SHALL BE ACCORDING TO ARTICLE 1006.05(A) OF THE STANDARD SPECIFICATIONS.



\* IF A PORTION OF THE PILE ENCASEMENT IS UNDER WATER, CLASS 'SI' CONCRETE ENCASEMENT SHALL BE TREMMIED UNDER WATER INTO FORMS AS NECESSARY.

THE COST OF REINFORCEMENT, CONCRETE, AND EXCAVATION FOR FORMS IS INCLUDED WITH CLASS 'SI' CONCRETE ENCASEMENT.

**CONCRETE PILE DETAILS**

RETAININGWALL RAMP H  
14" DIA METAL SHELL PILES  
I-90/94 KENNEDY EXPRESSWAY  
(HUBBARDS CAVE TO I-290)  
SECT. (202.6 - 2P, ETC, 1415 & 1517) R-7  
STATION 27+17, LT. 20.5' TO 24+70, LT. 22'  
(RAMP F BASELINE)  
COOK COUNTY  
STRUCTURE NUMBER 016-W808

REVISIONS	
NAME	DATE

**DLZ**  
DLZ Illinois, Inc.  
85 W. Algonquin Rd. Ste. 220  
Arlington Heights IL 60005

s:\Dept\Structures\301099 190 94-retwall\11. 190 194\RAMPH\DKNFILES\09-10-16-RHplan.dgn

04-Feb-2009 09:35