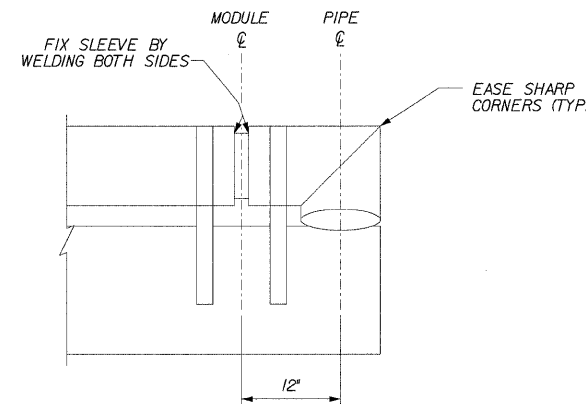
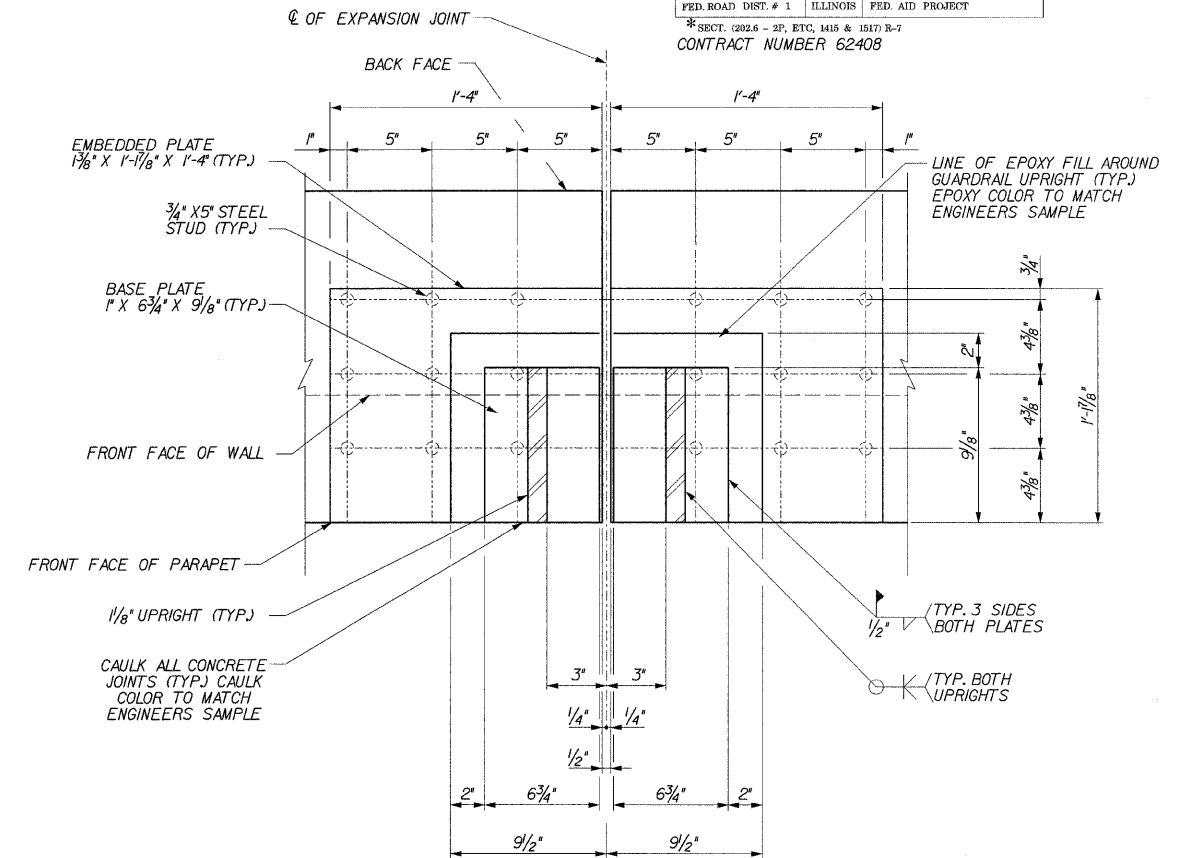


**EMBEDDED PLATE, GUARDRAIL UPRIGHT**  
(AT TOP OF PLATE)

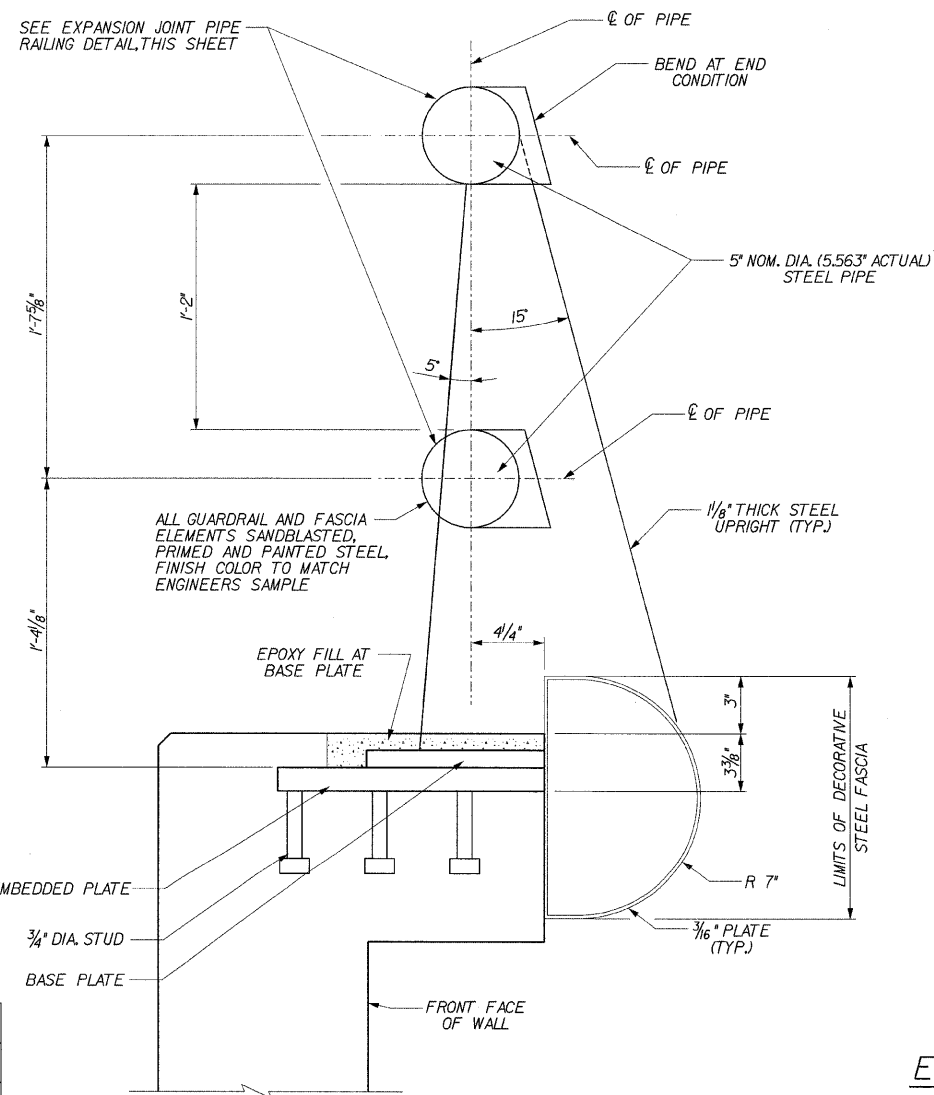


**GUARDRAIL END CONDITION PLAN**

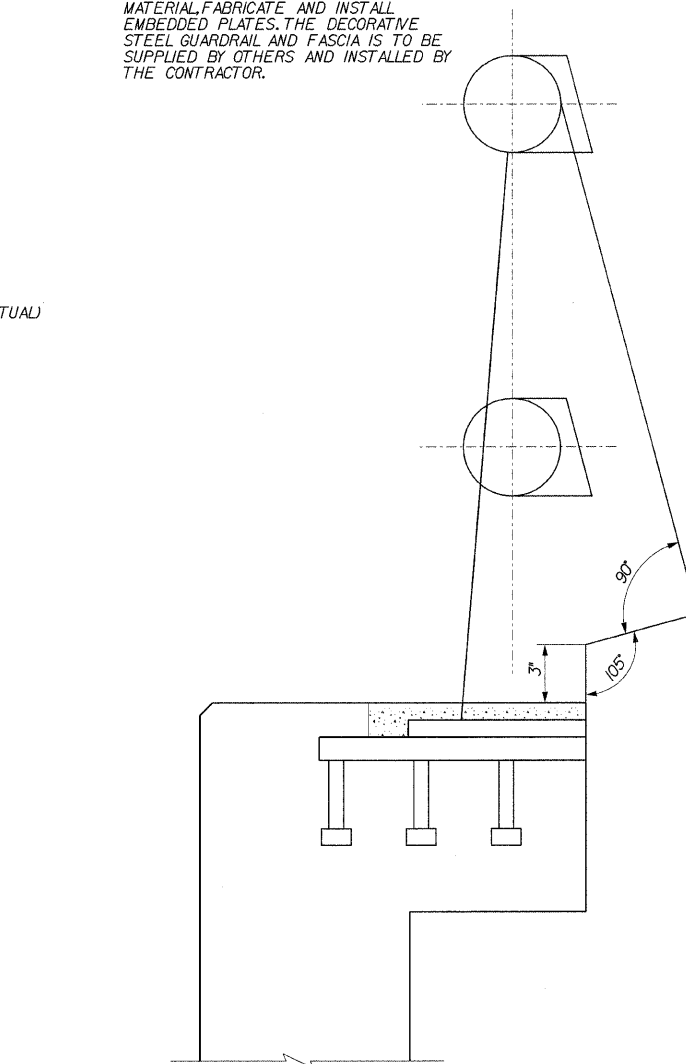
NOTE:  
THE CONTRACTOR IS TO FURNISH MATERIAL, FABRICATE AND INSTALL EMBEDDED PLATES. THE DECORATIVE STEEL GUARDRAIL AND FASCIA IS TO BE SUPPLIED BY OTHERS AND INSTALLED BY THE CONTRACTOR.



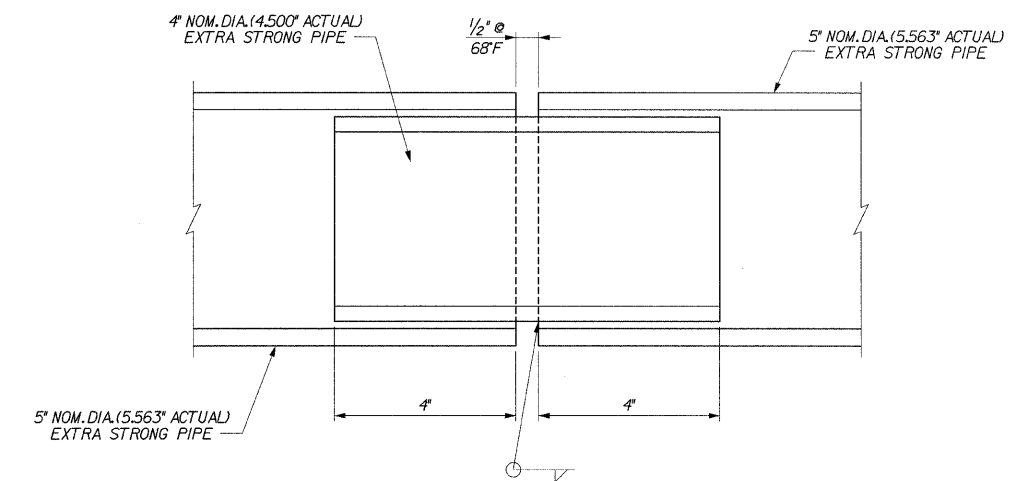
**EMBEDDED PLATE, GUARDRAIL UPRIGHT AT EXPANSION JOINT**  
(AT TOP OF PLATE)



**ELEVATION W/DECORATIVE FASCIA**



**ELEVATION W/OUT DECORATIVE FASCIA**  
(SEE ELEVATION W/DECORATIVE FASCIA FOR DIMENSIONS)



**EXPANSION JOINT PIPE RAILING**  
(SHOWN ALONG Q OF PIPE)

c:\Dopt\Structures\301999\190 94-reswall\ILL 190 194\RAMPK\DCNFILES\08-RailingDetails.dgn 04-Feb-2009 09:38

DESIGNED	DPW
CHECKED	ASP
DRAWN	MJS
CHECKED	MBJ

REVISIONS	
NAME	DATE



85 W. Algonquin Rd. Ste. 220  
Arlington Heights IL 60005

**RETAINING WALL RAMP K  
RAILING SYSTEM DETAILS**  
1-90/94 KENNEDY EXPRESSWAY  
(HUBBARDS CAVE TO I-290)  
SECT. (202.6 - 2P, ETC, 1415 & 1517) R-7  
STATION 1+54.36, 33.5' RT TO 2+63.20, 37.7' RT  
(RAMP F BASELINE)  
COOK COUNTY  
STRUCTURE NUMBER 016-W809