

STATE OF ILLINOIS
DEPARTMENT OF TRANSPORTATION

ROUTE NO.	SECTION	COUNTY	TOTAL SHEETS	SHEET NO.	SHEET NO. 01
F.A.P. 90/94	*	COOK	246	183	09 SHEETS
FED. ROAD DIST. NO. 7	ILLINOIS	FED. AID PROJECT			

*SECT. (202.6-2P, ETC, 1415 & 1517)R-7
Contract # 62408

GENERAL NOTES

1. REINFORCEMENT BARS SHALL CONFORM TO THE REQUIREMENTS OF ASTM A 706 GR 60 (LL MODIFIED). SEE SPECIAL PROVISIONS
2. REINFORCEMENT BARS DESIGNATED (E) SHALL BE EPOXY COATED.
3. EXPOSED EDGES SHALL HAVE A 3/4" CHAMFER.
4. PLAN DIMENSIONS AND DETAILS RELATIVE TO EXISTING PLANS ARE SUBJECT TO ROUTINE VARIATIONS. THE CONTRACTOR SHALL FIELD VERIFY EXISTING DIMENSIONS AND DETAILS AFFECTING NEW CONSTRUCTION AND MAKE NECESSARY APPROVED ADJUSTMENTS PRIOR TO CONSTRUCTION OR ORDERING OF MATERIALS. SUCH VARIATIONS SHALL NOT BE CAUSE FOR ADDITIONAL COMPENSATION FOR A CHANGE IN SCOPE OF WORK, HOWEVER, THE CONTRACTOR WILL BE PAID FOR THE QUANTITY ACTUALLY FURNISHED BASED UPON THE UNIT PRICE BID FOR THE WORK.
5. EXISTING REINFORCEMENT, THAT IS TO BE REUSED IN THE PROPOSED, SHALL BE CLEANED AND STRAIGHTENED.
6. EMBEDDED BARS SHALL BE EPOXY GROUTED, TO THE DEPTH SPECIFIED, IN ACCORDANCE WITH SECTION 584 OF THE STANDARD SPECIFICATIONS.

DESIGN SPECIFICATIONS

AASHTO 2002 SPECIFICATIONS W/ CURRENT INTERIMS

DESIGN STRESSES

$f'_c = 3,500$ psi (CONCRETE)
 $f_y = 60,000$ psi (REINFORCEMENT)

BILL OF MATERIALS


ITEM	UNIT	QUANTITY
CONCRETE STRUCTURES	CU YD	51.0
REMOVAL OF EXISTING STRUCTURES NO. 1	EACH	1
CONCRETE REMOVAL	CU YD	54
REINFORCEMENT BARS, EPOXY COATED	POUND	8,560
POROUS GRANULAR EMBANKMENT	TON	526
REMOVE, SALVAGE, STORE AND INSTALL DECORATIVE STEEL GUARDRAIL, RAMP B	LS	1
FABRICATION AND INSTALLATION OF EMBEDDED PLATES, RAMP B	LS	1
2 1/2" NEOPRENE EXPANSION JOINT	FOOT	24

DLZ ILLINOIS, LLC.
ARLINGTON HEIGHTS, ILLINOIS

Signed: *Paul Anderson*

Date: 02-29-2009

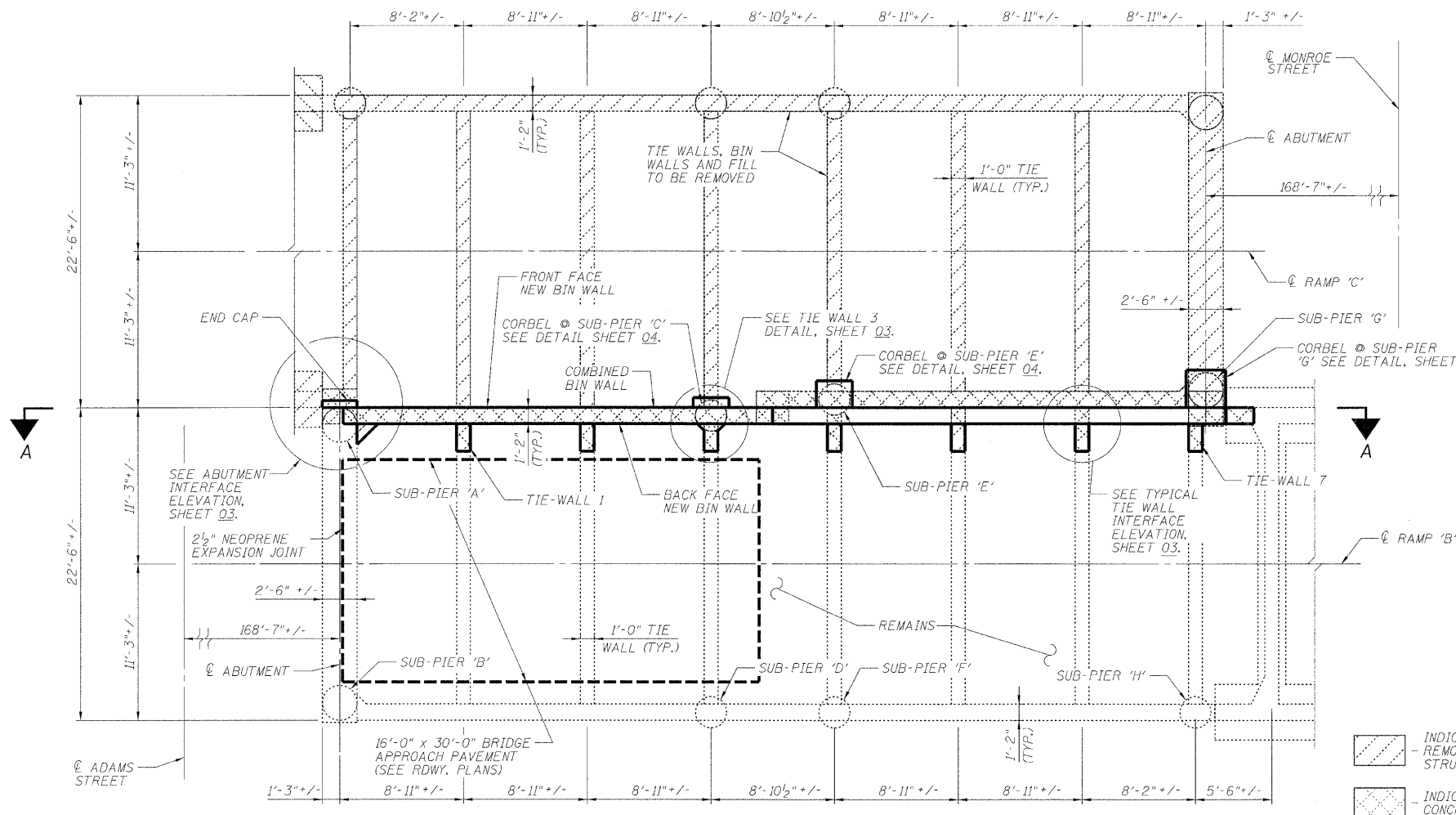
Expiration Date: 11/30/10



APPROVED
FOR STRUCTURAL ADEQUACY ONLY

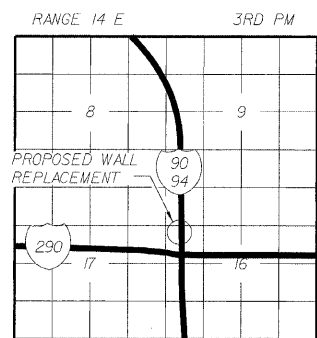
Paul Anderson
ENGINEER OF BRIDGES AND STRUCTURES

① 3-#5 v(E) BARS @ 2 EQ. SPA. = 1'-8" (E.F.)
SEE CORBEL @ SUB-PIER 'G' DETAIL, SHEET 04.



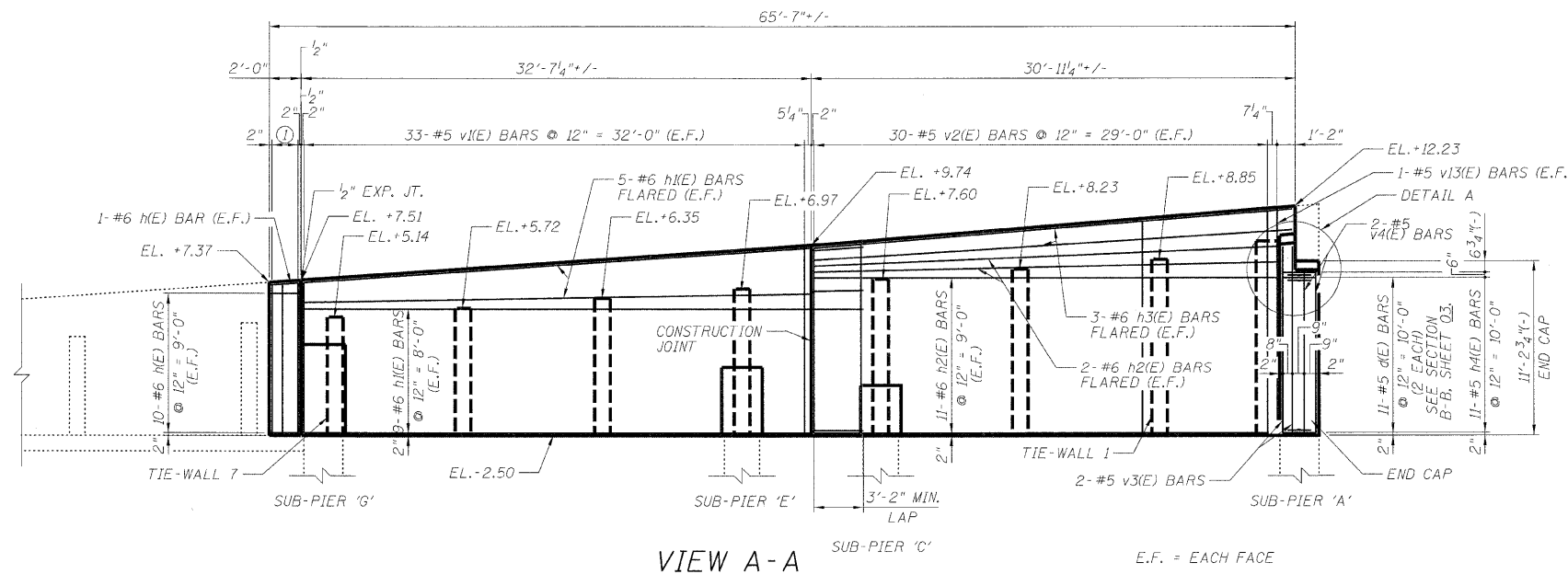
PARTIAL PLAN

PAVEMENT & CURB REMOVED FOR CLARITY
RAMP C TO BE REMOVED



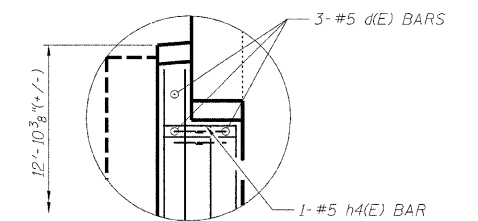
LOCATION SKETCH

DESIGNED	ASP
CHECKED	LNB
DRAWN	BEM
CHECKED	ASP



VIEW A-A

E.F. = EACH FACE



DETAIL A

RAMPS 'B' & 'C' GENERAL PLAN
I-90/94 KENNEDY EXPRESSWAY
(HUBBARDS CAVE TO I-290)
SECTION (202.6-2P, ETC, 1415 & 1517)R-7

COOK COUNTY
STRUCTURE NO. 016-W985

DLZ 85 W. Algonquin Rd. Ste. 220
Arlington Heights IL 60005