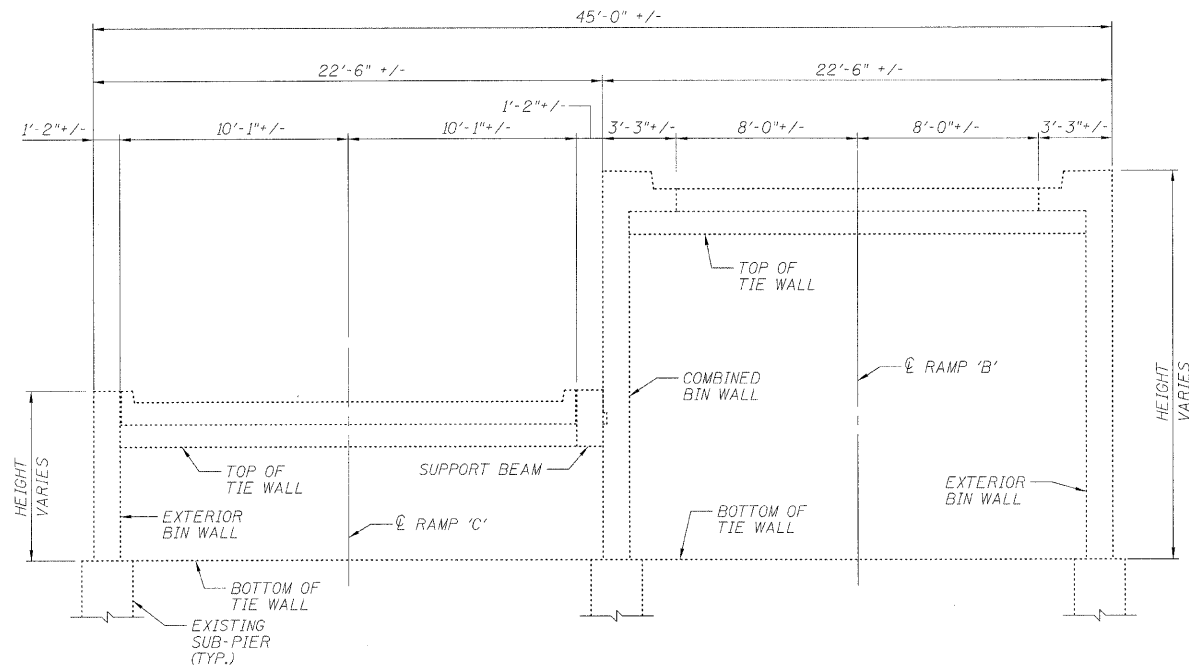


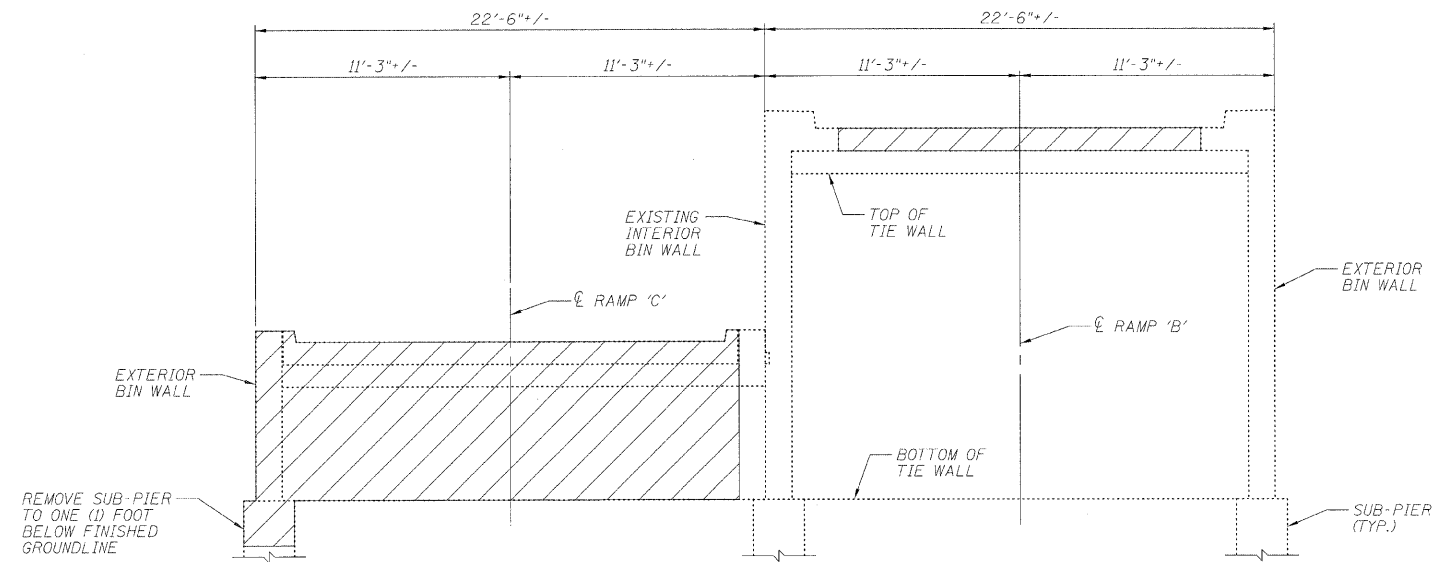
STATE OF ILLINOIS
DEPARTMENT OF TRANSPORTATION

ROUTE NO.	SECTION	COUNTY	TOTAL SHEETS	SHEET NO.	SHEET NO. 02 09 SHEETS
F.A.P. 90/94	*	COOK	246	184	
FED. ROAD DIST. NO. 7	ILLINOIS	FED. AID PROJECT-			

*SECT. (202.6-2P, ETC, 1415 & 1517)R-7
Contract # 62408



EXISTING TYPICAL SECTION
(LOOKING NORTH)



STAGE 1
(LOOKING NORTH)



PROPOSED STAGE PLANNING

STAGE 1

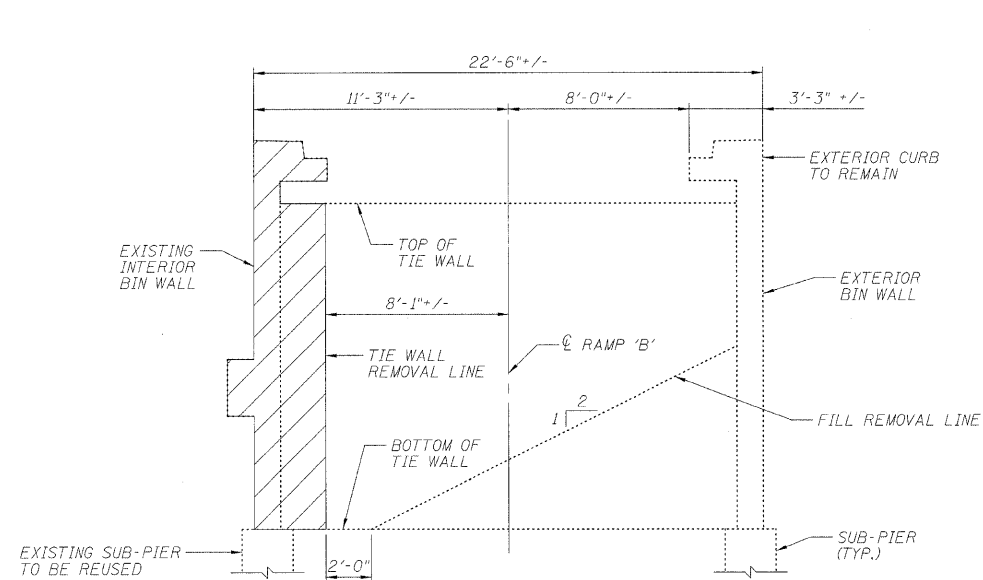
1. CLOSE RAMP 'B' TO TRAFFIC.
2. REMOVE, SALVAGE AND STORE RAILING FROM RAMP 'B' CENTER WALL.
3. REMOVE RAMP 'B' PAVEMENT.
4. REMOVE RAMP 'C' IN ACCORDANCE WITH THE PLANS AND SPECIFICATIONS. NO WORK SHALL BE PERFORMED FROM ON TOP OF RAMP 'B' UPON COMMENCEMENT OF RAMP 'C' REMOVAL FOR THE DURATION OF CENTER WALL REPLACEMENT.

STAGE 2

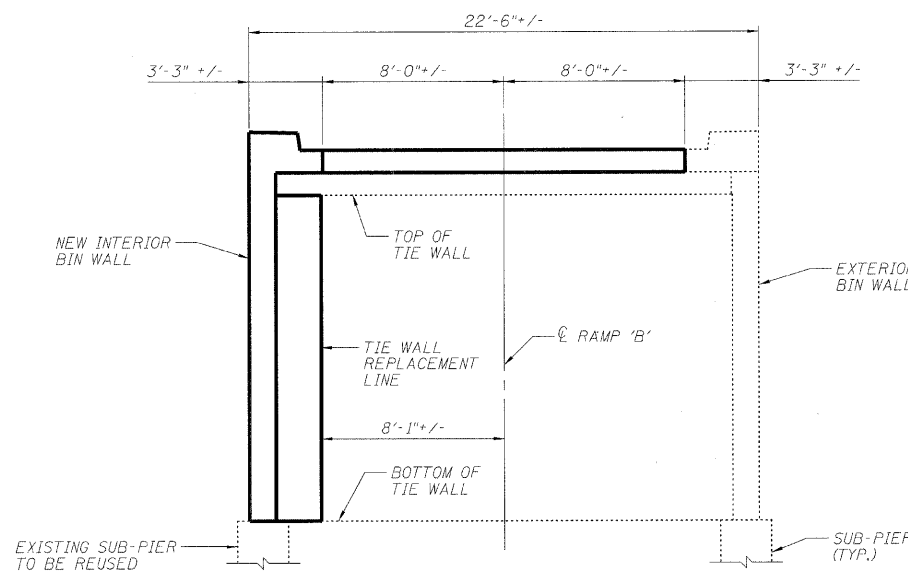
5. REMOVE INTERIOR BIN WALL, FILL MATERIAL, AND RAMP 'B' TIE WALLS. TIE WALLS TO BE REMOVED FROM EXISTING INTERIOR BIN WALL TO AN OFFSET OF 8'-1" LEFT OF RAMP 'B' CENTERLINE.

FINAL

6. CONSTRUCT PROPOSED INTERIOR BIN WALL, CORBELS AND TIE WALL PORTIONS AS SPECIFIED IN THE PLANS AND SPECIFICATIONS. INTERIOR BIN WALL TO BE CONSTRUCTED UP TO MANDATORY CONSTRUCTION JOINT PRIOR TO BACKFILLING OPERATIONS.
7. FILL BIN WITH POROUS GRANULAR EMBANKMENT IN ACCORDANCE WITH SECTION 207.00 OF THE STANDARD SPECIFICATIONS.
8. UPON COMPLETION OF BACKFILLING OPERATIONS, CONSTRUCT CURB PORTION OF INTERIOR BIN WALL THEN CONSTRUCT ROADWAY PAVEMENT.
9. REPLACE GUARDRAIL ON NEWLY CONSTRUCTED WALL.
10. RE-OPEN RAMP 'B' TO TRAFFIC.



STAGE 2
(LOOKING NORTH)



FINAL
(LOOKING NORTH)

DESIGNED	ASP
CHECKED	LNB
DRAWN	BEM
CHECKED	ASP

RAMPS 'B' & 'C' PROPOSED STAGE PLANNING

I-90/94 KENNEDY EXPRESSWAY

(HUBBARDS CAVE TO I-290)

SECTION (202.6-2P, ETC, 1415 & 1517)R-7

COOK COUNTY

STRUCTURE NO. 016-W985

DLZ 85 W. Algonquin Rd. Ste. 220
Arlington Heights IL 60005
DLZ Illinois, Inc.