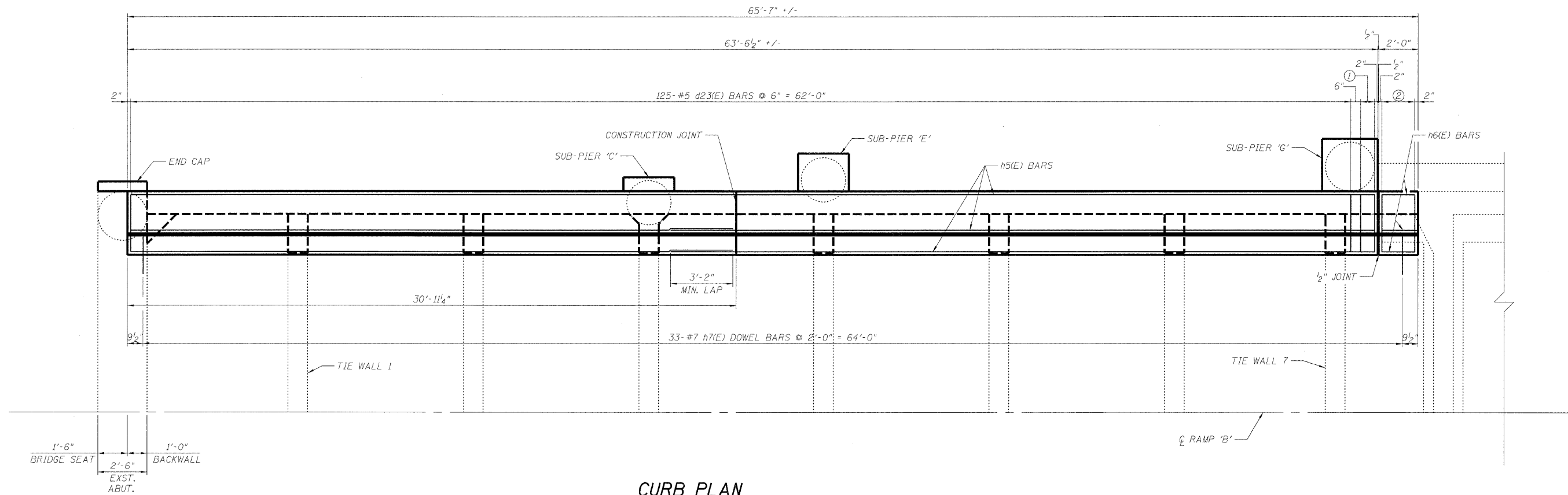


STATE OF ILLINOIS
DEPARTMENT OF TRANSPORTATION

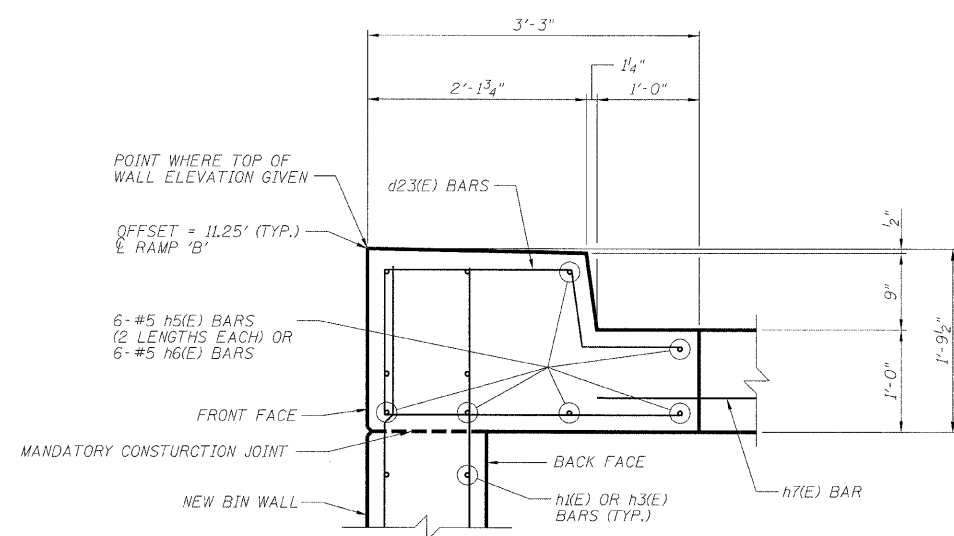
ROUTE NO.	SECTION	COUNTY	TOTAL SHEETS	SHEET NO.	SHEET NO. 07 09 SHEETS
F.A.P. 90/94	*	COOK	246	189	
FED. ROAD DIST. NO. 7	ILLINOIS	FED. AID PROJECT-			

*SECT. (202.6-2P, ETC, 1415 & 1517)R-7
Contract # 62408



CURB PLAN

- ① 3- #5 d23(E) BARS
EQ. SPA. = 8 1/2"
- ② 5- #5 d23(E) BARS
EQ. SPA. = 1'-8"



TOP OF WALL DETAIL

DESIGNED	ASP
CHECKED	WSP
DRAWN	BEM
CHECKED	ASP

RAMPS 'B' & 'C' CURB PLAN & DETAILS
I-90/94 KENNEDY EXPRESSWAY
(HUBBARDS CAVE TO I-290)
SECTION (202.6-2P, ETC, 1415 & 1517)R-7
COOK COUNTY
STRUCTURE NO. 016-W985