

STATE OF ILLINOIS  
DEPARTMENT OF TRANSPORTATION

ROUTE NO.	SECTION	COUNTY	TOTAL SHEETS	SHEET NO.	SHEET NO. 01 07 SHEETS
F.A.P. 90/94	*	COOK	246	192	
FED. ROAD DIST. NO. 1		ILLINOIS	FED. AID PROJECT		

\*SECT. (202.6-2P, ETC, 1415 & 1517)R-7  
Contract # 62408

GENERAL NOTES

1. REINFORCEMENT BARS SHALL CONFORM TO THE REQUIREMENTS OF ASTM A 706 GR 60 (IL MODIFIED). SEE SPECIAL PROVISIONS
2. REINFORCEMENT BARS DESIGNATED (E) SHALL BE EPOXY COATED.
3. EXPOSED EDGES SHALL HAVE A 3/4" CHAMFER.
4. PLAN DIMENSIONS AND DETAILS RELATIVE TO EXISTING PLANS ARE SUBJECT TO ROUTINE VARIATIONS. THE CONTRACTOR SHALL FIELD VERIFY EXISTING DIMENSIONS AND DETAILS AFFECTING NEW CONSTRUCTION AND MAKE NECESSARY APPROVED ADJUSTMENTS PRIOR TO CONSTRUCTION OR ORDERING OF MATERIALS. SUCH VARIATIONS SHALL NOT BE CAUSE FOR ADDITIONAL COMPENSATION FOR A CHANGE IN SCOPE OF WORK, HOWEVER, THE CONTRACTOR WILL BE PAID FOR THE QUANTITY ACTUALLY FURNISHED BASED UPON THE UNIT PRICE BID FOR THE WORK.
5. EXISTING REINFORCEMENT, THAT IS TO BE REUSED IN THE PROPOSED, SHALL BE CLEANED AND STRAIGHTENED.
6. EMBEDDED BARS SHALL BE EPOXY GROUTED, TO THE DEPTH SPECIFIED, IN ACCORDANCE WITH SECTION 584 OF THE STANDARD SPECIFICATIONS.

DESIGN SPECIFICATIONS

AASHTO 2002 SPECIFICATIONS W/ CURRENT INTERIMS

DESIGN STRESSES

$f'_c = 3,500$  psi (CONCRETE)  
 $f_y = 60,000$  psi (REINFORCEMENT)

APPROVED  
FOR STRUCTURAL ADEQUACY ONLY

Ralph E. Anderson  
ENGINEER OF BRIDGES AND STRUCTURES

BILL OF MATERIALS


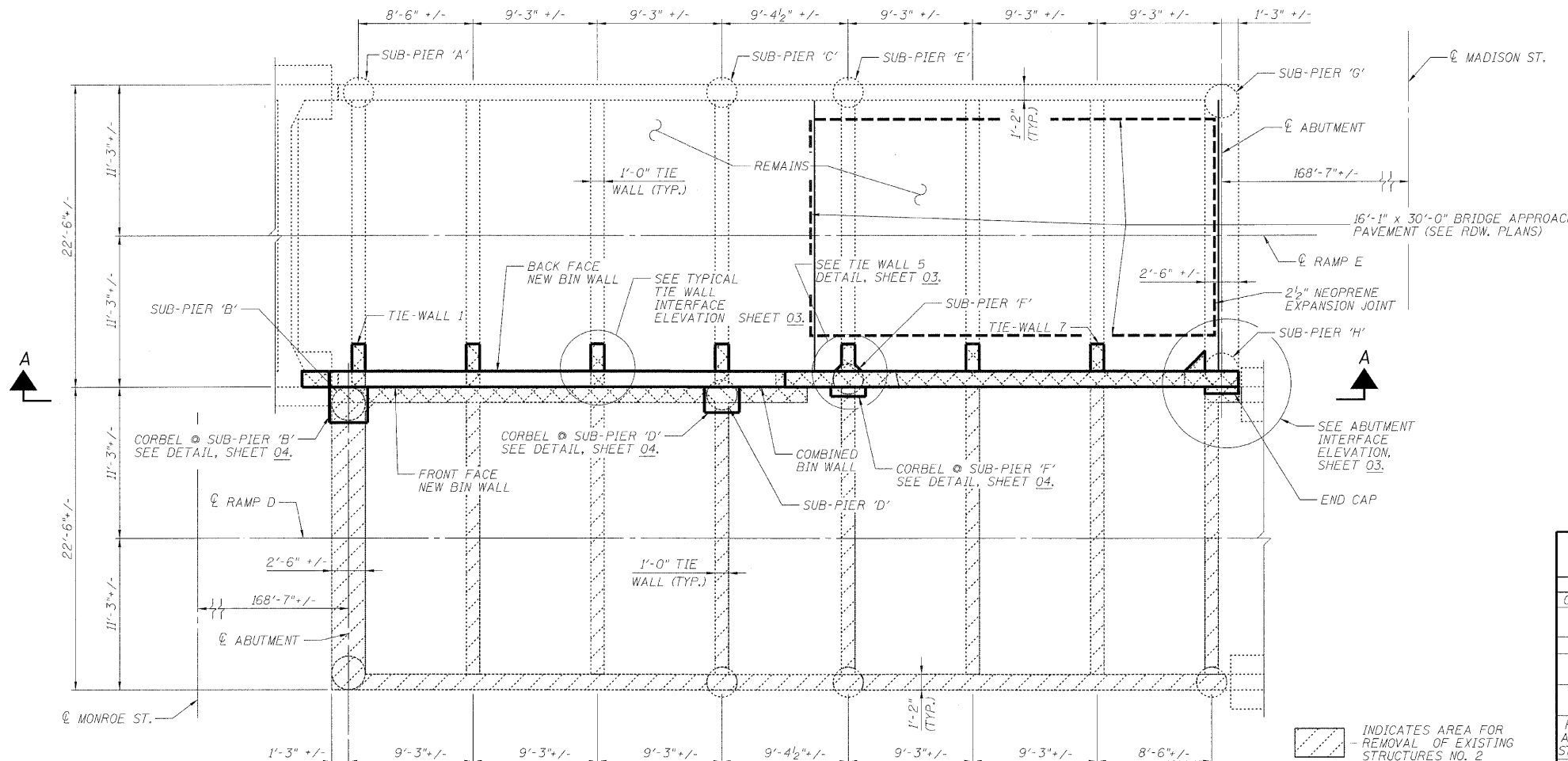
ITEM	UNIT	QUANTITY
CONCRETE STRUCTURES	CU YD	50.2
REMOVAL OF EXISTING STRUCTURES NO. 2	EACH	1
CONCRETE REMOVAL	CU YD	61
REINFORCEMENT BARS, EPOXY COATED	POUND	7,780
POROUS GRANULAR EMBANKMENT	TON	652
REMOVE, SALVAGE, STORE AND INSTALL DECORATIVE STEEL GUARDRAIL, RAMP E	LS	1
FABRICATION AND INSTALLATION OF EMBEDDED PLATES, RAMP E	LS	1
2 1/2" NEOPRENE EXPANSION JOINT	FOOT	24

DLZ ILLINOIS, LLC.  
ARLINGTON HEIGHTS, ILLINOIS

Signed: *Ralph E. Anderson*

Date: 02-25-2009

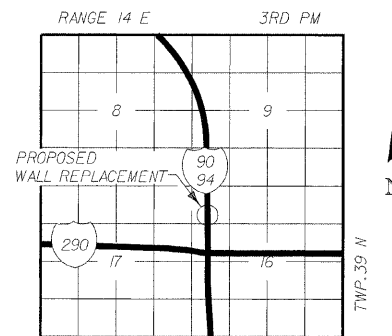
Expiration Date: 11/30/10

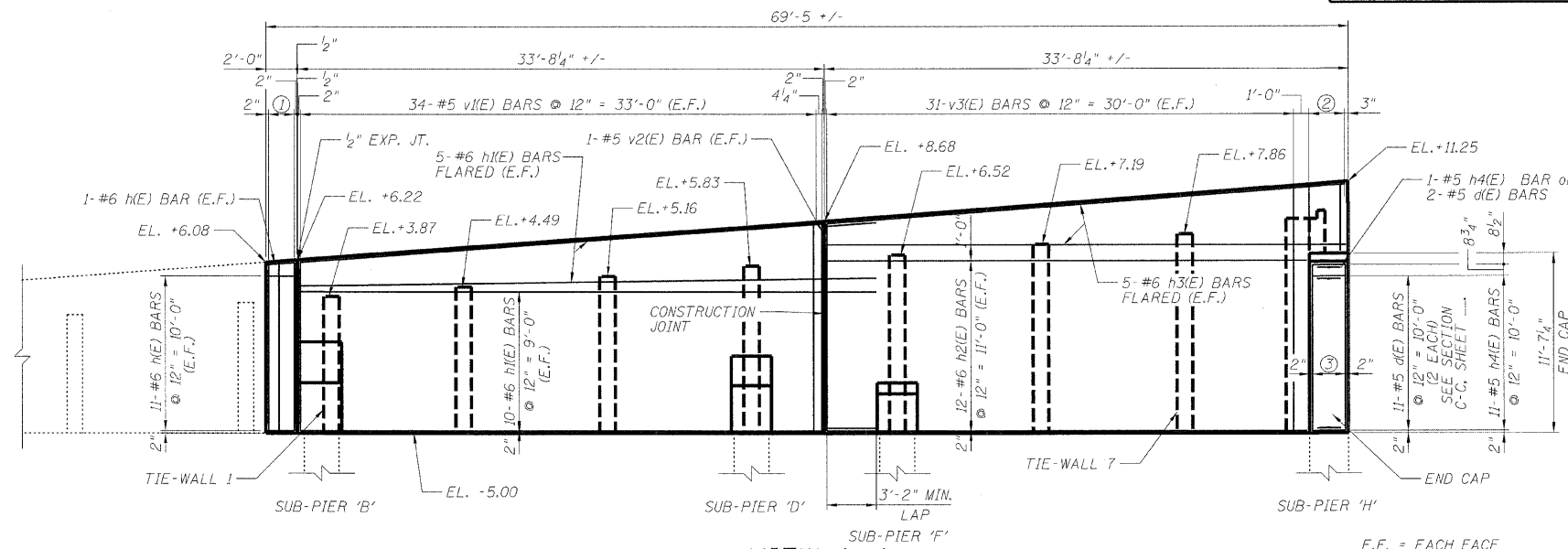
PARTIAL PLAN

PAVEMENT REMOVED FOR CLARITY  
RAMP D TO BE REMOVED

- INDICATES AREA FOR REMOVAL OF EXISTING STRUCTURES NO. 2
- INDICATES AREA FOR REMOVAL OF EXISTING STRUCTURES NO. 2



LOCATION SKETCH



VIEW A-A

E.F. = EACH FACE

- 1-#5 v(E) BARS @ 2 EQ. SPA. = 1'-8" (E.F.)  
SEE CORBEL @ SUB-PIER 'B' DETAIL, SHEET 04.
- 4-#5 v4(E) BARS @ EQ. SPA. = 2'-3 1/4" (E.F.)  
SEE SECTION B-B SHEET 03.
- 4-#5 v5(E) BARS @ EQ. SPACES  
SEE SECTION C-C, SHEET 03.

RAMPS 'D' & 'E' GENERAL PLAN  
I-90/94 KENNEDY EXPRESSWAY  
(HUBBARDS CAVE TO I-290)  
SECTION (202.6-2P, ETC, 1415 & 1517)R-7

COOK COUNTY

STRUCTURE NO. 016-W986

DLZ 85 W. Algonquin Rd. Ste. 220  
Arlington Heights IL 60005

DESIGNED	ASP
CHECKED	LNB
DRAWN	BEM
CHECKED	ASP