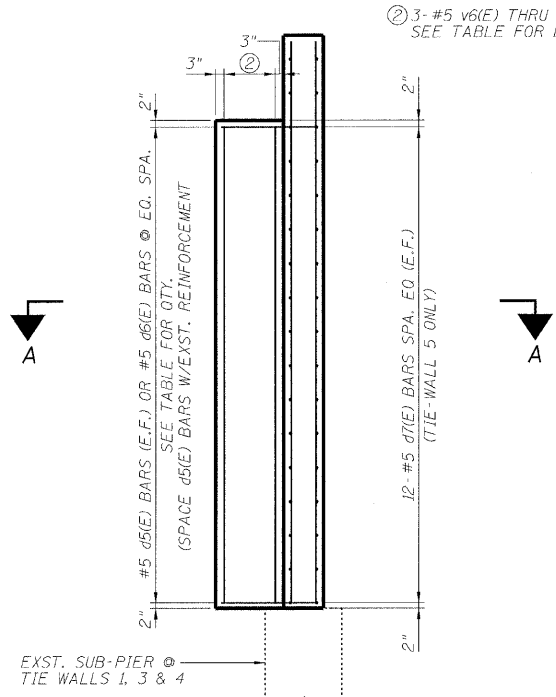


STATE OF ILLINOIS
DEPARTMENT OF TRANSPORTATION

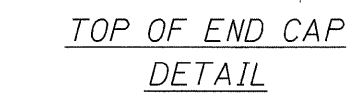
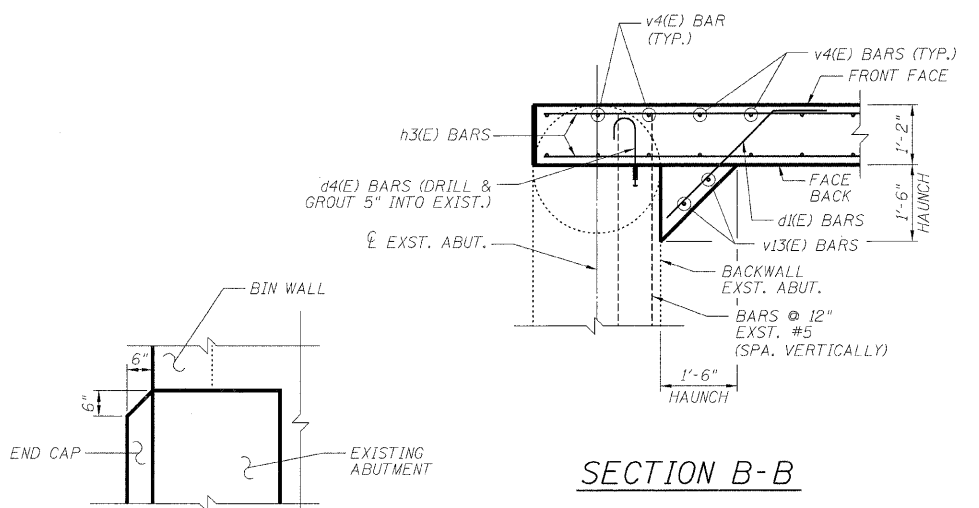
ROUTE NO.	SECTION	COUNTY	TOTAL SHEETS	SHEET NO.	SHEET NO. 03 07 SHEETS
F.A.P. 90/94	*	COOK	246	194	
FED. ROAD DIST. NO. 1		ILLINOIS	FED. AID PROJECT		

*SECT. (202.6-2P, ETC. 1415 & 1517)R-7
Contract # 62408

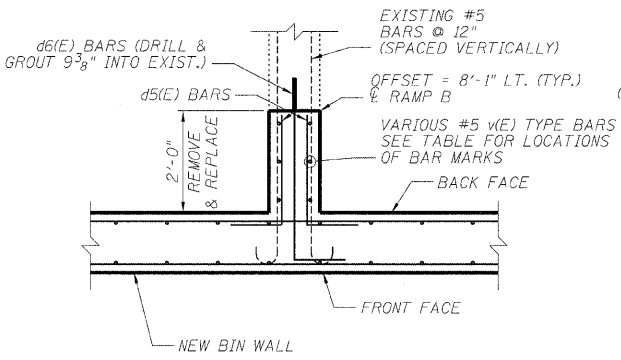


TIE WALL INTERFACE BARS

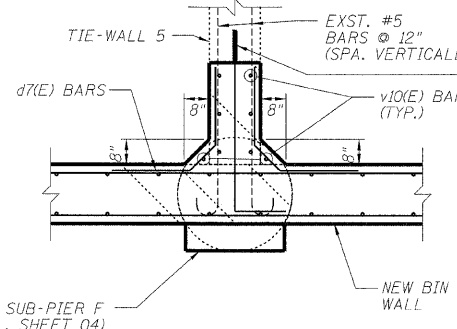
TIE WALL	d5(E) BARS (E.F.)	d6(E) BARS VERT. BARS	VERT. BARS
1	9	13	v6(E)
2	10	13	v7(E)
3	10	13	v8(E)
4	11	13	v9(E)
5	0	13	v10(E)
6	12	13	v11(E)
7	13	13	v12(E)



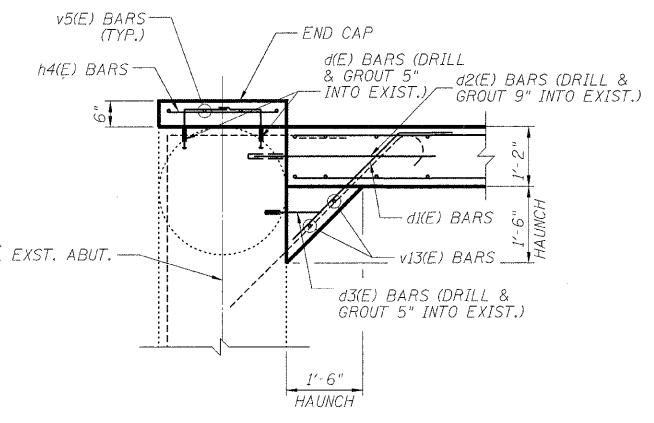
TYPICAL TIE-WALL
INTERFACE ELEVATION



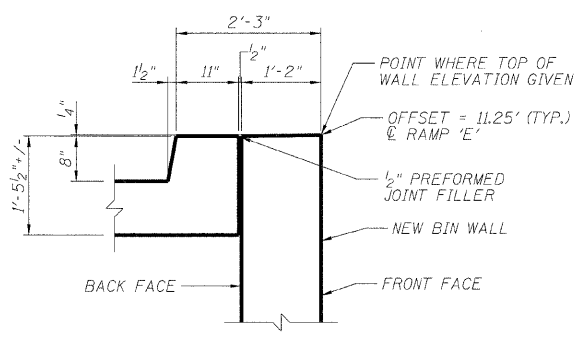
SECTION A-A



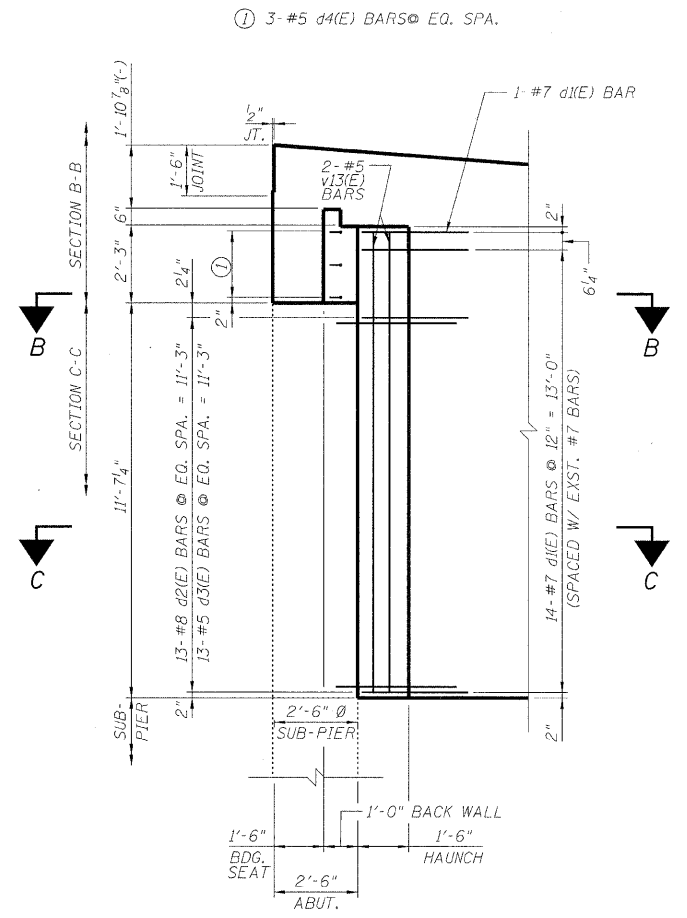
TIE-WALL 5 DETAIL



SECTION C-C



TOP OF WALL DETAIL



ABUTMENT INTERFACE
ELEVATION
(LOOKING @ BACKFACE)

RAMPS 'D' & 'E' DETAILS
I-90/94 KENNEDY EXPRESSWAY
(HUBBARDS CAVE TO I-290)
SECTION (202.6-2P, ETC. 1415 & 1517)R-7
COOK COUNTY
STRUCTURE NO. 016-W986

DESIGNED	ASP
CHECKED	LNB
DRAWN	BEM
CHECKED	ASP

NOTE:
BARS d1(E), d2(E) - d4(E) & d6(E) SHALL
BE EMBEDDED AND GROUTED USING
HIGH STRENGTH EPOXY GROUT.