

STATE OF ILLINOIS
DEPARTMENT OF TRANSPORTATION

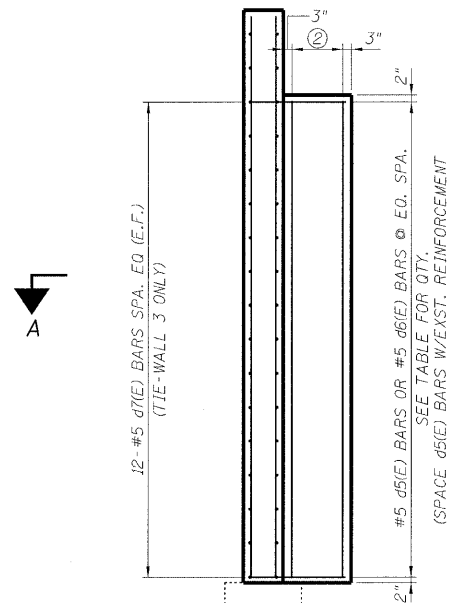
ROUTE NO.	SECTION	COUNTY	TOTAL SHEETS	SHEET NO.	SHEET NO.
F.A.P. 90/94	*	COOK	206	201	07 SHEETS
FED. ROAD DIST. NO. 1		ILLINOIS	FED. AID PROJECT		

*SECT. (202.6-2P, ETC, 1415 & 1517)R-7
Contract # 62408

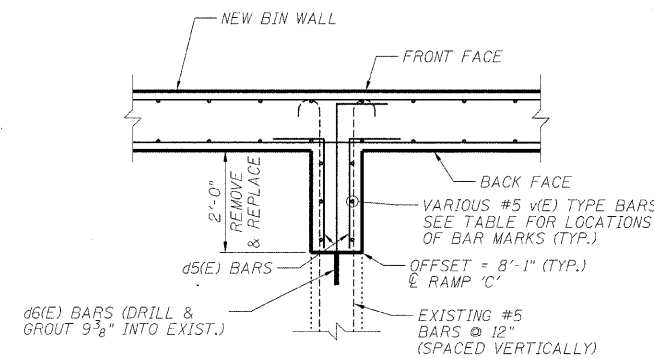
② 3-#5 v9(E) THRU v18(E) BARS @ EQ. SPA. (E.F.)
SEE TABLE FOR LOCATION OF EACH BAR MARK

TIE WALL INTERFACE BARS

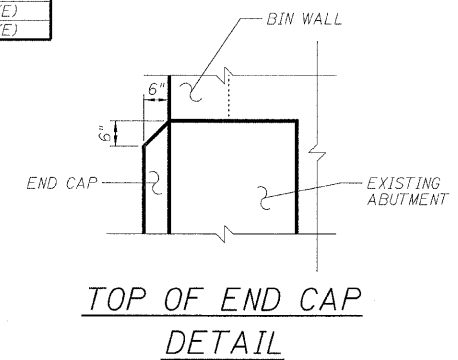
TIE WALL	d5(E) BARS (E.F.)	d6(E) BARS	VERT. BARS
1	13	13	v9(E)
2	13	13	v10(E)
3	0	13	v11(E)
4	12	13	v12(E)
5	12	13	v13(E)
6	11	13	v14(E)
7	11	13	v15(E)
8	10	13	v16(E)
9	10	13	v17(E)
10	9	13	v18(E)



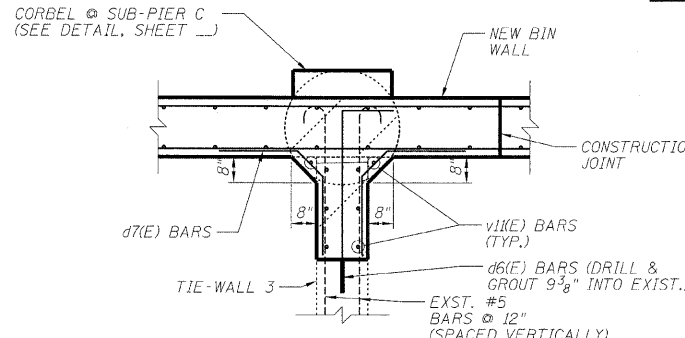
TYPICAL TIE-WALL
INTERFACE ELEVATION



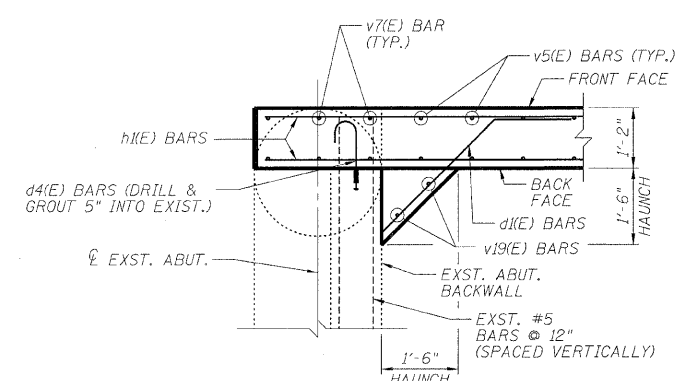
SECTION A-A



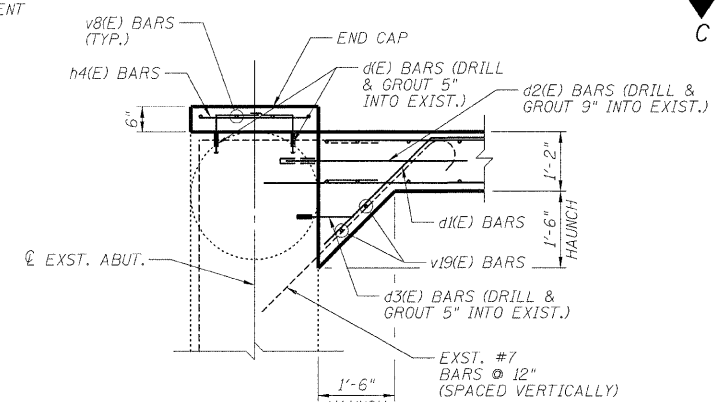
TOP OF END CAP
DETAIL



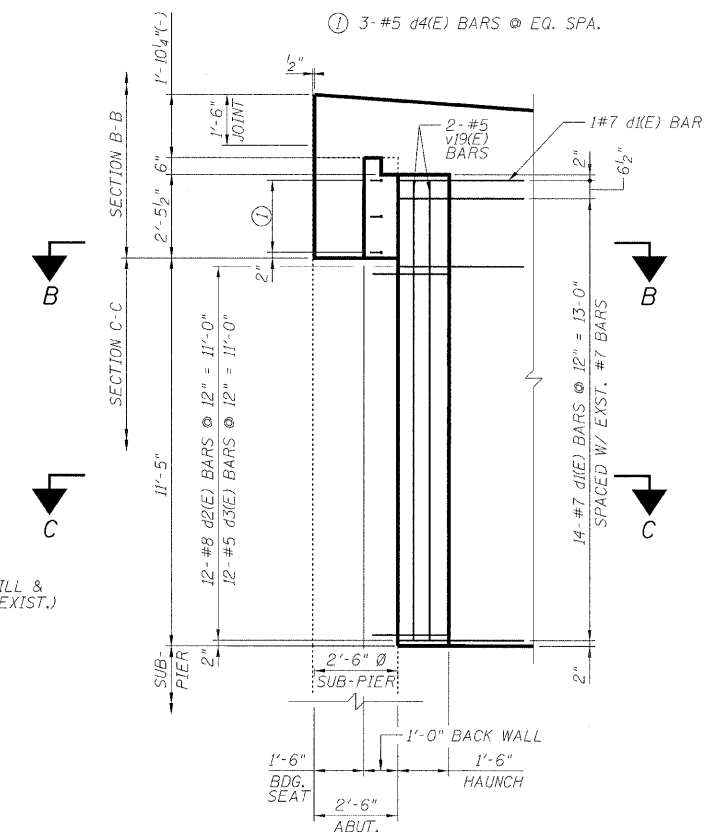
TIE-WALL 3 DETAIL



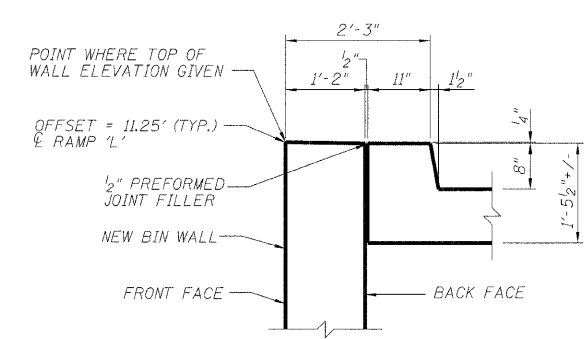
SECTION B-B



SECTION C-C



ABUTMENT INTERFACE ELEVATION
(LOOKING @ BACK FACE OF NEW BIN WALL)



TOP OF WALL DETAIL

NOTE:
BARS d1(E), d2(E) - d4(E) & d6(E) SHALL BE
EMBEDDED AND GROUTED INTO EXISTING
CONCRETE USING HIGH STRENGTH EPOXY GROUT.

DESIGNED	ASP
CHECKED	LNB
DRAWN	BEM
CHECKED	ASP

RAMPS 'L' & 'M' DETAILS
I-90/94 KENNEDY EXPRESSWAY
(HUBBARDS CAVE TO I-290)
SECTION (202.6-2P, ETC, 1415 & 1517)R-7
COOK COUNTY
STRUCTURE NO. 016-W987