

STATE OF ILLINOIS  
DEPARTMENT OF TRANSPORTATION

ROUTE NO.	SECTION	COUNTY	TOTAL SHEETS	SHEET NO.	SHEET NO. 01
F.A.P. 90/94	*	COOK	246	206	08 SHEETS
FED. ROAD DIST. NO. 1	ILLINOIS	FED. AID PROJECT			

\*SECT. (202.6-2P, ETC. 1415 & 1517)R-7  
Contract # 62408

GENERAL NOTES

1. REINFORCEMENT BARS SHALL CONFORM TO THE REQUIREMENTS OF ASTM A 706 GR 60 (IL MODIFIED). SEE SPECIAL PROVISIONS
2. REINFORCEMENT BARS DESIGNATED (E) SHALL BE EPOXY COATED.
3. EXPOSED EDGES SHALL HAVE A 3/4" CHAMFER.
4. PLAN DIMENSIONS AND DETAILS RELATIVE TO EXISTING PLANS ARE SUBJECT TO ROUTINE VARIATIONS. THE CONTRACTOR SHALL FIELD VERIFY EXISTING DIMENSIONS AND DETAILS AFFECTING NEW CONSTRUCTION AND MAKE NECESSARY APPROVED ADJUSTMENTS PRIOR TO CONSTRUCTION OR ORDERING OF MATERIALS. SUCH VARIATIONS SHALL NOT BE CAUSE FOR ADDITIONAL COMPENSATION FOR A CHANGE IN SCOPE OF WORK, HOWEVER, THE CONTRACTOR WILL BE PAID FOR THE QUANTITY ACTUALLY FURNISHED BASED UPON THE UNIT PRICE BID FOR THE WORK.
5. EXISTING REINFORCEMENT THAT IS TO BE REUSED IN THE PROPOSED, SHALL BE CLEANED AND STRAIGHTENED.
6. EMBEDDED BARS SHALL BE EPOXY GROUTED TO THE DEPTH SPECIFIED, IN ACCORDANCE WITH SECTION 548 OF THE STANDARD SPECIFICATIONS.

DESIGN SPECIFICATIONS

AASHTO 2002 SPECIFICATIONS W/ CURRENT INTERIMS

DESIGN STRESSES

f'c = 3,500 psi (CONCRETE)  
fy = 60,000 psi (REINFORCEMENT)

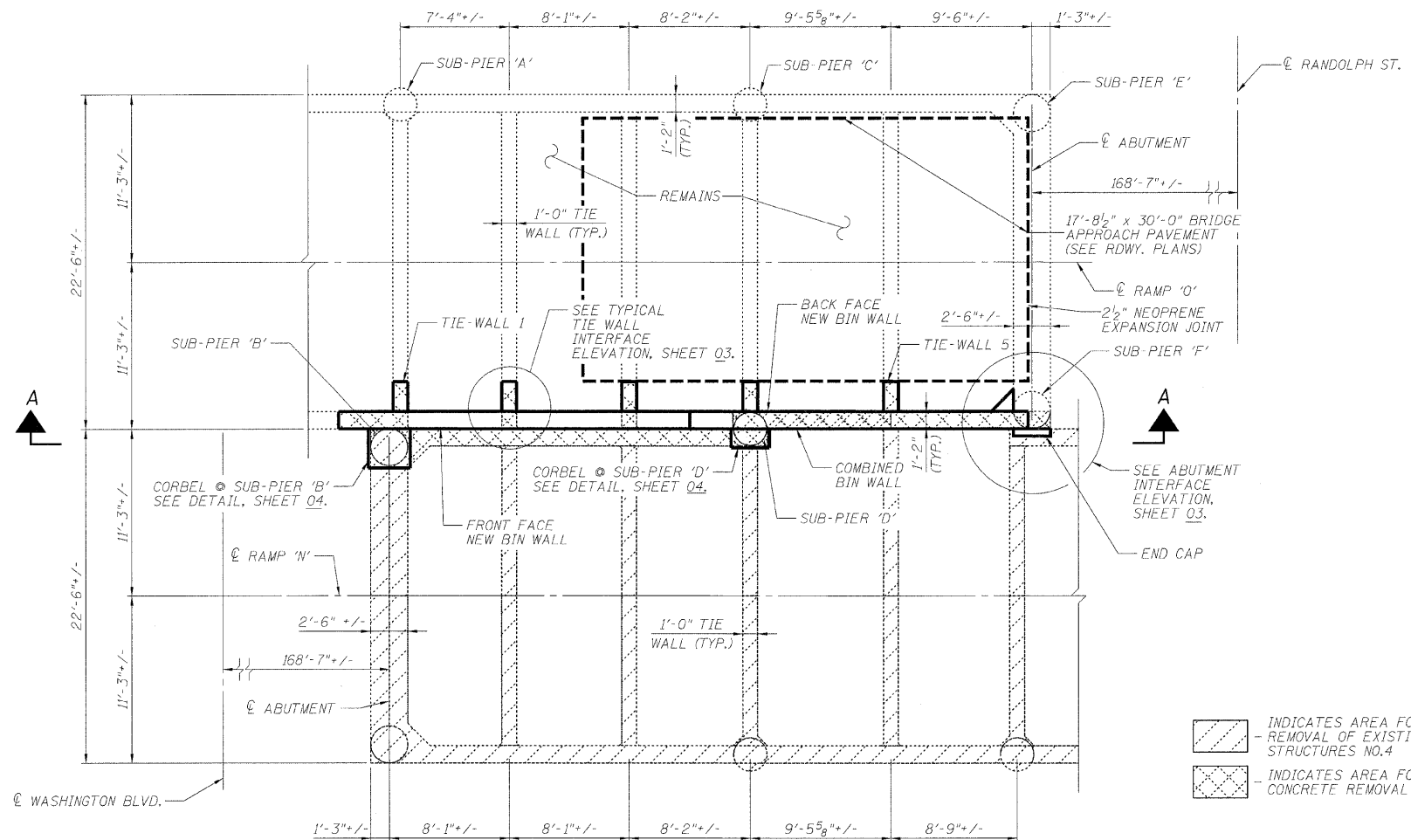
APPROVED  
FOR STRUCTURAL ADEQUACY ONLY

*Ralph E. Anderson*  
ENGINEER OF BRIDGES AND STRUCTURES

ITEM	UNIT	QUANTITY
CONCRETE STRUCTURES	CU YD	37.8
REMOVAL OF EXISTING STRUCTURES NO. 4	EACH	1
CONCRETE REMOVAL	CU YD	45
REINFORCEMENT BARS, EPOXY COATED	POUND	6,350
POROUS GRANULAR EMBANKMENT	TON	490
REMOVE, SALVAGE, STORE AND INSTALL DECORATIVE STEEL GUARDRAIL, RAMP 'O'	LS	1
FABRICATION AND INSTALLATION OF EMBEDDED PLATES, RAMP 'O'	LS	1
2 1/2" NEOPRENE EXPANSION JOINT	FOOT	24

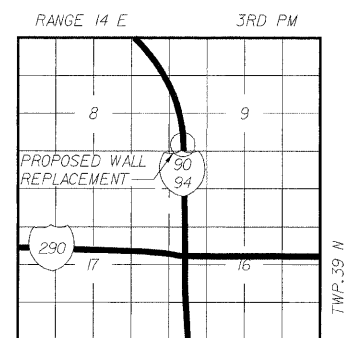
DLZ ILLINOIS, LLC.  
ARLINGTON HEIGHTS, ILLINOIS

Signed: *R. Anderson*  
Date: 02-25-2009  
Expiration Date: 11/30/10

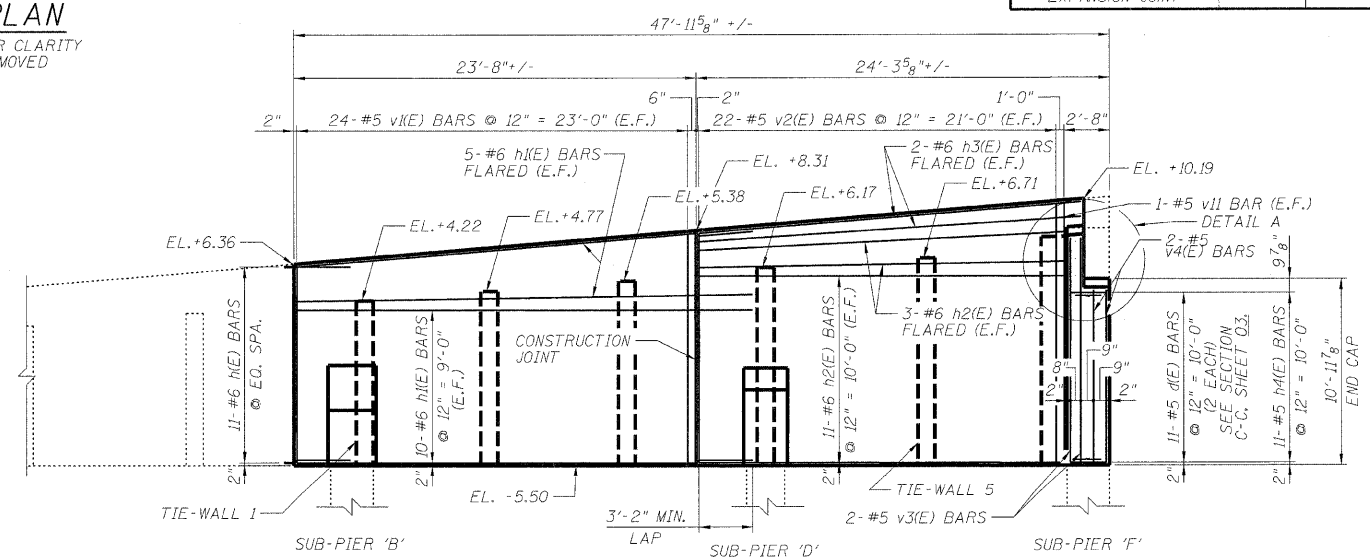


INDICATES AREA FOR REMOVAL OF EXISTING STRUCTURES NO. 4  
INDICATES AREA FOR CONCRETE REMOVAL

PARTIAL PLAN  
PAVEMENT REMOVED FOR CLARITY  
RAMP 'N' TO BE REMOVED

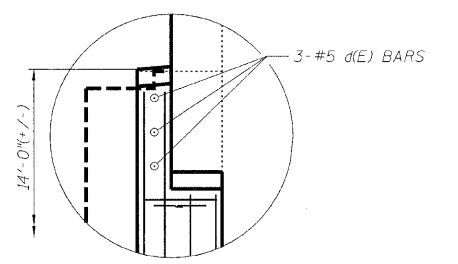


LOCATION SKETCH



VIEW A-A

E.F. = EACH FACE



DETAIL A

RAMPS 'N' & 'O' GENERAL PLAN  
I-90/94 KENNEDY EXPRESSWAY  
(HUBBARDS CAVE TO I-290)  
SECTION (202.6-2P, ETC. 1415 & 1517)R-7  
COOK COUNTY  
STRUCTURE NO. 016-W988

DESIGNED	ASP
CHECKED	LNB
DRAWN	BEM
CHECKED	ASP