

STATE OF ILLINOIS
DEPARTMENT OF TRANSPORTATION

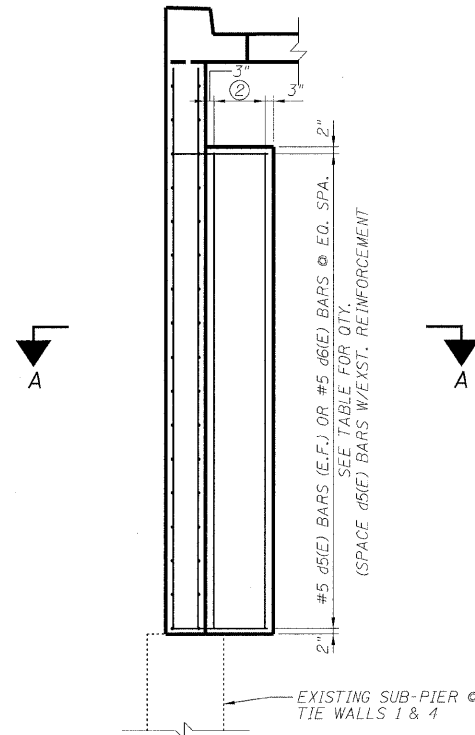
ROUTE NO.	SECTION	COUNTY	TOTAL SHEETS	SHEET NO.	SHEET NO. 03
F.A.P. 90/94	*	COOK	246	208	08 SHEETS
FED. ROAD DIST. NO. 1	ILLINOIS	FED. AID PROJECT-			

*SECT. (202.6-2P, ETC, 1415 & 1517)R-7
Contract # 62408

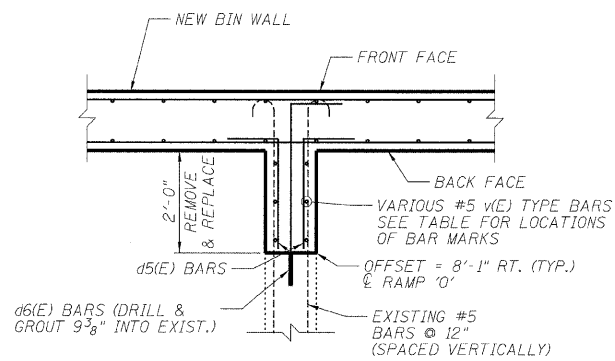
② 3-#5 v5(E) THRU v9(E) BARS @ EQ. SPA. (E.F.)
SEE TABLE FOR LOCATION OF EACH BAR MARK

TIE WALL INTERFACE BARS

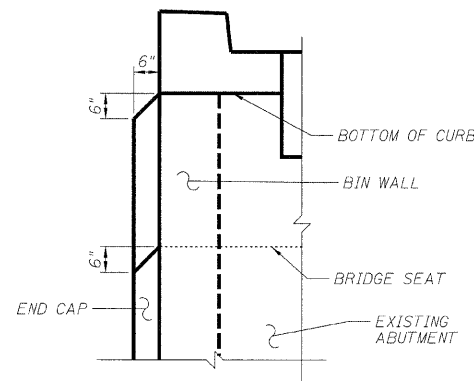
TIE WALL	d5(E) BARS (E.F.)	d6(E) BARS VERT. BARS	v5(E)
1	11	11	v5(E)
2	11	11	v6(E)
3	12	12	v7(E)
4	13	13	v8(E)
5	13	13	v9(E)



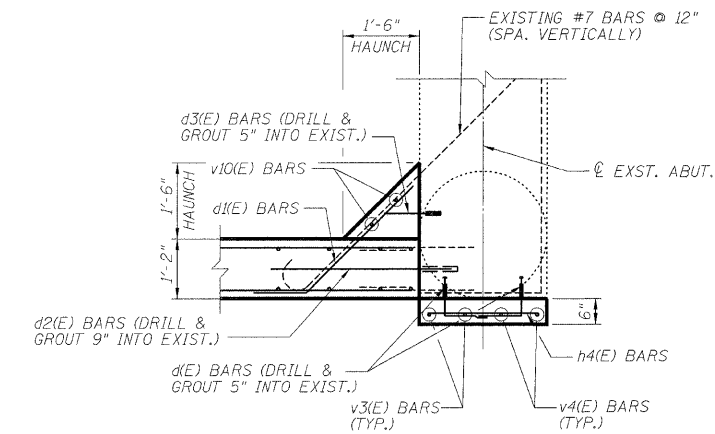
TYPICAL TIE-WALL
INTERFACE ELEVATION



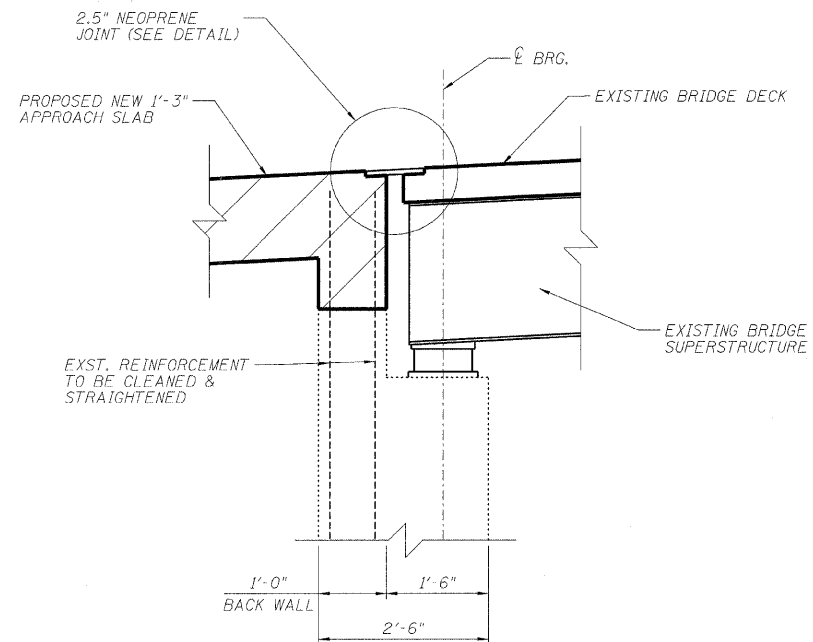
SECTION A-A



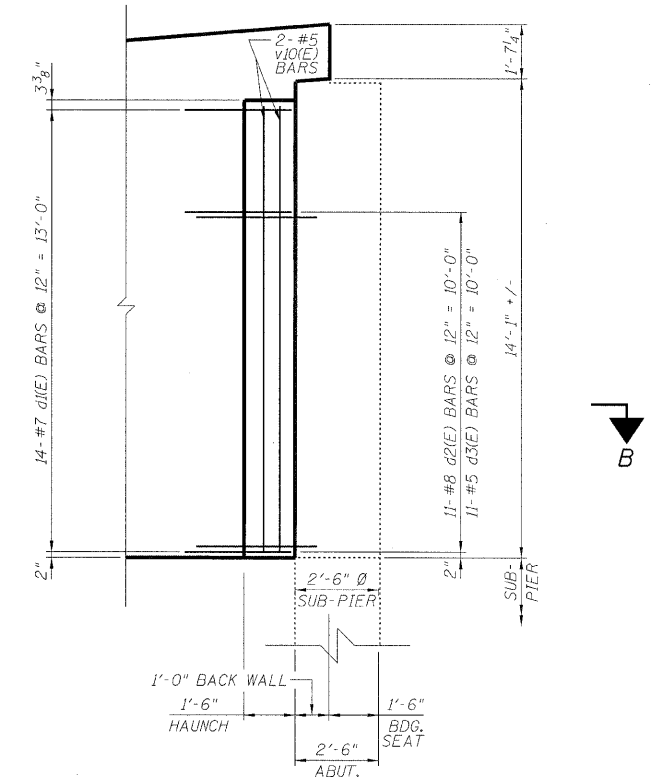
TOP OF END CAP
DETAIL



SECTION B-B

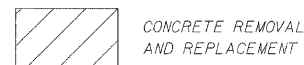


SECTION THRU ABUTMENT
@ APPROACH SLAB



ABUTMENT INTERFACE
ELEVATION
(LOOKING @ BACKFACE)

NOTE:
BARS d(E), d2(E)-d4(E) & d6(E)
SHALL BE EMBEDDED AND GROUTED
INTO EXISTING CONCRETE USING
HIGH STRENGTH EPOXY GROUT.



DESIGNED	ASP
CHECKED	LNB
DRAWN	BEM
CHECKED	ASP

RAMPS 'N' & 'O' DETAILS
I-90/94 KENNEDY EXPRESSWAY
(HUBBARD'S CAVE TO I-290)
SECTION (202.6-2P, ETC, 1415 & 1517)R-7
COOK COUNTY
STRUCTURE NO. 016-W988