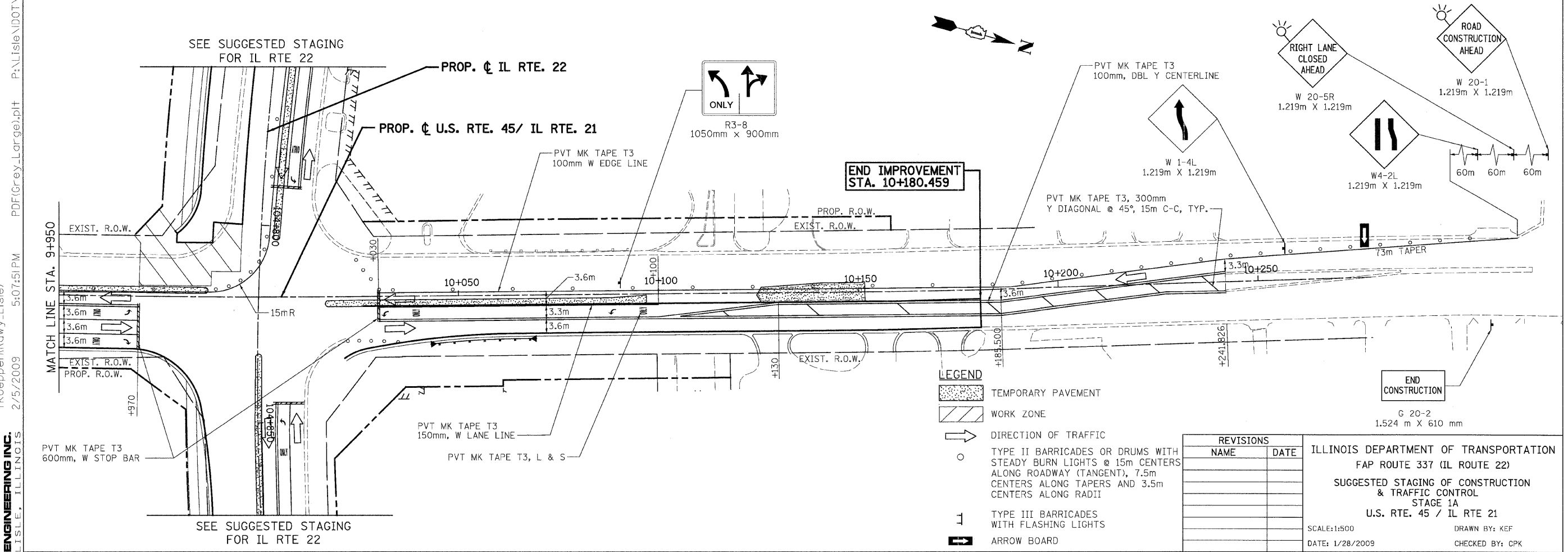
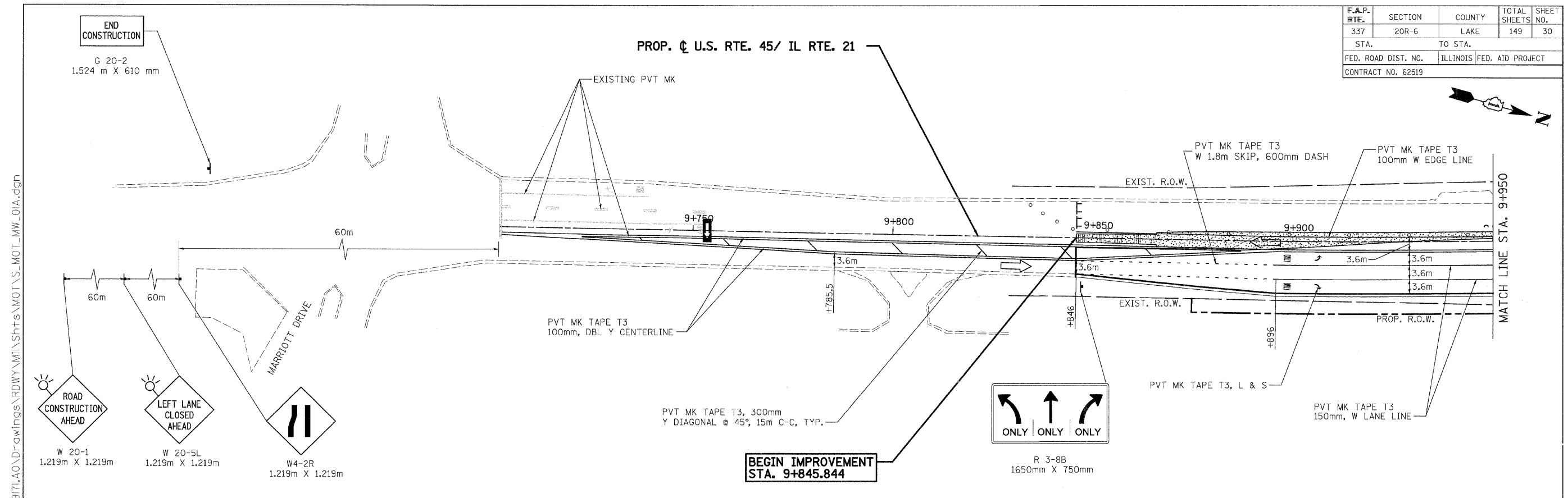


F.A.P. RTE.	SECTION	COUNTY	TOTAL SHEETS	SHEET NO.
337	20R-6	LAKE	149	30
STA.	TO STA.			
FED. ROAD DIST. NO.		ILLINOIS FED. AID PROJECT		
CONTRACT NO. 62519				



LEGEND

- TEMPORARY PAVEMENT
- WORK ZONE
- DIRECTION OF TRAFFIC
- TYPE II BARRICADES OR DRUMS WITH STEADY BURN LIGHTS @ 15m CENTERS ALONG ROADWAY (TANGENT), 7.5m CENTERS ALONG TAPERS AND 3.5m CENTERS ALONG RADII
- TYPE III BARRICADES WITH FLASHING LIGHTS
- ARROW BOARD

REVISIONS	
NAME	DATE

ILLINOIS DEPARTMENT OF TRANSPORTATION
 FAP ROUTE 337 (IL ROUTE 22)
 SUGGESTED STAGING OF CONSTRUCTION & TRAFFIC CONTROL
 STAGE 1A
 U.S. RTE. 45 / IL RTE 21

SCALE: 1:500
 DATE: 1/28/2009
 DRAWN BY: KEF
 CHECKED BY: CPK

P:\Lisle\IDOT\9171\AO\Drawings\RDWY\MOT\Shts\MOT\S_MOT_MW_OIA.dgn
 PDF(Grey_Large).plt
 P:\Lisle\IDOT\9171\AO\Drawings\RDWY\MOT\Shts\MOT\S_MOT_MW_OIA.dgn
 5:07:51PM
 2/5/2009
 tkoepfer(Rdwy_Lisle)
PATRICK ENGINEERING INC.
 LISLE, ILLINOIS