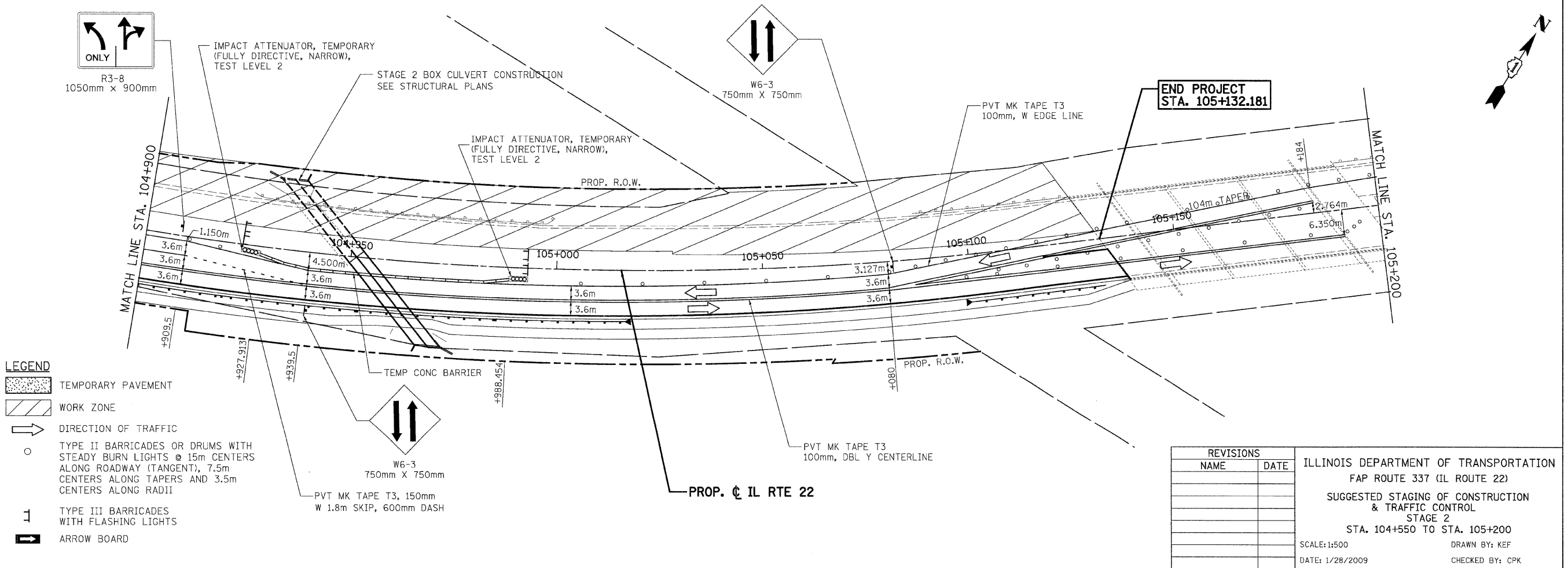
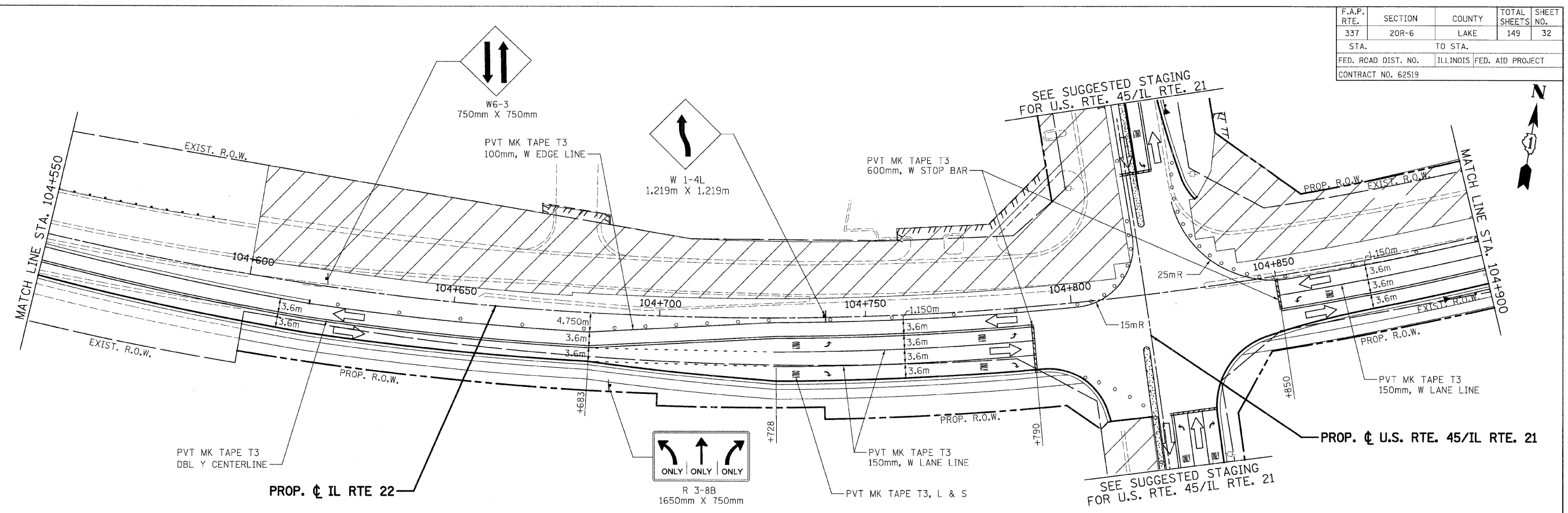


F.A.P. RTE.	SECTION	COUNTY	TOTAL SHEETS	SHEET NO.
337	20R-6	LAKE	149	32
STA.	TO STA.			
FED. ROAD DIST. NO.		ILLINOIS FED. AID PROJECT		
CONTRACT NO. 62519				



- LEGEND**
- TEMPORARY PAVEMENT
 - WORK ZONE
 - DIRECTION OF TRAFFIC
 - TYPE II BARRICADES OR DRUMS WITH STEADY BURN LIGHTS @ 15m CENTERS ALONG ROADWAY (TANGENT), 7.5m CENTERS ALONG TAPERS AND 3.5m CENTERS ALONG RADII
 - TYPE III BARRICADES WITH FLASHING LIGHTS
 - ARROW BOARD

REVISIONS	
NAME	DATE

ILLINOIS DEPARTMENT OF TRANSPORTATION
 FAP ROUTE 337 (IL ROUTE 22)
 SUGGESTED STAGING OF CONSTRUCTION & TRAFFIC CONTROL
 STAGE 2
 STA. 104+550 TO STA. 105+200
 SCALE: 1:500
 DATE: 1/28/2009
 DRAWN BY: KEF
 CHECKED BY: CPK

P:\Lislie\DOT\9171\AO\Drawings\RDWY\MIT\Shts\MOT\S_MOT_02-01.dgn
 P:\Grey_Large.plt
 5:08:09 PM
 2/5/2009
 kjoepfen(Rdwy-Lislie)
PATRICK ENGINEERING INC.
 LISIE, ILLINOIS