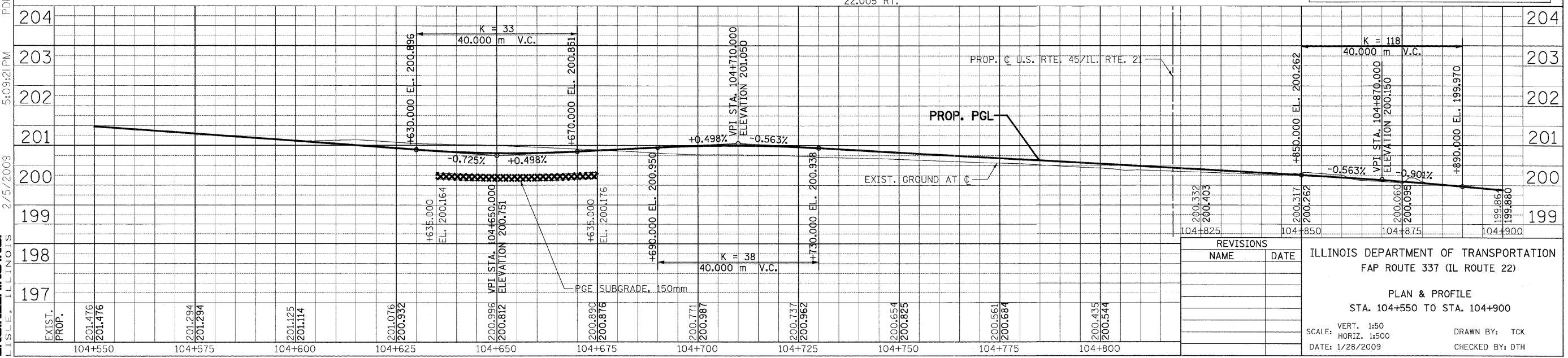
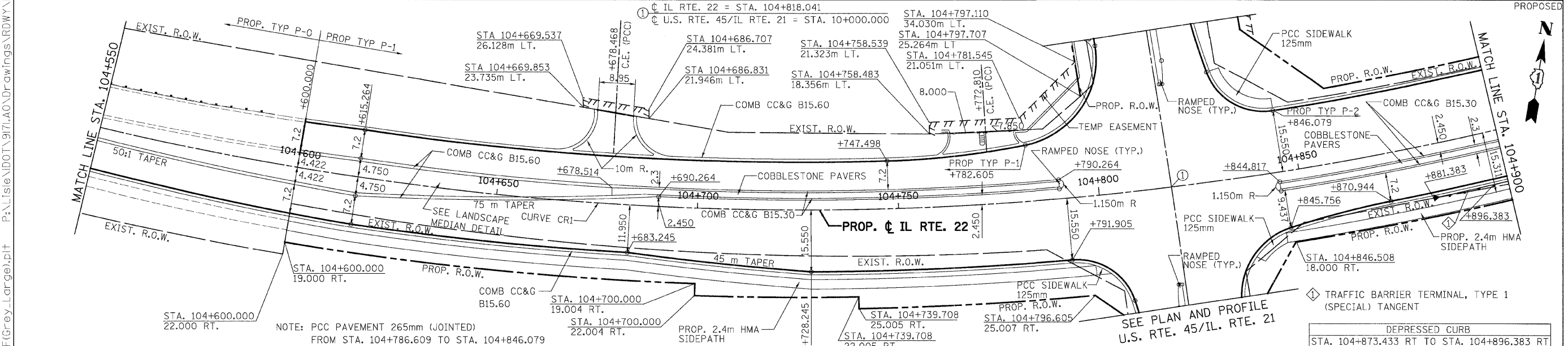
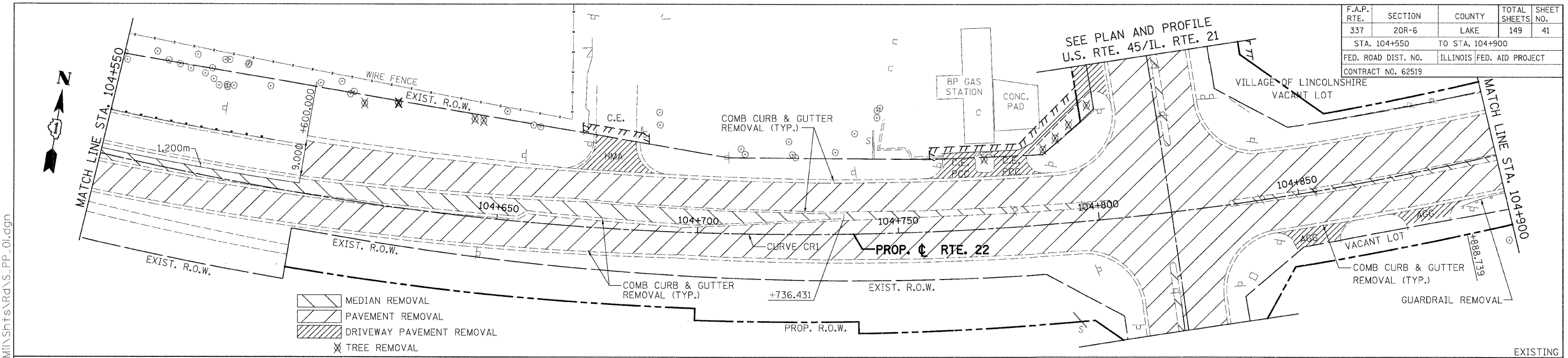


F.A.P. RTE.	SECTION	COUNTY	TOTAL SHEETS	SHEET NO.
337	20R-6	LAKE	149	41
STA. 104+550		TO STA. 104+900		
FED. ROAD DIST. NO.		ILLINOIS FED. AID PROJECT		
CONTRACT NO. 62519				



REVISIONS	
NAME	DATE

ILLINOIS DEPARTMENT OF TRANSPORTATION
 FAP ROUTE 337 (IL ROUTE 22)
 PLAN & PROFILE
 STA. 104+550 TO STA. 104+900
 SCALE: VERT. 1:50
 HORIZ. 1:500
 DATE: 1/28/2009
 DRAWN BY: TCK
 CHECKED BY: DTH

+koeppen(Rawy_Lisle)
 PATRICK ENGINEERING INC. LISLE, ILLINOIS
 2/5/2009 5:09:21 PM
 PDF(Grey_Large).plt P:\Lisle\DOT\971\AO\Drawings\RDWY\MIL\Shts\RD\NS_PP_01.dgn