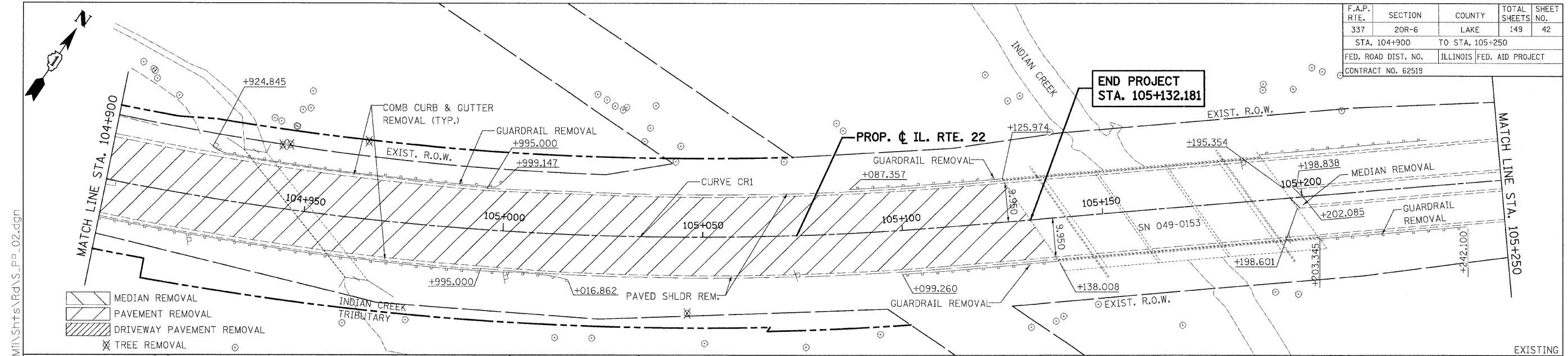
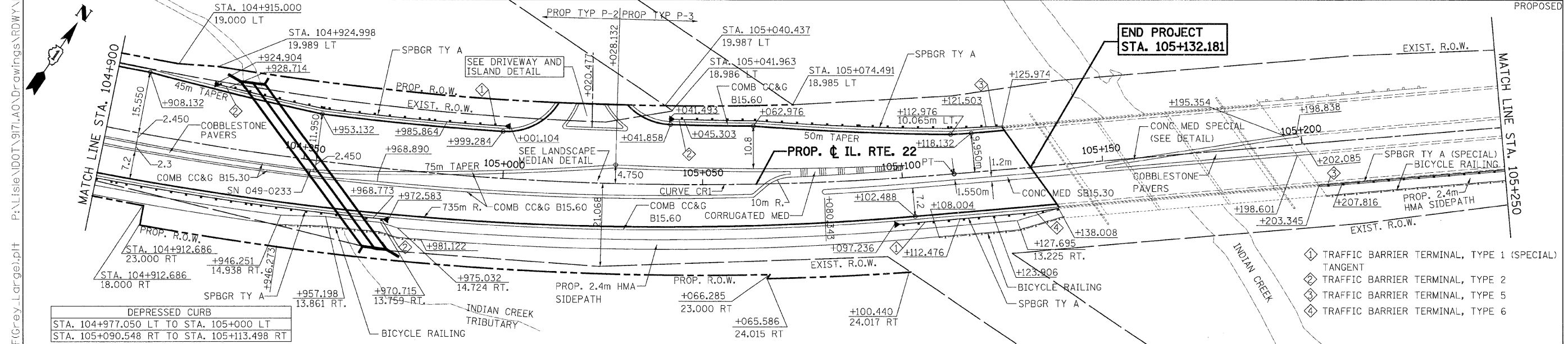


F.A.P. RTE.	SECTION	COUNTY	TOTAL SHEETS	SHEET NO.
337	20R-6	LAKE	149	42
STA. 104+900		TO STA. 105+250		
FED. ROAD DIST. NO.		ILLINOIS FED. AID PROJECT		
CONTRACT NO. 62519				

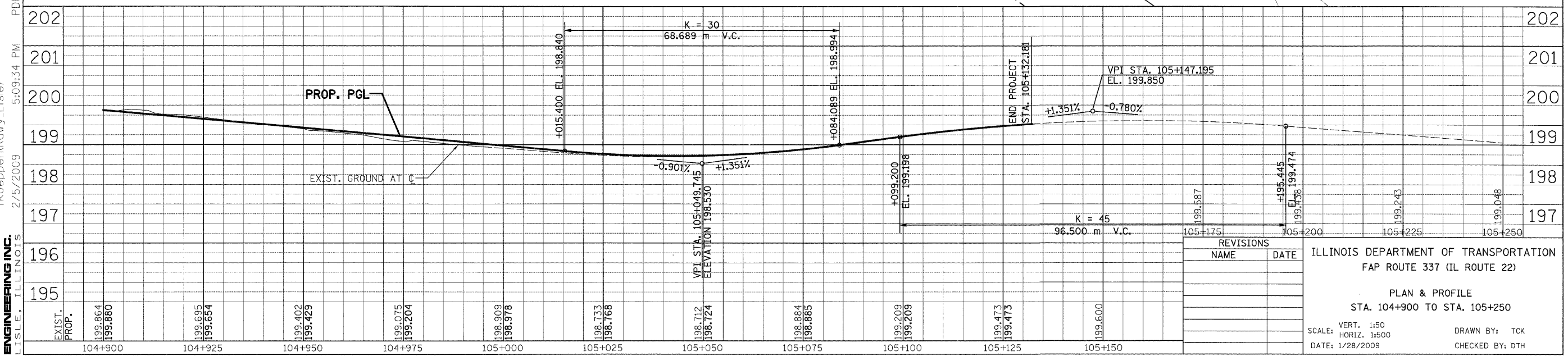


- MEDIAN REMOVAL
- PAVEMENT REMOVAL
- DRIVEWAY PAVEMENT REMOVAL
- TREE REMOVAL



DEPRESSED CURB
 STA. 104+977.050 LT TO STA. 105+000 LT
 STA. 105+090.548 RT TO STA. 105+113.498 RT

- TRAFFIC BARRIER TERMINAL, TYPE 1 (SPECIAL)
- TANGENT
- TRAFFIC BARRIER TERMINAL, TYPE 2
- TRAFFIC BARRIER TERMINAL, TYPE 5
- TRAFFIC BARRIER TERMINAL, TYPE 6



REVISIONS	
NAME	DATE

ILLINOIS DEPARTMENT OF TRANSPORTATION
 FAP ROUTE 337 (IL ROUTE 22)

PLAN & PROFILE
 STA. 104+900 TO STA. 105+250

SCALE: VERT. 1:50
 HORIZ. 1:500
 DATE: 1/28/2009

DRAWN BY: TCK
 CHECKED BY: DTH

PATRICK ENGINEERING INC. LISTIE, ILLINOIS
 +koeppen(Rdwy_Listie)
 2/5/2009 5:09:34 PM PDF(Grey_Large).plt P:\Listie\DOT\9171\AO\Drawings\RDWY\MIShts\RDNS_P_02.dgn