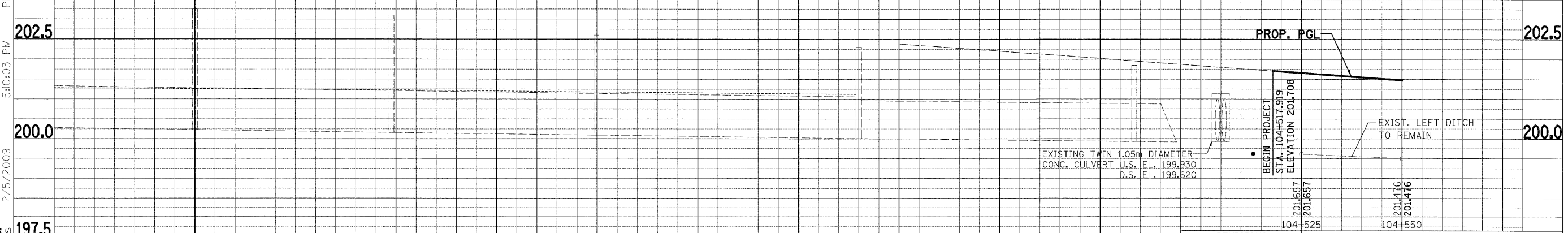
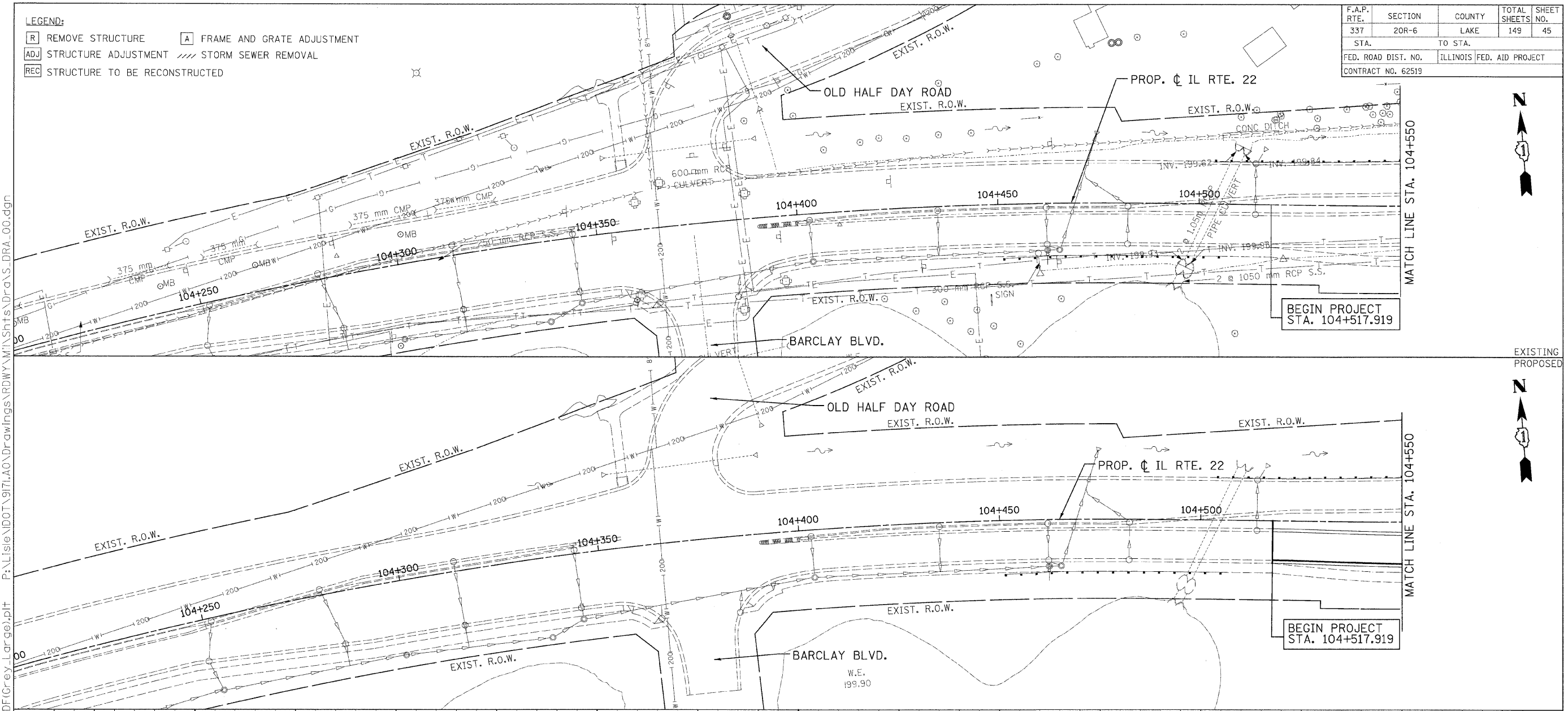


LEGEND:
 [R] REMOVE STRUCTURE [A] FRAME AND GRATE ADJUSTMENT
 [ADJ] STRUCTURE ADJUSTMENT [---] STORM SEWER REMOVAL
 [REC] STRUCTURE TO BE RECONSTRUCTED

F.A.P. RTE.	SECTION	COUNTY	TOTAL SHEETS	SHEET NO.
337	20R-6	LAKE	149	45
STA.	TO STA.			
FED. ROAD DIST. NO.	ILLINOIS FED. AID PROJECT			
CONTRACT NO. 62519				

P:\Lisie\DOT\971\AO\Drawings\RDWY\W\Shots\Draws\DR_00.dgn
 PDF(Grey, Large).plt
 P:\Lisie\DOT\971\AO\Drawings\RDWY\W\Shots\Draws\DR_00.dgn
 5:10:03 PM
 2/5/2009
 +koeppen(Rdwy_Lisie)



REVISIONS	
NAME	DATE

ILLINOIS DEPARTMENT OF TRANSPORTATION
 FAP ROUTE 337 (IL ROUTE 22)
 DRAINAGE & UTILITIES
 STA. 104+517.919 TO STA. 104+550
 VERT. 1:50
 SCALE: HORIZ. 1:500
 DATE: 1/28/2009
 DRAWN BY: TCK
 CHECKED BY: DTH