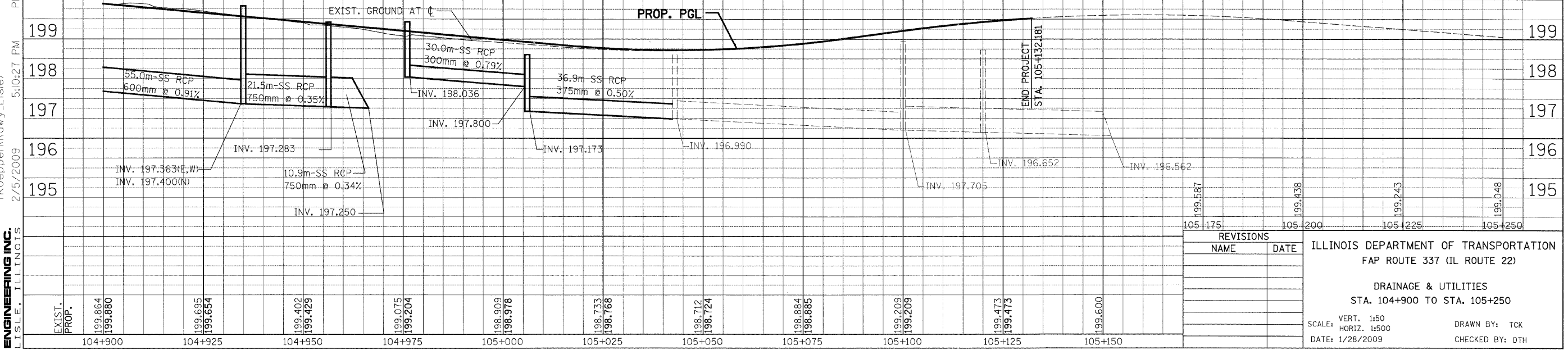
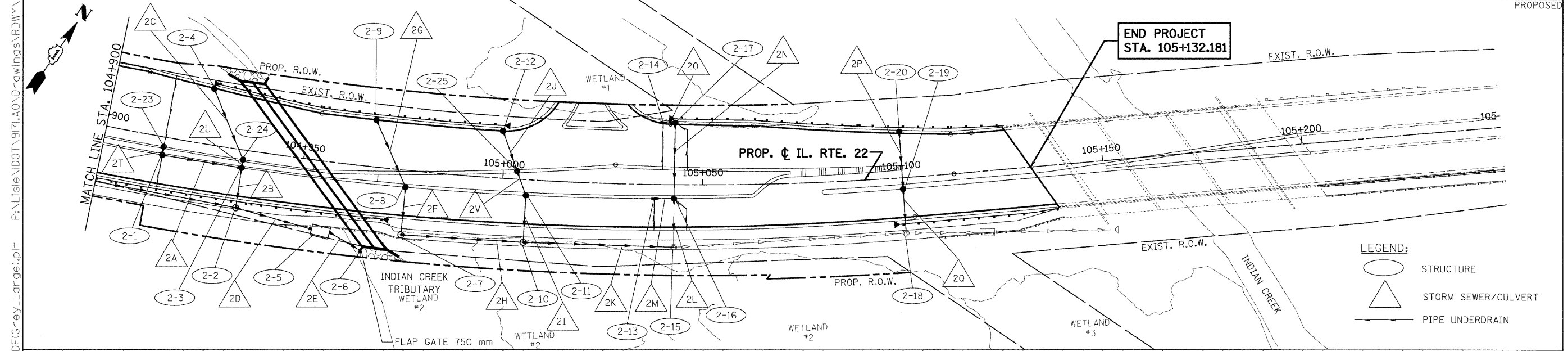
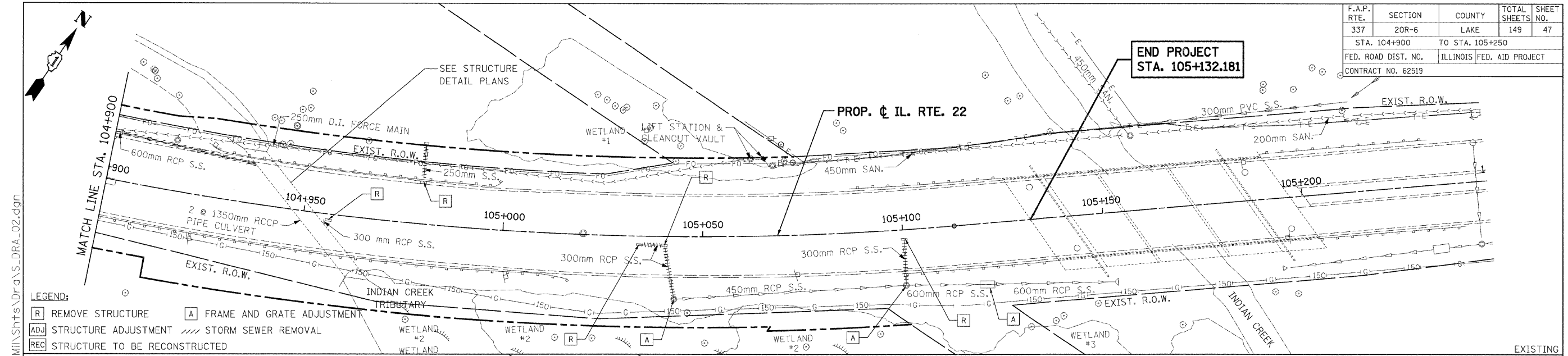


F.A.P. RTE.	SECTION	COUNTY	TOTAL SHEETS	SHEET NO.
337	20R-6	LAKE	149	47
STA. 104+900		TO STA. 105+250		
FED. ROAD DIST. NO.		ILLINOIS FED. AID PROJECT		
CONTRACT NO. 62519				



Patrick Engineering Inc. logo and contact information.

REVISIONS	
NAME	DATE

ILLINOIS DEPARTMENT OF TRANSPORTATION  
FAP ROUTE 337 (IL ROUTE 22)  
DRAINAGE & UTILITIES  
STA. 104+900 TO STA. 105+250  
SCALE: VERT. 1:50 HORIZ. 1:500  
DATE: 1/28/2009  
DRAWN BY: TCK  
CHECKED BY: DTH